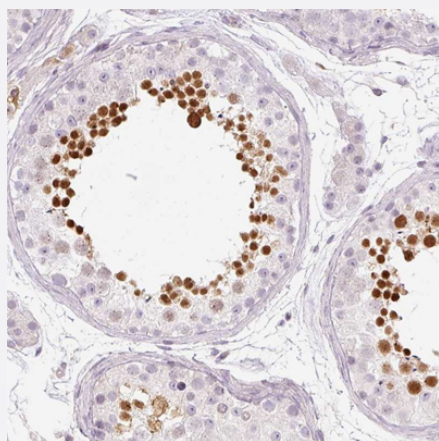


KPNA5 polyclonal antibody

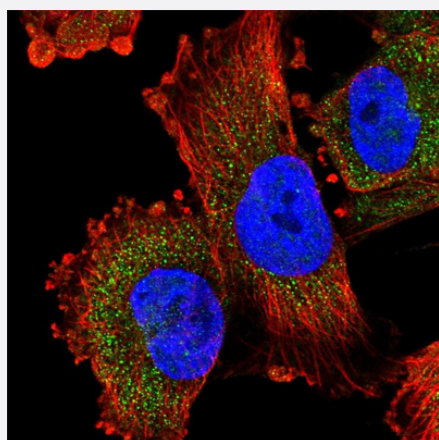
Catalog # PAB29455 Size 100 uL

Applications



Immunohistochemistry (Formalin/PFA-fixed paraffin-embedded sections)

Immunohistochemical staining of human testis with KPNA5 polyclonal antibody (Cat # PAB29455) shows strong nuclear positivity in cells in seminiferous ducts.



Immunofluorescence

Immunofluorescent staining of human cell line U-251 MG with KPNA5 polyclonal antibody (Cat # PAB29455) at 1-4 ug/mL concentration shows positivity in cytoplasm.

Specification

Product Description	Rabbit polyclonal antibody raised against recombinant human KPNA5.
Immunogen	Recombinant protein corresponding to human KPNA5.
Sequence	KRRNVYLPRNDESMLESPIQDPDISSTVPIEEVVTTDMVQMIFSNNADQQLTATQK
Host	Rabbit

Reactivity	Human
Form	Liquid
Purification	Antigen affinity purification
Isotype	IgG
Recommend Usage	Immunohistochemistry (1:200-1:500) Immunofluorescence (1-4 ug/mL) The optimal working dilution should be determined by the end user.
Storage Buffer	In PBS, pH 7.2 (40% glycerol, 0.02% sodium azide)
Storage Instruction	Store at 4°C. For long term storage store at -20°C. Aliquot to avoid repeated freezing and thawing.
Note	This product contains sodium azide: a POISONOUS AND HAZARDOUS SUBSTANCE which should be handled by trained staff only.

Applications

- Immunohistochemistry (Formalin/PFA-fixed paraffin-embedded sections)

Immunohistochemical staining of human testis with KPNA5 polyclonal antibody (Cat # PAB29455) shows strong nuclear positivity in cells in seminiferous ducts.

- Immunofluorescence

Immunofluorescent staining of human cell line U-251 MG with KPNA5 polyclonal antibody (Cat # PAB29455) at 1-4 ug/mL concentration shows positivity in cytoplasm.

Gene Info — KPNA5

Entrez GeneID	3841
Gene Name	KPNA5
Gene Alias	IPOA6, SRP6
Gene Description	karyopherin alpha 5 (importin alpha 6)
Omim ID	604545
Gene Ontology	Hyperlink

Gene Summary

The transport of molecules between the nucleus and the cytoplasm in eukaryotic cells is mediated by the nuclear pore complex (NPC) which consists of 60-100 proteins and is probably 120 million daltons in molecular size. Small molecules (up to 70 kD) can pass through the nuclear pore by non selective diffusion; larger molecules are transported by an active process. Most nuclear proteins contain short basic amino acid sequences known as nuclear localization signals (NLSs). KPNA5 protein belongs to the importin alpha protein family and is thought to be involved in NLS-dependent protein import into the nucleus. [provided by RefSeq]

Other Designations

OTTHUMP00000017076|importin alpha 6|karyopherin alpha 5