

CMPK1 polyclonal antibody

Catalog # PAB29453

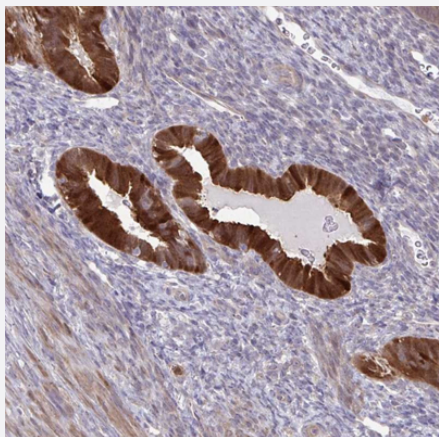
Size 100 uL

Applications



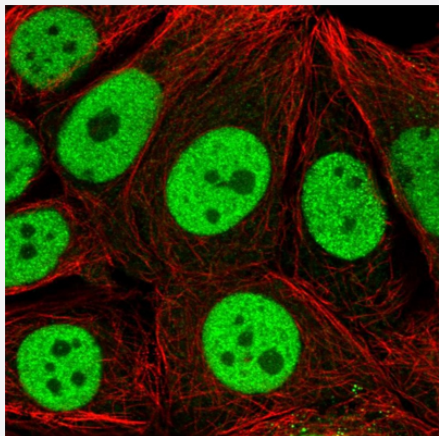
Western Blot (Cell lysate)

Western blot analysis of Lane 1: Human cell line RT-4 Lane 2: Human cell line U-251MG sp Lane 3: Human plasma (IgG/HSA depleted) Lane 4: Human liver tissue with CMPK1 polyclonal antibody (Cat # PAB29453) at 1:100-1:250 dilution.



Immunohistochemistry (Formalin/PFA-fixed paraffin-embedded sections)

Immunohistochemical staining of human uterus with CMPK1 polyclonal antibody (Cat # PAB29453) shows strong cytoplasmic positivity in glandular cells at 1:50-1:200 dilution.



Immunofluorescence

Immunofluorescent staining of human cell line MCF7 with CMPK1 polyclonal antibody (Cat # PAB29453) at 1-4 ug/mL concentration shows positivity in nucleus but excluded from the nucleoli.

Specification

Product Description	Rabbit polyclonal antibody raised against recombinant human CMPK1.
Immunogen	Recombinant protein corresponding to human CMPK1.
Sequence	NLQGWNKTMDGKADVSVLFFDCNNEICIERCLERGKSSGRSDDNRESLEKRIQTYLQSTKPIIDL YEEMGKVKK
Host	Rabbit
Reactivity	Human
Form	Liquid
Purification	Antigen affinity purification
Isotype	IgG
Recommend Usage	Immunohistochemistry (1:50-1:200) Immunofluorescence (1-4 ug/mL) Western Blot (1:100-1:250) The optimal working dilution should be determined by the end user.
Storage Buffer	In PBS, pH 7.2 (40% glycerol, 0.02% sodium azide)
Storage Instruction	Store at 4°C. For long term storage store at -20°C. Aliquot to avoid repeated freezing and thawing.
Note	This product contains sodium azide: a POISONOUS AND HAZARDOUS SUBSTANCE which should be handled by trained staff only.

Applications

- Western Blot (Cell lysate)

Western blot analysis of Lane 1: Human cell line RT-4 Lane 2: Human cell line U-251MG sp Lane 3: Human plasma (IgG/HSA depleted) Lane 4: Human liver tissue with CMPK1 polyclonal antibody (Cat # PAB29453) at 1:100-1:250 dilution.

- Immunohistochemistry (Formalin/PFA-fixed paraffin-embedded sections)

Immunohistochemical staining of human uterus with CMPK1 polyclonal antibody (Cat # PAB29453) shows strong cytoplasmic positivity in glandular cells at 1:50-1:200 dilution.

- Immunofluorescence

Immunofluorescent staining of human cell line MCF7 with CMPK1 polyclonal antibody (Cat # PAB29453) at 1-4 ug/mL concentration shows positivity in nucleus but excluded from the nucleoli.

Gene Info — CMPK1

Entrez GeneID [51727](#)**Gene Name** CMPK1**Gene Alias** CMK, CMPK, UMK, UMP-CMPK, UMPK**Gene Description** cytidine monophosphate (UMP-CMP) kinase 1, cytosolic**Omim ID** [191710](#)**Gene Ontology** [Hyperlink](#)

Gene Summary Uridine monophosphate (UMP)/cytidine monophosphate (CMP) kinase (EC 2.7.4.4) catalyzes the phosphoryl transfer from ATP to UMP, CMP, and deoxy-CMP (dCMP), resulting in the formation of ADP and the corresponding nucleoside diphosphate. These nucleoside diphosphates are required for cellular nucleic acid synthesis (Liou et al., 2002 [PubMed 11912132]).[supplied by OMIM]

Other Designations Cytidine monophosphate kinase|OTTHUMP00000009565|UMP-CMP kinase|cytidylate kinase

Pathway

- [Metabolic pathways](#)
- [Pyrimidine metabolism](#)