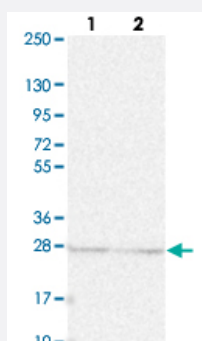


KPNA1 polyclonal antibody

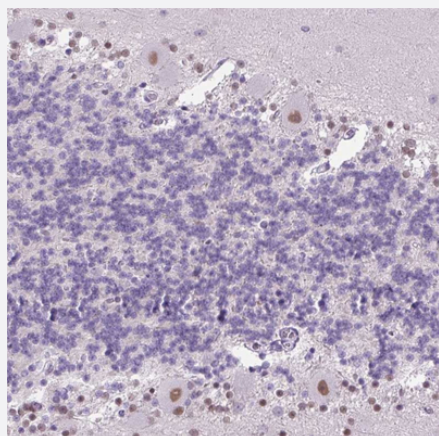
Catalog # PAB29452 Size 100 uL

Applications



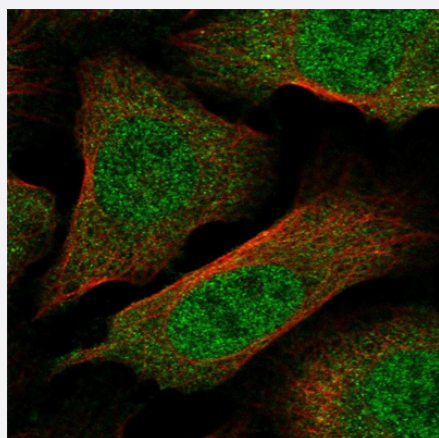
Western Blot (Cell lysate)

Western blot analysis of Lane 1: Human cell line RT-4 Lane 2: Human cell line U-251MG sp with KPNA1 polyclonal antibody (Cat # PAB29452) at 1:250-1:500 dilution.



Immunohistochemistry (Formalin/PFA-fixed paraffin-embedded sections)

Immunohistochemical staining of human cerebellum with KPNA1 polyclonal antibody (Cat # PAB29452) shows moderate nuclear positivity in Purkinje cells at 1:500-1:1000 dilution.



Immunofluorescence

Immunofluorescent staining of human cell line U-2 OS with KPNA1 polyclonal antibody (Cat # PAB29452) at 1-4 ug/mL concentration shows positivity in cytoplasm and nucleus but excluded from the nucleoli.

Specification

Product Description	Rabbit polyclonal antibody raised against recombinant human KPNA1.
Immunogen	Recombinant protein corresponding to human KPNA1.
Sequence	MEMAPGGVITSDMIEMIFSKSPEQQLSATQK
Host	Rabbit
Reactivity	Human
Form	Liquid
Purification	Antigen affinity purification
Isotype	IgG
Recommend Usage	Immunohistochemistry (1:500-1:1000) Immunofluorescence (1-4 ug/mL) Western Blot (1:250-1:500) The optimal working dilution should be determined by the end user.
Storage Buffer	In PBS, pH 7.2 (40% glycerol, 0.02% sodium azide)
Storage Instruction	Store at 4°C. For long term storage store at -20°C. Aliquot to avoid repeated freezing and thawing.
Note	This product contains sodium azide: a POISONOUS AND HAZARDOUS SUBSTANCE which should be handled by trained staff only.

Applications

- Western Blot (Cell lysate)

Western blot analysis of Lane 1: Human cell line RT-4 Lane 2: Human cell line U-251MG sp with KPNA1 polyclonal antibody (Cat # PAB29452) at 1:250-1:500 dilution.

- Immunohistochemistry (Formalin/PFA-fixed paraffin-embedded sections)

Immunohistochemical staining of human cerebellum with KPNA1 polyclonal antibody (Cat # PAB29452) shows moderate nuclear positivity in Purkinje cells at 1:500-1:1000 dilution.

- Immunofluorescence

Immunofluorescent staining of human cell line U-2 OS with KPNA1 polyclonal antibody (Cat # PAB29452) at 1-4 ug/mL concentration shows positivity in cytoplasm and nucleus but excluded from the nucleoli.

Gene Info — KPNA1

Entrez GeneID [3836](#)**Gene Name** KPNA1**Gene Alias** IPOA5, NPI-1, RCH2, SRP1**Gene Description** karyopherin alpha 1 (importin alpha 5)**Omim ID** [600686](#)**Gene Ontology** [Hyperlink](#)

Gene Summary

Recombination activating proteins RAG1 and RAG2 regulate and mediate V(D)J recombination, the process by which genes for immunoglobulins and T-cell receptors are generated. Several other ubiquitously expressed proteins are thought to be recruited in the recombination process. Among these are the genes affected in severe combined immune deficiency and genes involved in ds-DNA break repair. The protein encoded by this gene interacts with RAG1 and may play a role in V(D)J recombination. Two transcript variants, one protein-coding and the other not, have been found for this gene. [provided by RefSeq]

Other Designations importin alpha 5|importin-alpha-S1|karyopherin alpha 1|nucleoprotein interactor 1|recombination activating gene cohort 2