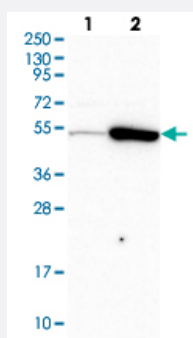


TRIP6 polyclonal antibody

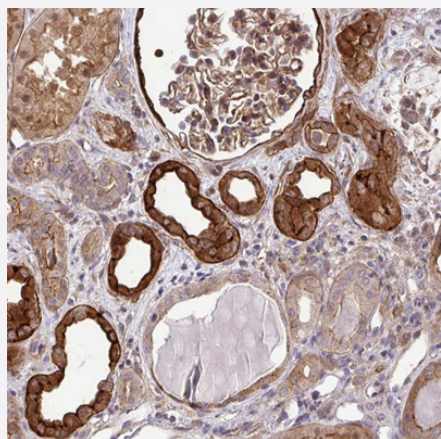
Catalog # PAB29450 Size 100 uL

Applications



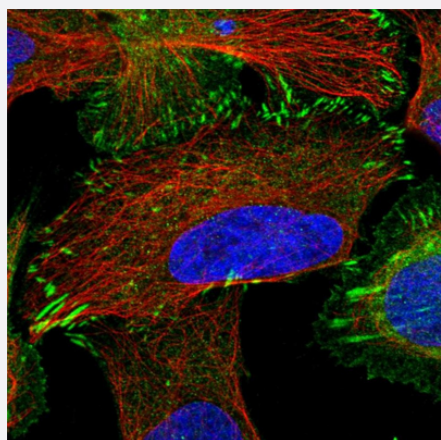
Western Blot (Cell lysate)

Western blot analysis of Lane 1: Human cell line RT-4 Lane 2: Human cell line U-251MG sp with TRIP6 polyclonal antibody (Cat # PAB29450) at 1:500-1:1000 dilution.



Immunohistochemistry (Formalin/PFA-fixed paraffin-embedded sections)

Immunohistochemical staining of human kidney with TRIP6 polyclonal antibody (Cat # PAB29450) shows strong cytoplasmic and membranous positivity in cells in tubules and cells in glomeruli at 1:50-1:200 dilution.



Immunofluorescence

Immunofluorescent staining of human cell line U-2 OS with TRIP6 polyclonal antibody (Cat # PAB29450) at 1-4 ug/mL concentration shows positivity in plasma membrane, cytoplasm and focal adhesion sites.

Specification

Product Description	Rabbit polyclonal antibody raised against recombinant human TRIP6.
Immunogen	Recombinant protein corresponding to human TRIP6.
Sequence	RPGSLDAEIDLLSSTLAELNGGRGHASRRPDRQAYEPPPPPAYRTGSLKPNPASP
Host	Rabbit
Reactivity	Human
Form	Liquid
Purification	Antigen affinity purification
Isotype	IgG
Recommend Usage	Immunohistochemistry (1:50-1:200) Immunofluorescence (1-4 ug/mL) Western Blot (1:500-1:1000) The optimal working dilution should be determined by the end user.
Storage Buffer	In PBS, pH 7.2 (40% glycerol, 0.02% sodium azide)
Storage Instruction	Store at 4°C. For long term storage store at -20°C. Aliquot to avoid repeated freezing and thawing.
Note	This product contains sodium azide: a POISONOUS AND HAZARDOUS SUBSTANCE which should be handled by trained staff only.

Applications

- Western Blot (Cell lysate)

Western blot analysis of Lane 1: Human cell line RT-4 Lane 2: Human cell line U-251MG sp with TRIP6 polyclonal antibody (Cat # PAB29450) at 1:500-1:1000 dilution.

- Immunohistochemistry (Formalin/PFA-fixed paraffin-embedded sections)

Immunohistochemical staining of human kidney with TRIP6 polyclonal antibody (Cat # PAB29450) shows strong cytoplasmic and membranous positivity in cells in tubules and cells in glomeruli at 1:50-1:200 dilution.

- Immunofluorescence

Immunofluorescent staining of human cell line U-2 OS with TRIP6 polyclonal antibody (Cat # PAB29450) at 1-4 ug/mL concentration shows positivity in plasma membrane, cytoplasm and focal adhesion sites.

Gene Info — TRIP6

Entrez GeneID [7205](#)**Gene Name** TRIP6**Gene Alias** MGC10556, MGC10558, MGC29959, MGC3837, MGC4423, OIP1, ZRP-1**Gene Description** thyroid hormone receptor interactor 6**Omim ID** [602933](#)**Gene Ontology** [Hyperlink](#)

Gene Summary This gene is a member of the zyxin family and encodes a protein with three LIM zinc-binding domains. This protein localizes to focal adhesion sites and along actin stress fibers. Recruitment of this protein to the plasma membrane occurs in a lysophosphatidic acid (LPA)-dependent manner and it regulates LPA-induced cell migration. Alternatively spliced variants which encode different protein isoforms have been described; however, not all variants have been fully characterized. [provided by RefSeq]

Other Designations OPA-interacting protein 1|thyroid receptor-interacting protein 6|zyxin related protein 1