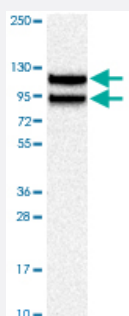


LIMA1 polyclonal antibody

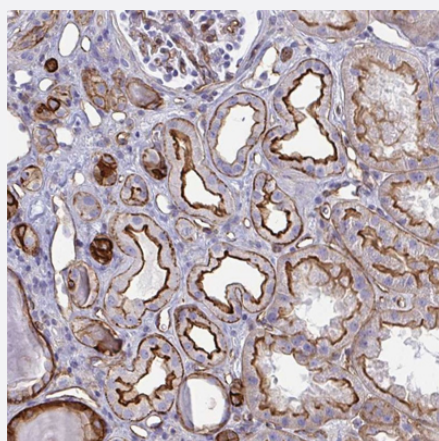
Catalog # PAB29449 Size 100 uL

Applications



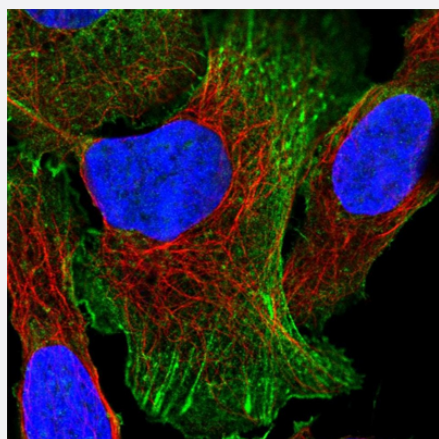
Western Blot (Cell lysate)

Western blot analysis of Human cell line RT-4 with LIMA1 polyclonal antibody (Cat # PAB29449) at 1:250-1:500 dilution.



Immunohistochemistry (Formalin/PFA-fixed paraffin-embedded sections)

Immunohistochemical staining of human kidney with LIMA1 polyclonal antibody (Cat # PAB29449) shows strong membranous positivity in cells in tubules at 1:500-1:1000 dilution.



Immunofluorescence

Immunofluorescent staining of human cell line U-2 OS with LIMA1 polyclonal antibody (Cat # PAB29449) at 1-4 ug/mL concentration shows positivity in plasma membrane, actin filaments and focal adhesion sites.

Specification

Product Description	Rabbit polyclonal antibody raised against recombinant human LIMA1.
Immunogen	Recombinant protein corresponding to human LIMA1.
Sequence	RPHKDLWASKNENEEILERPAQLANARETPHSPGVEDAPIAKVGVLAASMEAKASSQQEKEDKP AETKKLRIAWPPPTELGSSGSALEEGI
Host	Rabbit
Reactivity	Human
Form	Liquid
Purification	Antigen affinity purification
Isotype	IgG
Recommend Usage	Immunohistochemistry (1:500-1:1000) Immunofluorescence (1-4 ug/mL) Western Blot (1:250-1:500) The optimal working dilution should be determined by the end user.
Storage Buffer	In PBS, pH 7.2 (40% glycerol, 0.02% sodium azide)
Storage Instruction	Store at 4°C. For long term storage store at -20°C. Aliquot to avoid repeated freezing and thawing.
Note	This product contains sodium azide: a POISONOUS AND HAZARDOUS SUBSTANCE which should be handled by trained staff only.

Applications

- Western Blot (Cell lysate)

Western blot analysis of Human cell line RT-4 with LIMA1 polyclonal antibody (Cat # PAB29449) at 1:250-1:500 dilution.

- Immunohistochemistry (Formalin/PFA-fixed paraffin-embedded sections)

Immunohistochemical staining of human kidney with LIMA1 polyclonal antibody (Cat # PAB29449) shows strong membranous positivity in cells in tubules at 1:500-1:1000 dilution.

- Immunofluorescence

Immunofluorescent staining of human cell line U-2 OS with LIMA1 polyclonal antibody (Cat # PAB29449) at 1-4 ug/mL concentration shows positivity in plasma membrane, actin filaments and focal adhesion sites.

Gene Info — LIMA1

Entrez GeneID	51474
Gene Name	LIMA1
Gene Alias	EPLIN, FLJ38853, MGC131726, SREBP3
Gene Description	LIM domain and actin binding 1
Omim ID	608364
Gene Ontology	Hyperlink
Gene Summary	EPLIN is a cytoskeleton-associated protein that inhibits actin filament depolymerization and cross-links filaments in bundles (Maul et al., 2003 [PubMed 12566430]).[supplied by OMIM]
Other Designations	1110021C24Rik epithelial protein lost in neoplasm beta sterol regulatory element binding protein 3