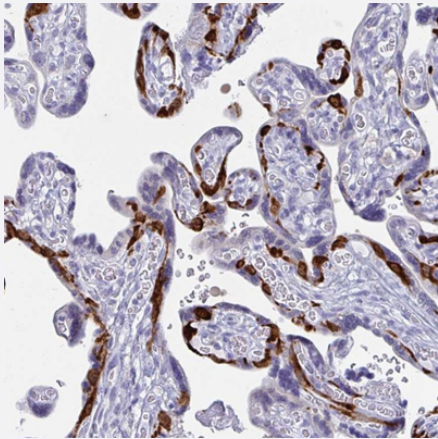


# PEG10 polyclonal antibody

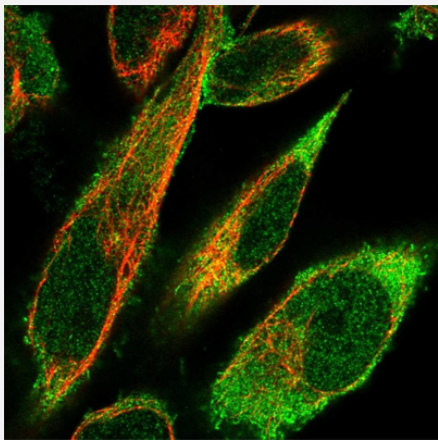
Catalog # PAB29434      Size 100 uL

## Applications



### Immunohistochemistry (Formalin/PFA-fixed paraffin-embedded sections)

Immunohistochemical staining of human placenta with PEG10 polyclonal antibody (Cat # PAB29434) shows strong cytoplasmic positivity in a subset of trophoblastic cells.



### Immunofluorescence

Immunofluorescent staining of human cell line RH-30 with PEG10 polyclonal antibody (Cat # PAB29434) at 1-4 ug/mL concentration shows positivity in cytoplasm.

## Specification

<b>Product Description</b>	Rabbit polyclonal antibody raised against recombinant human PEG10.
<b>Immunogen</b>	Recombinant protein corresponding to human PEG10.
<b>Sequence</b>	QCIHIERRLARAAAARKPRSPPRALVLPFIASHHQVDPTEPVGGARMRLTQEEKERRRKLNLCLY CGTGGHYADNCPAKASKSS

Host	Rabbit
Reactivity	Human
Form	Liquid
Purification	Antigen affinity purification
Isotype	IgG
Recommend Usage	Immunohistochemistry (1:500-1:1000) Immunofluorescence (1-4 ug/mL) The optimal working dilution should be determined by the end user.
Storage Buffer	In PBS, pH 7.2 (40% glycerol, 0.02% sodium azide)
Storage Instruction	Store at 4°C. For long term storage store at -20°C. Aliquot to avoid repeated freezing and thawing.
Note	This product contains sodium azide: a POISONOUS AND HAZARDOUS SUBSTANCE which should be handled by trained staff only.

## Applications

- Immunohistochemistry (Formalin/PFA-fixed paraffin-embedded sections)

Immunohistochemical staining of human placenta with PEG10 polyclonal antibody (Cat # PAB29434) shows strong cytoplasmic positivity in a subset of trophoblastic cells.

- Immunofluorescence

Immunofluorescent staining of human cell line RH-30 with PEG10 polyclonal antibody (Cat # PAB29434) at 1-4 ug/mL concentration shows positivity in cytoplasm.

## Gene Info — PEG10

Entrez GeneID	<a href="#">23089</a>
Gene Name	PEG10
Gene Alias	Edr, HB-1, KIAA1051, MEF3L, Mar2, Mart2, RGAG3
Gene Description	paternally expressed 10
Omim ID	<a href="#">609810</a>
Gene Ontology	<a href="#">Hyperlink</a>

**Gene Summary**

This gene includes two overlapping reading frames of the same transcript encoding distinct isoforms. The shorter isoform has a CCHC-type zinc finger motif containing a sequence characteristic of gag proteins of most retroviruses and some retrotransposons, and it functions in part by interacting with members of the TGF-beta receptor family. The longer isoform has the active-site DSG consensus sequence of the protease domain of pol proteins. The longer isoform is the result of -1 translational frameshifting that is also seen in some retroviruses. Expression of these two isoforms only comes from the paternal allele due to imprinting. Increased gene expression (as observed by an increase in mRNA levels) is associated with hepatocellular carcinomas. [provided by RefSeq]

**Other Designations**

MEF3 like 1|embryonal carcinoma differentiation regulated|retrotransposon gag domain containing 3