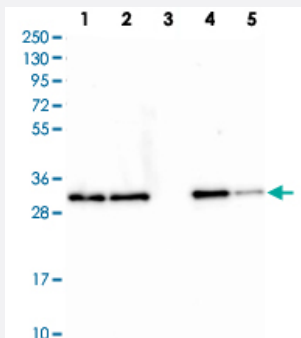


CLTA polyclonal antibody

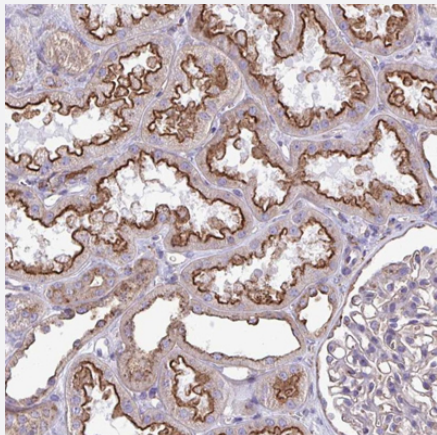
Catalog # PAB29433 Size 100 uL

Applications



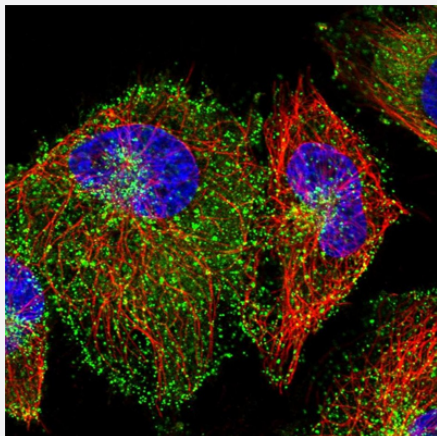
Western Blot (Cell lysate)

Western blot analysis of Lane 1: Human cell line RT-4 Lane 2: Human cell line U-251MG Lane 3: Human plasma Lane 4: Human liver tissue Lane 5: Human tonsil tissue with CLTA polyclonal antibody (Cat # PAB29433) at 1:250-1:500 dilution.



Immunohistochemistry (Formalin/PFA-fixed paraffin-embedded sections)

Immunohistochemical staining of human kidney with CLTA polyclonal antibody (Cat # PAB29433) shows strong membranous positivity in cells in tubules at 1:2500-1:5000 dilution.



Immunofluorescence

Immunofluorescent staining of human cell line U-251 MG with CLTA polyclonal antibody (Cat # PAB29433) at 1-4 ug/mL concentration shows positivity in vesicles.

Specification

Product Description	Rabbit polyclonal antibody raised against recombinant human CLTA.
Immunogen	Recombinant protein corresponding to human CLTA.
Sequence	NDEAFAILDGGAPGPQPHGEPPGGPDAVDGVMNGEYYQESNGPTDSYAAISQVDRQLQSEPE
Host	Rabbit
Reactivity	Human
Form	Liquid
Purification	Antigen affinity purification
Isotype	IgG
Recommend Usage	Immunohistochemistry (1:2500-1:5000) Immunofluorescence (1-4 ug/mL) Western Blot (1:250-1:500) The optimal working dilution should be determined by the end user.
Storage Buffer	In PBS, pH 7.2 (40% glycerol, 0.02% sodium azide)
Storage Instruction	Store at 4°C. For long term storage store at -20°C. Aliquot to avoid repeated freezing and thawing.
Note	This product contains sodium azide: a POISONOUS AND HAZARDOUS SUBSTANCE which should be handled by trained staff only.

Applications

- Western Blot (Cell lysate)

Western blot analysis of Lane 1: Human cell line RT-4 Lane 2: Human cell line U-251MG Lane 3: Human plasma Lane 4: Human liver tissue Lane 5: Human tonsil tissue with CLTA polyclonal antibody (Cat # PAB29433) at 1:250-1:500 dilution.

- Immunohistochemistry (Formalin/PFA-fixed paraffin-embedded sections)

Immunohistochemical staining of human kidney with CLTA polyclonal antibody (Cat # PAB29433) shows strong membranous positivity in cells in tubules at 1:2500-1:5000 dilution.

- Immunofluorescence

Immunofluorescent staining of human cell line U-251 MG with CLTA polyclonal antibody (Cat # PAB29433) at 1-4 ug/mL concentration shows positivity in vesicles.

Gene Info — CLTA

Entrez GeneID	1211
Gene Name	CLTA
Gene Alias	LCA
Gene Description	clathrin, light chain (Lca)
Omim ID	118960
Gene Ontology	Hyperlink
Gene Summary	Clathrin is a large, soluble protein composed of heavy and light chains. It functions as the main structural component of the lattice-type cytoplasmic face of coated pits and vesicles which entrap specific macromolecules during receptor-mediated endocytosis. This gene encodes one of two clathrin light chain proteins which are believed to function as regulatory elements. Alternative splicing results in multiple transcript variants. [provided by RefSeq]
Other Designations	OTTHUMP00000021365 OTTHUMP00000021366 clathrin, light polypeptide (Lca) clathrin, light polypeptide A

Pathway

- [Endocytosis](#)
- [Lysosome](#)

Disease

- [Cardiovascular Diseases](#)
- [Diabetes Mellitus](#)
- [Edema](#)