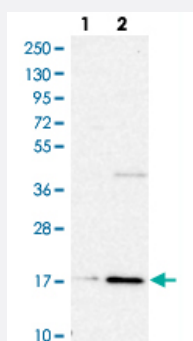


RPL28 polyclonal antibody

Catalog # PAB29428

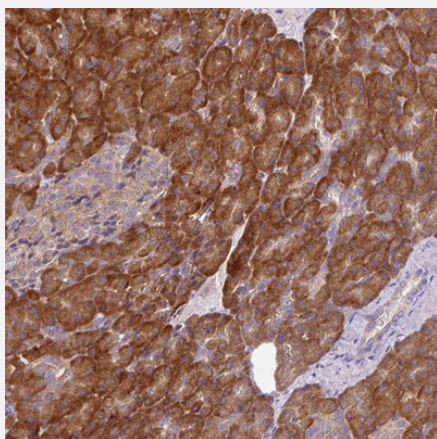
Size 100 uL

Applications



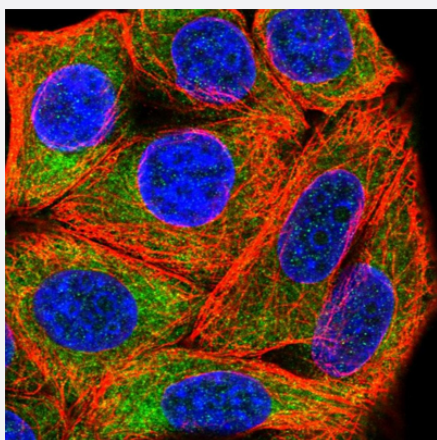
Western Blot (Cell lysate)

Western blot analysis of Lane 1: Human cell line RT-4 Lane 2: Human cell line U-251MG sp with RPL28 polyclonal antibody (Cat # PAB29428) at 1:500-1:1000 dilution.



Immunohistochemistry (Formalin/PFA-fixed paraffin-embedded sections)

Immunohistochemical staining of human pancreas with RPL28 polyclonal antibody (Cat # PAB29428) shows strong cytoplasmic positivity in exocrine glandular cells at 1:500-1:1000 dilution.



Immunofluorescence

Immunofluorescent staining of human cell line MCF7 with RPL28 polyclonal antibody (Cat # PAB29428) at 1-4 ug/mL concentration shows positivity in cytoplasm.

Specification

Product Description	Rabbit polyclonal antibody raised against recombinant human RPL28.
Immunogen	Recombinant protein corresponding to human RPL28.
Sequence	QRKPATSYVRTTINKNARATLSSIRHMIRKNKYRPDLRMAAIRRASAILRSQKPVMVKRKRT
Host	Rabbit
Reactivity	Human
Form	Liquid
Purification	Antigen affinity purification
Isotype	IgG
Recommend Usage	Immunohistochemistry (1:500-1:1000) Immunofluorescence (1-4 ug/mL) Western Blot (1:500-1:1000) The optimal working dilution should be determined by the end user.
Storage Buffer	In PBS, pH 7.2 (40% glycerol, 0.02% sodium azide)
Storage Instruction	Store at 4°C. For long term storage store at -20°C. Aliquot to avoid repeated freezing and thawing.
Note	This product contains sodium azide: a POISONOUS AND HAZARDOUS SUBSTANCE which should be handled by trained staff only.

Applications

- Western Blot (Cell lysate)

Western blot analysis of Lane 1: Human cell line RT-4 Lane 2: Human cell line U-251MG sp with RPL28 polyclonal antibody (Cat # PAB29428) at 1:500-1:1000 dilution.

- Immunohistochemistry (Formalin/PFA-fixed paraffin-embedded sections)

Immunohistochemical staining of human pancreas with RPL28 polyclonal antibody (Cat # PAB29428) shows strong cytoplasmic positivity in exocrine glandular cells at 1:500-1:1000 dilution.

- Immunofluorescence

Immunofluorescent staining of human cell line MCF7 with RPL28 polyclonal antibody (Cat # PAB29428) at 1-4 ug/mL concentration shows positivity in cytoplasm.

Gene Info — RPL28

Entrez GeneID [6158](#)**Gene Name** RPL28**Gene Alias** FLJ43307**Gene Description** ribosomal protein L28**Omim ID** [603638](#)**Gene Ontology** [Hyperlink](#)

Gene Summary

Ribosomes, the organelles that catalyze protein synthesis, consist of a small 40S subunit and a large 60S subunit. Together these subunits are composed of 4 RNA species and approximately 80 structurally distinct proteins. This gene encodes a ribosomal protein that is a component of the 60S subunit. The protein belongs to the L28E family of ribosomal proteins. It is located in the cytoplasm. Variable expression of this gene in colorectal cancers compared to adjacent normal tissues has been observed, although no correlation between the level of expression and the severity of the disease has been found. As is typical for genes encoding ribosomal proteins, there are multiple processed pseudogenes of this gene dispersed through the genome. Alternative splicing results in multiple transcript variants encoding distinct isoforms

Other Designations 60S ribosomal protein L28

Pathway

- [Ribosome](#)