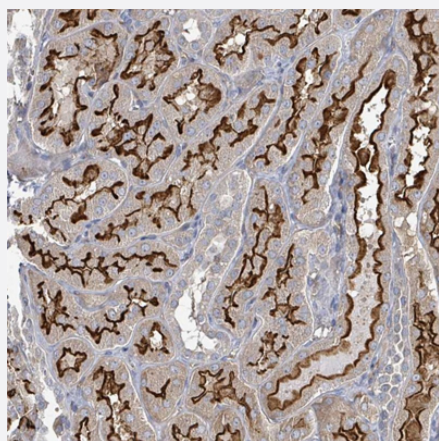


MDGA1 polyclonal antibody

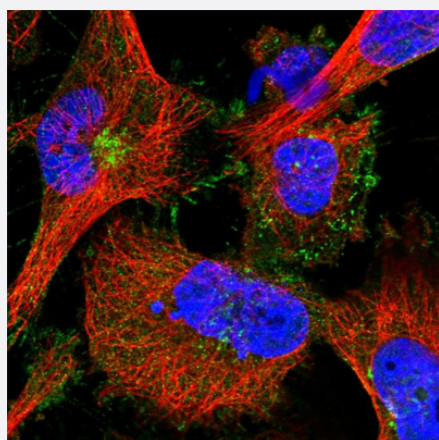
Catalog # PAB29426 Size 100 uL

Applications



Immunohistochemistry (Formalin/PFA-fixed paraffin-embedded sections)

Immunohistochemical staining of human kidney with MDGA1 polyclonal antibody (Cat # PAB29426) shows strong membranous positivity in cells in tubules.



Immunofluorescence

Immunofluorescent staining of human cell line U-251 MG with MDGA1 polyclonal antibody (Cat # PAB29426) at 1-4 ug/mL concentration shows positivity in plasma membrane and the Golgi apparatus.

Specification

Product Description	Rabbit polyclonal antibody raised against recombinant human MDGA1.
Immunogen	Recombinant protein corresponding to human MDGA1.
Sequence	EVEPSSQDVRQALGRPVLRLCSLLRGSPQRIASAVWRFKGQLPPPPVVPAAAEAPDHAELRLD AVTRDSSGSYECVSNVDVGSAA

Host	Rabbit
Reactivity	Human
Form	Liquid
Purification	Antigen affinity purification
Isotype	IgG
Recommend Usage	Immunohistochemistry (1:50-1:200) Immunofluorescence (1-4 ug/mL) The optimal working dilution should be determined by the end user.
Storage Buffer	In PBS, pH 7.2 (40% glycerol, 0.02% sodium azide)
Storage Instruction	Store at 4°C. For long term storage store at -20°C. Aliquot to avoid repeated freezing and thawing.
Note	This product contains sodium azide: a POISONOUS AND HAZARDOUS SUBSTANCE which should be handled by trained staff only.

Applications

- Immunohistochemistry (Formalin/PFA-fixed paraffin-embedded sections)

Immunohistochemical staining of human kidney with MDGA1 polyclonal antibody (Cat # PAB29426) shows strong membranous positivity in cells in tubules.

- Immunofluorescence

Immunofluorescent staining of human cell line U-251 MG with MDGA1 polyclonal antibody (Cat # PAB29426) at 1-4 ug/mL concentration shows positivity in plasma membrane and the Golgi apparatus.

Gene Info — MDGA1

Entrez GeneID	266727
Gene Name	MDGA1
Gene Alias	DKFZp686K0262, DKFZp686L0262, FLJ45018, GPIM, MAMDC3
Gene Description	MAM domain containing glycosylphosphatidylinositol anchor 1
Omim ID	609626
Gene Ontology	Hyperlink

Other Designationsglycosyl-phosphatidyl-inositol-MAM

Disease

- [Genetic Predisposition to Disease](#)
- [Schizophrenia](#)
- [Tobacco Use Disorder](#)