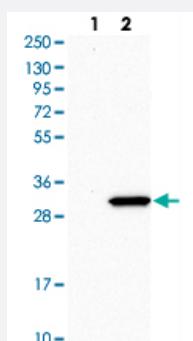


RPL8 polyclonal antibody

Catalog # PAB29424

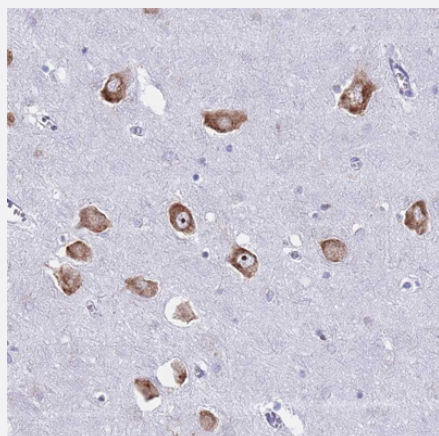
Size 100 uL

Applications



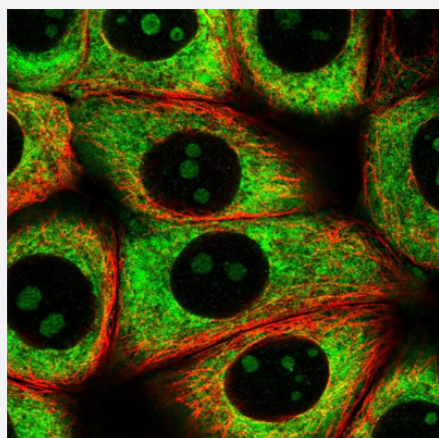
Western Blot (Cell lysate)

Western blot analysis of Lane 1: Human cell line RT-4 Lane 2: Human cell line U-251MG sp with RPL8 polyclonal antibody (Cat # PAB29424) at 1:500-1:1000 dilution.



Immunohistochemistry (Formalin/PFA-fixed paraffin-embedded sections)

Immunohistochemical staining of human hippocampus with RPL8 polyclonal antibody (Cat # PAB29424) shows strong cytoplasmic positivity in neuronal cells at 1:1000-1:2500 dilution.



Immunofluorescence

Immunofluorescent staining of human cell line MCF7 with RPL8 polyclonal antibody (Cat # PAB29424) at 1-4 ug/mL concentration shows positivity in nucleoli and cytoplasm.

Specification

Product Description	Rabbit polyclonal antibody raised against recombinant human RPL8.
Immunogen	Recombinant protein corresponding to human RPL8.
Sequence	VISSANRAVVGVVAGGGRIDKPILKAGRAYHKYKAKRNCWPRVRGVAMNPVEHPFGGGNHQHIG KPSTIRRDAPAGRKVGLIAARRTGRLRGTKTVQEK
Host	Rabbit
Reactivity	Human
Form	Liquid
Purification	Antigen affinity purification
Isotype	IgG
Recommend Usage	Immunohistochemistry (1:1000-1:2500) Immunofluorescence (1-4 ug/mL) Western Blot (1:500-1:1000) The optimal working dilution should be determined by the end user.
Storage Buffer	In PBS, pH 7.2 (40% glycerol, 0.02% sodium azide)
Storage Instruction	Store at 4°C. For long term storage store at -20°C. Aliquot to avoid repeated freezing and thawing.
Note	This product contains sodium azide: a POISONOUS AND HAZARDOUS SUBSTANCE which should be handled by trained staff only.

Applications

- Western Blot (Cell lysate)

Western blot analysis of Lane 1: Human cell line RT-4 Lane 2: Human cell line U-251MG sp with RPL8 polyclonal antibody (Cat # PAB29424) at 1:500-1:1000 dilution.

- Immunohistochemistry (Formalin/PFA-fixed paraffin-embedded sections)

Immunohistochemical staining of human hippocampus with RPL8 polyclonal antibody (Cat # PAB29424) shows strong cytoplasmic positivity in neuronal cells at 1:1000-1:2500 dilution.

- Immunofluorescence

Immunofluorescent staining of human cell line MCF7 with RPL8 polyclonal antibody (Cat # PAB29424) at 1-4 ug/mL concentration shows positivity in nucleoli and cytoplasm.

Gene Info — RPL8

Entrez GeneID [6132](#)

Gene Name RPL8

Gene Alias -

Gene Description ribosomal protein L8

Omim ID [604177](#)

Gene Ontology [Hyperlink](#)

Gene Summary

Ribosomes, the organelles that catalyze protein synthesis, consist of a small 40S subunit and a large 60S subunit. Together these subunits are composed of 4 RNA species and approximately 80 structurally distinct proteins. This gene encodes a ribosomal protein that is a component of the 60 S subunit. The protein belongs to the L2P family of ribosomal proteins. It is located in the cytoplasm. In rat, the protein associates with the 5.8S rRNA, very likely participates in the binding of amino acyl-tRNA, and is a constituent of the elongation factor 2-binding site at the ribosomal subunit interface. Alternatively spliced transcript variants encoding the same protein exist. As is typical for genes encoding ribosomal proteins, there are multiple processed pseudogenes of this gene dispersed through the genome. [provided by RefSeq]

Other Designations 60S ribosomal protein L8

Pathway

- [Ribosome](#)