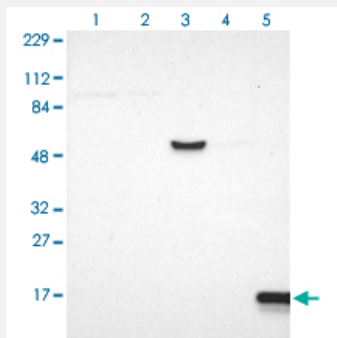


IFITM1 polyclonal antibody

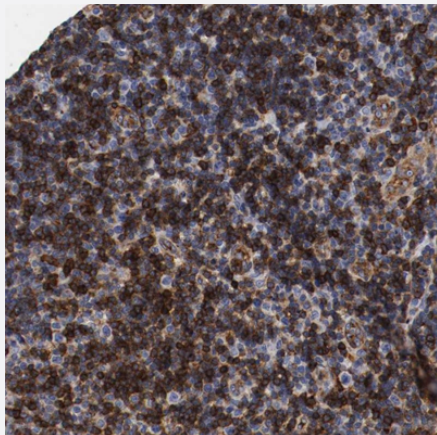
Catalog # PAB29413 Size 100 uL

Applications



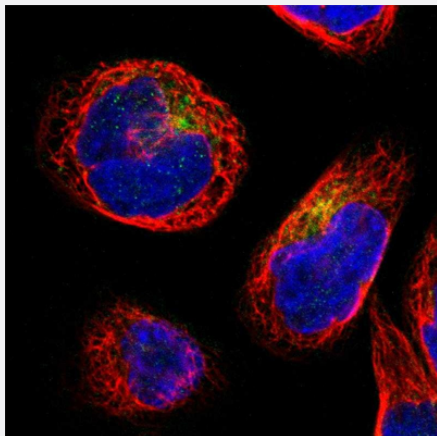
Western Blot (Cell lysate)

Western blot analysis of Lane 1: Human cell line RT-4 Lane 2: Human cell line U-251MG sp Lane 3: Human plasma (IgG/HSA depleted) Lane 4: Human liver tissue Lane 5: Human tonsil tissue with IFITM1 polyclonal antibody (Cat # PAB29413) at 1:100-1:250 dilution.



Immunohistochemistry (Formalin/PFA-fixed paraffin-embedded sections)

Immunohistochemical staining of human lymph node with IFITM1 polyclonal antibody (Cat # PAB29413) shows strong cytoplasmic positivity in lymphoid cells outside reaction centra at 1:200-1:500 dilution.



Immunofluorescence

Immunofluorescent staining of human cell line A-431 with IFITM1 polyclonal antibody (Cat # PAB29413) at 1-4 ug/mL concentration shows positivity in cytoplasm.

Specification

Product Description	Rabbit polyclonal antibody raised against recombinant human IFITM1.
Immunogen	Recombinant protein corresponding to human IFITM1.
Sequence	MHKEEHEVAVLGAPPSTILPRSTVINIHSETSVDPH
Host	Rabbit
Reactivity	Human
Form	Liquid
Purification	Antigen affinity purification
Isotype	IgG
Recommend Usage	Immunohistochemistry (1:200-1:500) Immunofluorescence (1-4 ug/mL) Western Blot (1:100-1:250) The optimal working dilution should be determined by the end user.
Storage Buffer	In PBS, pH 7.2 (40% glycerol, 0.02% sodium azide)
Storage Instruction	Store at 4°C. For long term storage store at -20°C. Aliquot to avoid repeated freezing and thawing.
Note	This product contains sodium azide: a POISONOUS AND HAZARDOUS SUBSTANCE which should be handled by trained staff only.

Applications

- Western Blot (Cell lysate)

Western blot analysis of Lane 1: Human cell line RT-4 Lane 2: Human cell line U-251MG sp Lane 3: Human plasma (IgG/HSA depleted) Lane 4: Human liver tissue Lane 5: Human tonsil tissue with IFITM1 polyclonal antibody (Cat # PAB29413) at 1:100-1:250 dilution.

- Immunohistochemistry (Formalin/PFA-fixed paraffin-embedded sections)

Immunohistochemical staining of human lymph node with IFITM1 polyclonal antibody (Cat # PAB29413) shows strong cytoplasmic positivity in lymphoid cells outside reaction centra at 1:200-1:500 dilution.

- Immunofluorescence

Immunofluorescent staining of human cell line A-431 with IFITM1 polyclonal antibody (Cat # PAB29413) at 1-4 ug/mL concentration shows positivity in cytoplasm.

Gene Info — IFITM1

Entrez GeneID	8519
Gene Name	IFITM1
Gene Alias	9-27, CD225, IFI17, LEU13
Gene Description	interferon induced transmembrane protein 1 (9-27)
Omim ID	604456
Gene Ontology	Hyperlink
Other Designations	interferon-induced protein 17

Pathway

- [B cell receptor signaling pathway](#)

Disease

- [Genetic Predisposition to Disease](#)
- [Hepatitis C](#)
- [Ovarian Neoplasms](#)