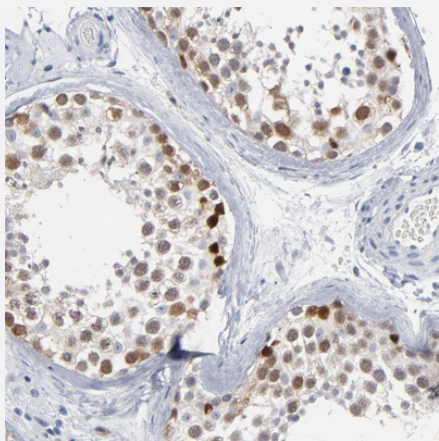


PAGE1 polyclonal antibody

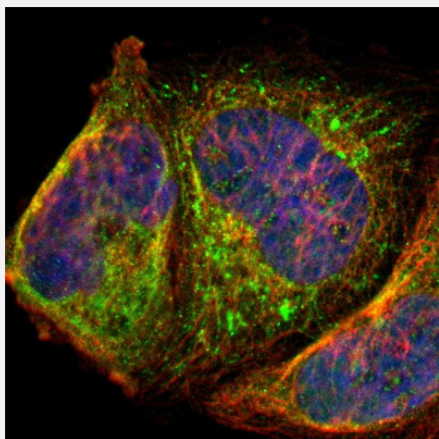
Catalog # PAB29411 Size 100 uL

Applications



Immunohistochemistry (Formalin/PFA-fixed paraffin-embedded sections)

Immunohistochemical staining of human testis with PAGE1 polyclonal antibody (Cat # PAB29411) shows strong nuclear positivity in cells of seminiferous ducts.



Immunofluorescence

Immunofluorescent staining of human cell line A-431 with PAGE1 polyclonal antibody (Cat # PAB29411) at 1-4 ug/mL concentration shows positivity in nucleoli and mitochondria.

Specification

Product Description	Rabbit polyclonal antibody raised against recombinant human PAGE1.
Immunogen	Recombinant protein corresponding to human PAGE1.
Sequence	EESSDEQPDEVESPTQSQDSTPAEEREDEGASAAQGQPEADSQELVQPKTGCELGDGPDTK RVCLRNEEQMKLPAEGPEPEADSQEQVHPKTGCERGDGPDVQELGLPNPEEVKTPEEDE

Host	Rabbit
Reactivity	Human
Form	Liquid
Purification	Antigen affinity purification
Isotype	IgG
Recommend Usage	Immunohistochemistry (1:200-1:500) Immunofluorescence (1-4 ug/mL) The optimal working dilution should be determined by the end user.
Storage Buffer	In PBS, pH 7.2 (40% glycerol, 0.02% sodium azide)
Storage Instruction	Store at 4°C. For long term storage store at -20°C. Aliquot to avoid repeated freezing and thawing.
Note	This product contains sodium azide: a POISONOUS AND HAZARDOUS SUBSTANCE which should be handled by trained staff only.

Applications

- Immunohistochemistry (Formalin/PFA-fixed paraffin-embedded sections)

Immunohistochemical staining of human testis with PAGE1 polyclonal antibody (Cat # PAB29411) shows strong nuclear positivity in cells of seminiferous ducts.

- Immunofluorescence

Immunofluorescent staining of human cell line A-431 with PAGE1 polyclonal antibody (Cat # PAB29411) at 1-4 ug/mL concentration shows positivity in nucleoli and mitochondria.

Gene Info — PAGE1

Entrez GeneID	8712
Gene Name	PAGE1
Gene Alias	GAGE-9, GAGEB1, PAGE-1
Gene Description	P antigen family, member 1 (prostate associated)
Omim ID	300288
Gene Ontology	Hyperlink

Gene Summary

This gene belongs to a family of genes that are expressed in a variety of tumors but not in normal tissues, except for the testis. Unlike the other gene family members, this gene does not encode an antigenic peptide. Nothing is presently known about the function of this protein. [provided by RefSeq]

Other Designations

G antigen, family B, 1 (prostate associated)|OTTHUMP00000032034|P antigen family, member 1
|prostate associated gene 1