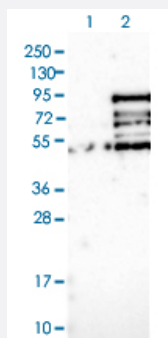


MSL2 polyclonal antibody

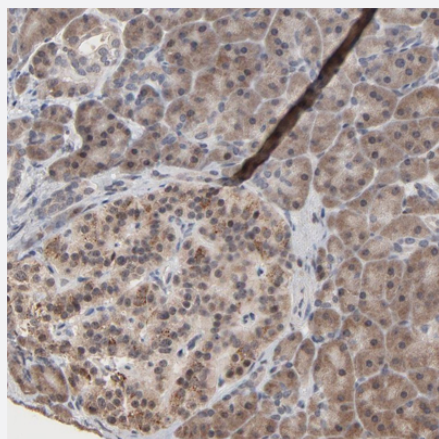
Catalog # PAB29408 Size 100 uL

Applications



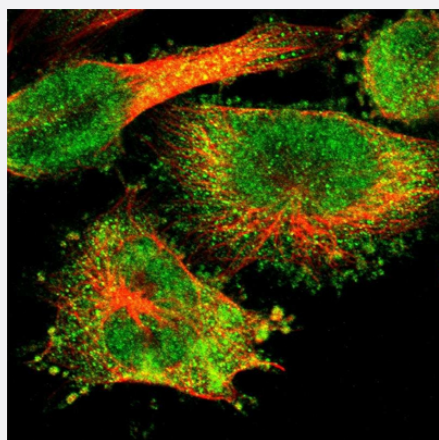
Western Blot (Transfected lysate)

Western blot analysis of Lane 1: Negative control (vector only transfected HEK293T lysate) Lane 2: Over-expression lysate (Co-expressed with a C-terminal myc-DDK tag (~3.1 kDa) in mammalian HEK293T cells) with MSL2 polyclonal antibody (Cat # PAB29408) at 1:500-1:1000 dilution.



Immunohistochemistry (Formalin/PFA-fixed paraffin-embedded sections)

Immunohistochemical staining of human pancreas with MSL2 polyclonal antibody (Cat # PAB29408) shows cytoplasmic positivity in exocrine glandular cells and islet cells at 1:50-1:200 dilution.



Immunofluorescence

Immunofluorescent staining of human cell line U-251 MG with MSL2 polyclonal antibody (Cat # PAB29408) at 1-4 ug/mL concentration shows positivity in cytoplasm and nucleus but excluded from the nucleoli.

Specification

Product Description	Rabbit polyclonal antibody raised against recombinant human MSL2.
Immunogen	Recombinant protein corresponding to human MSL2.
Sequence	SPEHSNTIDVCNTVDIKTEDLSDSLPPVCDTVATDLCSTGIDICSFSEDIKPGDSLSSVEEVLRSL ETVSNTEVCCPNLQPNLEATVSNPGPFLQLSSQSLSHNVFMSTSPALHGLSCTAATPKIAKLNRKR SRSESDSEKVQ
Host	Rabbit
Reactivity	Human
Form	Liquid
Purification	Antigen affinity purification
Isotype	IgG
Recommend Usage	Immunohistochemistry (1:50-1:200) Immunofluorescence (1-4 ug/mL) Western Blot (1:500-1:1000) The optimal working dilution should be determined by the end user.
Storage Buffer	In PBS, pH 7.2 (40% glycerol, 0.02% sodium azide)
Storage Instruction	Store at 4°C. For long term storage store at -20°C. Aliquot to avoid repeated freezing and thawing.
Note	This product contains sodium azide: a POISONOUS AND HAZARDOUS SUBSTANCE which should be handled by trained staff only.

Applications

- Western Blot (Transfected lysate)

Western blot analysis of Lane 1: Negative control (vector only transfected HEK293T lysate) Lane 2: Over-expression lysate (Co-expressed with a C-terminal myc-DDK tag (~3.1 kDa) in mammalian HEK293T cells) with MSL2 polyclonal antibody (Cat # PAB29408) at 1:500-1:1000 dilution.

- Immunohistochemistry (Formalin/PFA-fixed paraffin-embedded sections)

Immunohistochemical staining of human pancreas with MSL2 polyclonal antibody (Cat # PAB29408) shows cytoplasmic positivity in exocrine glandular cells and islet cells at 1:50-1:200 dilution.

- Immunofluorescence

Immunofluorescent staining of human cell line U-251 MG with MSL2 polyclonal antibody (Cat # PAB29408) at 1-4 ug/mL concentration shows positivity in cytoplasm and nucleus but excluded from the nucleoli.

Gene Info — MSL2

Entrez GeneID	55167
---------------	-----------------------

Gene Name	MSL2
-----------	------

Gene Alias	FLJ10546, KIAA1585, MSL-2, MSL2L1, RNF184
------------	---

Gene Description	male-specific lethal 2 homolog (Drosophila)
------------------	---

Gene Ontology	Hyperlink
---------------	---------------------------

Other Designations	male-specific lethal 2-like 1 male-specific lethal-2 homolog ring finger protein 184
--------------------	--