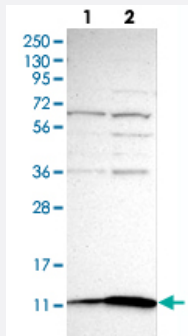


S100A10 polyclonal antibody

Catalog # PAB29397

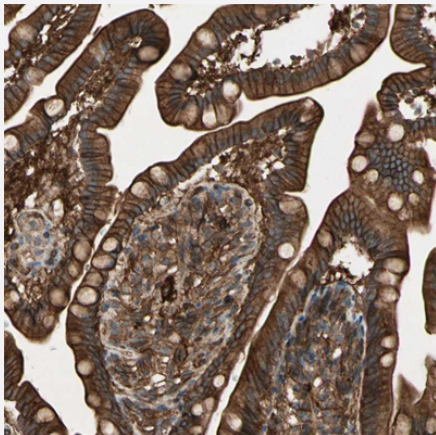
Size 100 uL

Applications



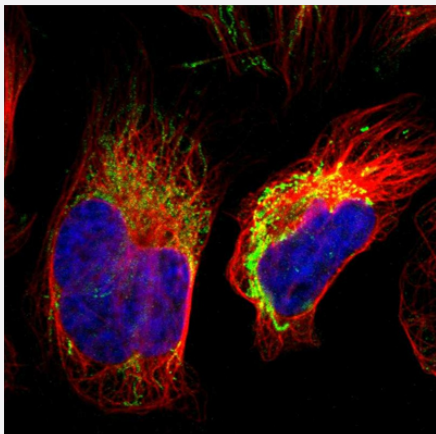
Western Blot (Cell lysate)

Western blot analysis of Lane 1: Human cell line RT-4 Lane 2: Human cell line U-251MG sp with S100A10 polyclonal antibody (Cat # PAB29397) at 1:100-1:250 dilution.



Immunohistochemistry (Formalin/PFA-fixed paraffin-embedded sections)

Immunohistochemical staining of human small intestine with S100A10 polyclonal antibody (Cat # PAB29397) shows strong cytoplasmic and membranous positivity in glandular cells at 1:200-1:500 dilution.



Immunofluorescence

Immunofluorescent staining of human cell line U-2 OS with S100A10 polyclonal antibody (Cat # PAB29397) at 1-4 ug/mL concentration shows positivity in mitochondria.

Specification

Product Description	Rabbit polyclonal antibody raised against recombinant human S100A10.
Immunogen	Recombinant protein corresponding to human S100A10.
Sequence	MPSQMEHAMETMMFTFHKFAGDKGYLTKEDLRVLMEKEFPGFLENQKDPLAVDKIMKDLDQCR DGKV
Host	Rabbit
Reactivity	Human
Form	Liquid
Purification	Antigen affinity purification
Isotype	IgG
Recommend Usage	Immunohistochemistry (1:200-1:500) Immunofluorescence (1-4 ug/mL) Western Blot (1:100-1:250) The optimal working dilution should be determined by the end user.
Storage Buffer	In PBS, pH 7.2 (40% glycerol, 0.02% sodium azide)
Storage Instruction	Store at 4°C. For long term storage store at -20°C. Aliquot to avoid repeated freezing and thawing.
Note	This product contains sodium azide: a POISONOUS AND HAZARDOUS SUBSTANCE which should be handled by trained staff only.

Applications

- Western Blot (Cell lysate)

Western blot analysis of Lane 1: Human cell line RT-4 Lane 2: Human cell line U-251MG sp with S100A10 polyclonal antibody (Cat # PAB29397) at 1:100-1:250 dilution.

- Immunohistochemistry (Formalin/PFA-fixed paraffin-embedded sections)

Immunohistochemical staining of human small intestine with S100A10 polyclonal antibody (Cat # PAB29397) shows strong cytoplasmic and membranous positivity in glandular cells at 1:200-1:500 dilution.

- Immunofluorescence

Immunofluorescent staining of human cell line U-2 OS with S100A10 polyclonal antibody (Cat # PAB29397) at 1-4 ug/mL concentration shows positivity in mitochondria.

Gene Info — S100A10

Entrez GeneID [6281](#)

Gene Name S100A10

Gene Alias 42C, ANX2L, ANX2LG, CAL1L, CLP11, Ca[1], GP11, MGC111133, P11, p10

Gene Description S100 calcium binding protein A10

Omim ID [114085](#)

Gene Ontology [Hyperlink](#)

Gene Summary The protein encoded by this gene is a member of the S100 family of proteins containing 2 EF-hand calcium-binding motifs. S100 proteins are localized in the cytoplasm and/or nucleus of a wide range of cells, and involved in the regulation of a number of cellular processes such as cell cycle progression and differentiation. S100 genes include at least 13 members which are located as a cluster on chromosome 1q21. This protein may function in exocytosis and endocytosis. [provided by RefSeq]

Other Designations OTTHUMP00000015269|OTTHUMP00000015270|S100 calcium binding protein A10 (annexin II ligand, calpactin I, light polypeptide (p11))|S100 calcium-binding protein A10 (annexin II ligand, calpactin I, light polypeptide (p11))|annexin II ligand, calpactin I, lig

Disease

- [Depressive Disorder](#)
- [Dermatitis](#)
- [Genetic Predisposition to Disease](#)
- [Thyroid Neoplasms](#)