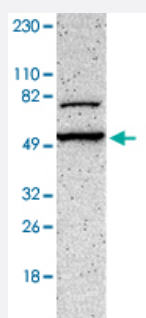


SLC16A1 polyclonal antibody

Catalog # PAB29395

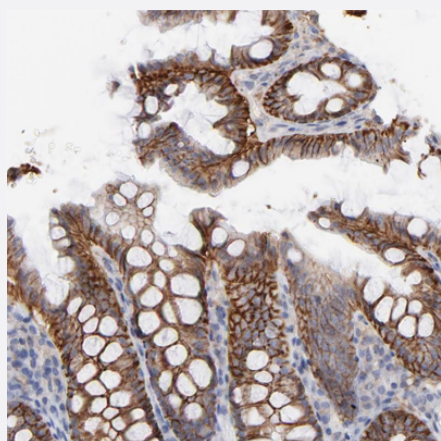
Size 100 uL

Applications



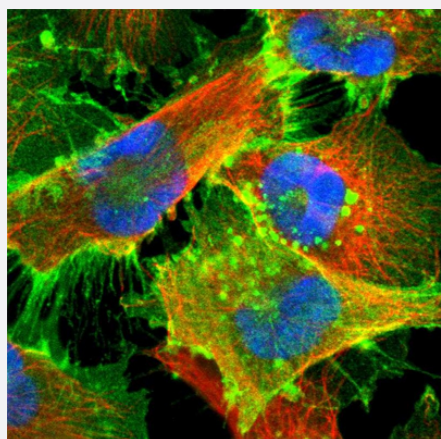
Western Blot (Cell lysate)

Western blot analysis of Human cell line RT-4 with SLC16A1 polyclonal antibody (Cat # PAB29395) at 1:100-1:250 dilution.



Immunohistochemistry (Formalin/PFA-fixed paraffin-embedded sections)

Immunohistochemical staining of human colon with SLC16A1 polyclonal antibody (Cat # PAB29395) shows strong cytoplasmic and membranous positivity in glandular cells at 1:500-1:1000 dilution.



Immunofluorescence

Immunofluorescent staining of human cell line U-251 MG with SLC16A1 polyclonal antibody (Cat # PAB29395) at 1-4 ug/mL concentration shows positivity in plasma membrane.

Specification

Product Description	Rabbit polyclonal antibody raised against recombinant human SLC16A1.
Immunogen	Recombinant protein corresponding to human SLC16A1.
Sequence	PTKAGKDKSKASLEKAGKSGVKKDLHDANTDLIGRHPKQEKRSVFQTINQFLDLTLFTHRGF
Host	Rabbit
Reactivity	Human
Form	Liquid
Purification	Antigen affinity purification
Isotype	IgG
Recommend Usage	Immunohistochemistry (1:500-1:1000) Immunofluorescence (1-4 ug/mL) Western Blot (1:100-1:250) The optimal working dilution should be determined by the end user.
Storage Buffer	In PBS, pH 7.2 (40% glycerol, 0.02% sodium azide)
Storage Instruction	Store at 4°C. For long term storage store at -20°C. Aliquot to avoid repeated freezing and thawing.
Note	This product contains sodium azide: a POISONOUS AND HAZARDOUS SUBSTANCE which should be handled by trained staff only.

Applications

- Western Blot (Cell lysate)

Western blot analysis of Human cell line RT-4 with SLC16A1 polyclonal antibody (Cat # PAB29395) at 1:100-1:250 dilution.

- Immunohistochemistry (Formalin/PFA-fixed paraffin-embedded sections)

Immunohistochemical staining of human colon with SLC16A1 polyclonal antibody (Cat # PAB29395) shows strong cytoplasmic and membranous positivity in glandular cells at 1:500-1:1000 dilution.

- Immunofluorescence

Immunofluorescent staining of human cell line U-251 MG with SLC16A1 polyclonal antibody (Cat # PAB29395) at 1-4 ug/mL concentration shows positivity in plasma membrane.

Gene Info — SLC16A1

Entrez GeneID	6566
Gene Name	SLC16A1
Gene Alias	FLJ36745, HHF7, MCT, MCT1, MGC44475
Gene Description	solute carrier family 16, member 1 (monocarboxylic acid transporter 1)
Omim ID	245340 600682
Gene Ontology	Hyperlink
Gene Summary	The SLC16A1 gene encodes a monocarboxylate transporter (MCT1) that mediates the movement of lactate and pyruvate across cell membranes. Import and export of these substrates by tissues such as erythrocytes, muscle, intestine, and kidney are ascribed largely to the action of a proton-coupled MCT (Garcia et al., 1994 [PubMed 8124722]).[supplied by OMIM]
Other Designations	OTTHUMP00000013960 monocarboxylate transporter 1 solute carrier family 16 (monocarboxylic acid transporters), member 1 solute carrier family 16, member 1

Disease

- [Cardiovascular Diseases](#)
- [Diabetes Mellitus](#)
- [Edema](#)
- [Hearing Loss](#)
- [Kidney Failure](#)