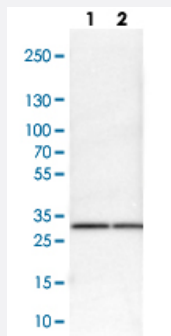


# PHB polyclonal antibody

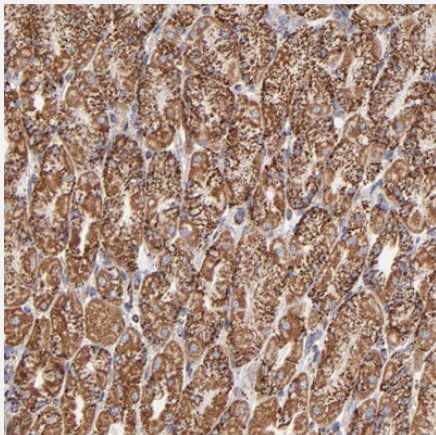
Catalog # PAB29392      Size 100 uL

## Applications



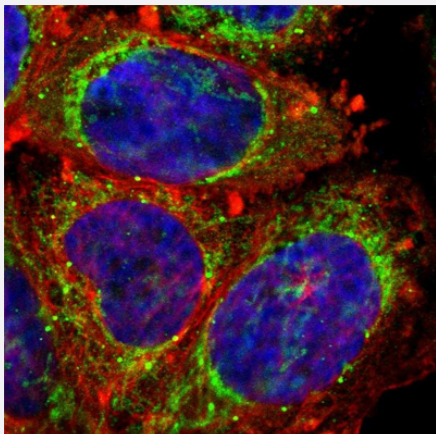
### Western Blot (Cell lysate)

Western blot analysis of Lane 1: NIH-3T3 cell lysate (Mouse embryonic fibroblast cells) Lane 2: NBT-II cell lysate (Rat Wistar bladder tumour cells) with PHB polyclonal antibody (Cat # PAB29392) at 1:100-1:250 dilution.



### Immunohistochemistry (Formalin/PFA-fixed paraffin-embedded sections)

Immunohistochemical staining of human stomach with PHB polyclonal antibody (Cat # PAB29392) shows strong cytoplasmic positivity, with a granular pattern, in glandular cells at 1:200-1:500 dilution.



### Immunofluorescence

Immunofluorescent staining of human cell line A-431 with PHB polyclonal antibody (Cat # PAB29392) at 1-4 ug/mL concentration shows positivity in mitochondria and vesicles.

## Specification

<b>Product Description</b>	Rabbit polyclonal antibody raised against recombinant human PHB.
<b>Immunogen</b>	Recombinant protein corresponding to human PHB.
<b>Sequence</b>	DVSLTHLTFGKEFTEAVEAKQVAQQEAERARFVVEKAEQQKKAIIISAEGDSKAAELIANSLATA GDGLIELRKLEAAEDIAYQLSRSRNITYLP
<b>Host</b>	Rabbit
<b>Reactivity</b>	Human, Mouse, Rat
<b>Form</b>	Liquid
<b>Purification</b>	Antigen affinity purification
<b>Isotype</b>	IgG
<b>Recommend Usage</b>	Immunohistochemistry (1:200-1:500) Immunofluorescence (1-4 ug/mL) Western Blot (1:100-1:250) The optimal working dilution should be determined by the end user.
<b>Storage Buffer</b>	In PBS, pH 7.2 (40% glycerol, 0.02% sodium azide)
<b>Storage Instruction</b>	Store at 4°C. For long term storage store at -20°C. Aliquot to avoid repeated freezing and thawing.
<b>Note</b>	This product contains sodium azide: a POISONOUS AND HAZARDOUS SUBSTANCE which should be handled by trained staff only.

## Applications

- Western Blot (Cell lysate)

Western blot analysis of Lane 1: NIH-3T3 cell lysate (Mouse embryonic fibroblast cells) Lane 2: NBT-II cell lysate (Rat Wistar bladder tumour cells) with PHB polyclonal antibody (Cat # PAB29392) at 1:100-1:250 dilution.

- Immunohistochemistry (Formalin/PFA-fixed paraffin-embedded sections)

Immunohistochemical staining of human stomach with PHB polyclonal antibody (Cat # PAB29392) shows strong cytoplasmic positivity, with a granular pattern, in glandular cells at 1:200-1:500 dilution.

- Immunofluorescence

Immunofluorescent staining of human cell line A-431 with PHB polyclonal antibody (Cat # PAB29392) at 1-4 ug/mL concentration shows positivity in mitochondria and vesicles.

## Gene Info — PHB

Entrez GeneID [5245](#)

Gene Name PHB

Gene Alias PHB1

Gene Description prohibitin

Omim ID [176705](#)

Gene Ontology [Hyperlink](#)

**Gene Summary** Prohibitin is an evolutionarily conserved gene that is ubiquitously expressed. It is thought to be a negative regulator of cell proliferation and may be a tumor suppressor. Mutations in PHB have been linked to sporadic breast cancer. Prohibitin is expressed as two transcripts with varying lengths of 3' untranslated region. The longer transcript is present at higher levels in proliferating tissues and cells, suggesting that this longer 3' untranslated region may function as a trans-acting regulatory RNA. [provided by RefSeq]

Other Designations -

## Disease

- [Breast cancer](#)
- [Breast Neoplasms](#)
- [Genetic Predisposition to Disease](#)
- [Lung Neoplasms](#)
- [Ovarian cancer](#)
- [Ovarian Neoplasms](#)
- [Pulmonary Disease](#)
- [Urinary Bladder Neoplasms](#)
- [Werner syndrome](#)