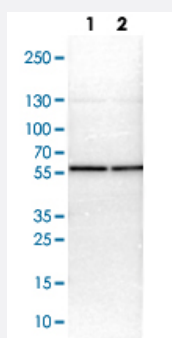


CCT2 polyclonal antibody

Catalog # PAB29386

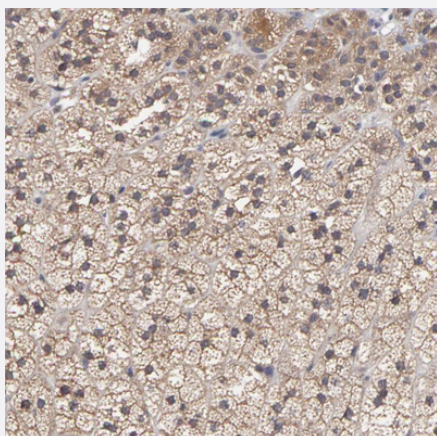
Size 100 uL

Applications



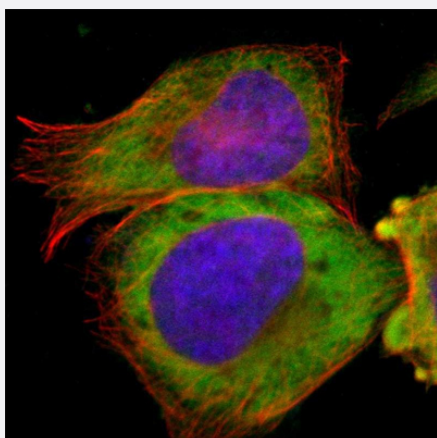
Western Blot (Cell lysate)

Western blot analysis of Lane 1: NIH-3T3 cell lysate (Mouse embryonic fibroblast cells) Lane 2: NBT-II cell lysate (Rat Wistar bladder tumour cells) with CCT2 polyclonal antibody (Cat # PAB29386) at 1:100-1:250 dilution.



Immunohistochemistry (Formalin/PFA-fixed paraffin-embedded sections)

Immunohistochemical staining of human adrenal gland with CCT2 polyclonal antibody (Cat # PAB29386) shows cytoplasmic positivity in cortical cells at 1:200-1:500 dilution.



Immunofluorescence

Immunofluorescent staining of human cell line U-2 OS with CCT2 polyclonal antibody (Cat # PAB29386) at 1-4 ug/mL concentration shows positivity in cytoplasm.

Specification

Product Description	Rabbit polyclonal antibody raised against recombinant human CCT2.
Immunogen	Recombinant protein corresponding to human CCT2.
Sequence	VNQPKRIENAKILANTGMDTDKIKIFGSRVRVDSTAKVAEIEHAEKEKMKEKVERILKHGINCFINRQ LYNYPEQLFGAAGVMAIEHADDFAGVERLALVTGGEIASTFDHPELVKLGSKLIEEVMIGEDKLIHF SGV
Host	Rabbit
Reactivity	Human, Mouse, Rat
Form	Liquid
Purification	Antigen affinity purification
Isotype	IgG
Recommend Usage	Immunohistochemistry (1:200-1:500) Immunofluorescence (1-4 ug/mL) Western Blot (1:100-1:250) The optimal working dilution should be determined by the end user.
Storage Buffer	In PBS, pH 7.2 (40% glycerol, 0.02% sodium azide)
Storage Instruction	Store at 4°C. For long term storage store at -20°C. Aliquot to avoid repeated freezing and thawing.
Note	This product contains sodium azide: a POISONOUS AND HAZARDOUS SUBSTANCE which should be handled by trained staff only.

Applications

- Western Blot (Cell lysate)

Western blot analysis of Lane 1: NIH-3T3 cell lysate (Mouse embryonic fibroblast cells) Lane 2: NBT-II cell lysate (Rat Wistar bladder tumour cells) with CCT2 polyclonal antibody (Cat # PAB29386) at 1:100-1:250 dilution.

- Immunohistochemistry (Formalin/PFA-fixed paraffin-embedded sections)

Immunohistochemical staining of human adrenal gland with CCT2 polyclonal antibody (Cat # PAB29386) shows cytoplasmic positivity in cortical cells at 1:200-1:500 dilution.

- Immunofluorescence

Immunofluorescent staining of human cell line U-2 OS with CCT2 polyclonal antibody (Cat # PAB29386) at 1-4 ug/mL concentration shows positivity in cytoplasm.

Gene Info — CCT2

Entrez GeneID [10576](#)

Gene Name CCT2

Gene Alias 99D8.1, CCT-beta, CCTB, MGC142074, MGC142076, PRO1633, TCP-1-beta

Gene Description chaperonin containing TCP1, subunit 2 (beta)

Omim ID [605139](#)

Gene Ontology [Hyperlink](#)

Gene Summary This gene encodes a molecular chaperone that is member of the chaperonin containing TCP1 complex (CCT), also known as the TCP1 ring complex (TRiC). This complex consists of two identical stacked rings, each containing eight different proteins. Unfolded polypeptides enter the central cavity of the complex and are folded in an ATP-dependent manner. The complex folds various proteins, including actin and tubulin. Alternate transcriptional splice variants of the gene described in this record have been observed but have not been thoroughly characterized. [provided by RefSeq]

Other Designations T-complex protein 1 subunit beta|T-complex protein 1, beta subunit|chaperonin containing TCP1, subunit 2|chaperonin containing t-complex polypeptide 1, beta subunit|chaperonin containing t-complex polypeptide 1, subunit 2

Disease

- [Cerebral Hemorrhage](#)
- [Genetic Predisposition to Disease](#)
- [Hypertension](#)
- [Intracranial Hemorrhages](#)
- [Stroke](#)
- [Subarachnoid Hemorrhage](#)