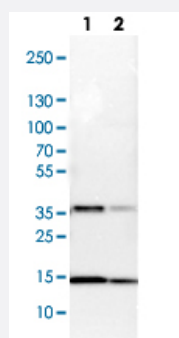


# SSBP1 polyclonal antibody

Catalog # PAB29378

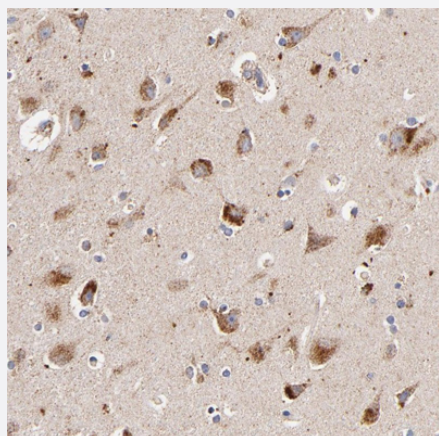
Size 100 uL

## Applications



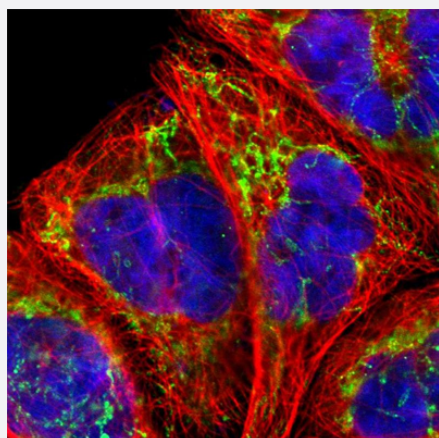
### Western Blot (Cell lysate)

Western blot analysis of Lane 1: NIH-3T3 cell lysate (Mouse embryonic fibroblast cells) Lane 2: NBT-II cell lysate (Rat Wistar bladder tumour cells) with SSBP1 polyclonal antibody (Cat # PAB29378) at 1:100-1:250 dilution.



### Immunohistochemistry (Formalin/PFA-fixed paraffin-embedded sections)

Immunohistochemical staining of human lateral ventricle with SSBP1 polyclonal antibody (Cat # PAB29378) shows strong cytoplasmic positivity in granular pattern in neuronal cells at 1:200-1:500 dilution.



### Immunofluorescence

Immunofluorescent staining of human cell line A-431 with SSBP1 polyclonal antibody (Cat # PAB29378) at 1-4 ug/mL concentration shows positivity in mitochondria.

## Specification

<b>Product Description</b>	Rabbit polyclonal antibody raised against recombinant human SSBP1.
<b>Immunogen</b>	Recombinant protein corresponding to human SSBP1.
<b>Sequence</b>	LQVLRQFVRHESETTSLVLERSLNRVHLLGRVGQDPVLRQVEGKNPVTIFSLATNEMWRS GDS EVYQLGDVSQKTTWHRISVFRPGLRDVAYQYVKKGSRYLEGKIDYGEYMDKNNVRRQATTIADNII FLSDQTK E
<b>Host</b>	Rabbit
<b>Reactivity</b>	Human, Mouse, Rat
<b>Form</b>	Liquid
<b>Purification</b>	Antigen affinity purification
<b>Isotype</b>	IgG
<b>Recommend Usage</b>	Immunohistochemistry (1:200-1:500) Immunofluorescence (1-4 ug/mL) Western Blot (1:100-1:250) The optimal working dilution should be determined by the end user.
<b>Storage Buffer</b>	In PBS, pH 7.2 (40% glycerol, 0.02% sodium azide)
<b>Storage Instruction</b>	Store at 4°C. For long term storage store at -20°C. Aliquot to avoid repeated freezing and thawing.
<b>Note</b>	This product contains sodium azide: a POISONOUS AND HAZARDOUS SUBSTANCE which should be handled by trained staff only.

## Applications

- Western Blot (Cell lysate)

Western blot analysis of Lane 1: NIH-3T3 cell lysate (Mouse embryonic fibroblast cells) Lane 2: NBT-II cell lysate (Rat Wistar bladder tumour cells) with SSBP1 polyclonal antibody (Cat # PAB29378) at 1:100-1:250 dilution.

- Immunohistochemistry (Formalin/PFA-fixed paraffin-embedded sections)

Immunohistochemical staining of human lateral ventricle with SSBP1 polyclonal antibody (Cat # PAB29378) shows strong cytoplasmic positivity in granular pattern in neuronal cells at 1:200-1:500 dilution.

- Immunofluorescence

Immunofluorescent staining of human cell line A-431 with SSBP1 polyclonal antibody (Cat # PAB29378) at 1-4 ug/mL concentration shows positivity in mitochondria.

## Gene Info — SSBP1

Entrez GeneID	<a href="#">6742</a>
Gene Name	SSBP1
Gene Alias	SSBP
Gene Description	single-stranded DNA binding protein 1
Omim ID	<a href="#">600439</a>
Gene Ontology	<a href="#">Hyperlink</a>
Gene Summary	SSBP is a housekeeping gene involved in mitochondrial biogenesis (Tiranti et al., 1995 [PubMed 7789991]).[supplied by OMIM]
Other Designations	single-stranded DNA-binding protein 1

## Pathway

- [DNA replication](#)
- [Homologous recombination](#)
- [Mismatch repair](#)