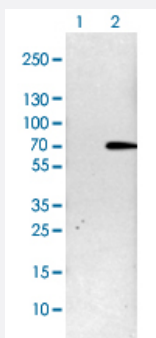


PTPN6 polyclonal antibody

Catalog # PAB29368

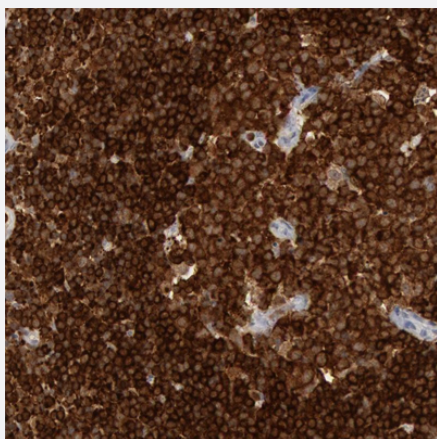
Size 100 uL

Applications



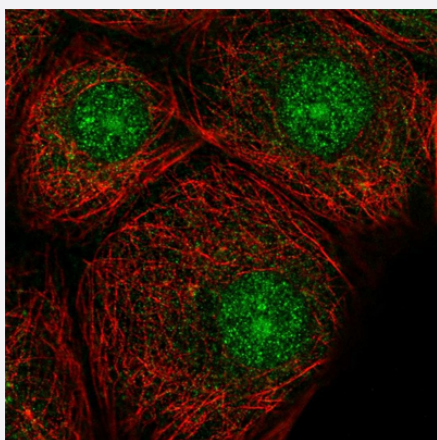
Western Blot (Cell lysate)

Western blot analysis of Lane 1: NIH-3T3 cell lysate (Mouse embryonic fibroblast cells) Lane 2: NBT-II cell lysate (Rat Wistar bladder tumour cells) with PTPN6 polyclonal antibody (Cat # PAB29368) at 1:100-1:250 dilution.



Immunohistochemistry (Formalin/PFA-fixed paraffin-embedded sections)

Immunohistochemical staining of human lymph node with PTPN6 polyclonal antibody (Cat # PAB29368) shows strong cytoplasmic positivity in reaction center cells and lymphoid cells outside reaction centra at 1:200-1:500 dilution.



Immunofluorescence

Immunofluorescent staining of human cell line MCF-7 with PTPN6 polyclonal antibody (Cat # PAB29368) at 1-4 ug/mL concentration shows positivity in nucleus and nucleoli.

Specification

Product Description	Rabbit polyclonal antibody raised against recombinant human PTPN6.
Immunogen	Recombinant protein corresponding to human PTPN6.
Sequence	HAGPIIVHCSAGIGRTGTIVIDMLMENISTKGLDCDIDIQKTIQMVRAQRSGMVQTEAQYKFYVAIAQF IETTKKKLEVLQSQKGQSEYGNITYPPAMKNAHAKASRTSSKHKEDVYENLHTKNKREEKVKKQ RSADKEKSKGSLK
Host	Rabbit
Reactivity	Human, Rat
Form	Liquid
Purification	Antigen affinity purification
Isotype	IgG
Recommend Usage	Immunohistochemistry (1:200-1:500) Immunofluorescence (1-4 ug/mL) Western Blot (1:100-1:250) The optimal working dilution should be determined by the end user.
Storage Buffer	In PBS, pH 7.2 (40% glycerol, 0.02% sodium azide)
Storage Instruction	Store at 4°C. For long term storage store at -20°C. Aliquot to avoid repeated freezing and thawing.
Note	This product contains sodium azide: a POISONOUS AND HAZARDOUS SUBSTANCE which should be handled by trained staff only.

Applications

- Western Blot (Cell lysate)

Western blot analysis of Lane 1: NIH-3T3 cell lysate (Mouse embryonic fibroblast cells) Lane 2: NBT-II cell lysate (Rat Wistar bladder tumour cells) with PTPN6 polyclonal antibody (Cat # PAB29368) at 1:100-1:250 dilution.

- Immunohistochemistry (Formalin/PFA-fixed paraffin-embedded sections)

Immunohistochemical staining of human lymph node with PTPN6 polyclonal antibody (Cat # PAB29368) shows strong cytoplasmic positivity in reaction center cells and lymphoid cells outside reaction center at 1:200-1:500 dilution.

- Immunofluorescence

Immunofluorescent staining of human cell line MCF-7 with PTPN6 polyclonal antibody (Cat # PAB29368) at 1-4 ug/mL concentration shows positivity in nucleus and nucleoli.

Gene Info — PTPN6

Entrez GeneID [5777](#)

Gene Name PTPN6

Gene Alias HCP, HCPH, HPTP1C, PTP-1C, SH-PTP1, SHP-1, SHP-1L, SHP1

Gene Description protein tyrosine phosphatase, non-receptor type 6

Omim ID [176883](#)

Gene Ontology [Hyperlink](#)

Gene Summary

The protein encoded by this gene is a member of the protein tyrosine phosphatase (PTP) family. PTPs are known to be signaling molecules that regulate a variety of cellular processes including cell growth, differentiation, mitotic cycle, and oncogenic transformation. N-terminal part of this PTP contains two tandem Src homolog (SH2) domains, which act as protein phospho-tyrosine binding domains, and mediate the interaction of this PTP with its substrates. This PTP is expressed primarily in hematopoietic cells, and functions as an important regulator of multiple signaling pathways in hematopoietic cells. This PTP has been shown to interact with, and dephosphorylate a wide spectrum of phospho-proteins involved in hematopoietic cell signaling. Multiple alternatively spliced variants of this gene, which encode distinct isoforms, have been reported. [provided by RefSeq]

Other Designations hematopoietic cell phosphatase|hematopoietic cell protein-tyrosine phosphatase|protein-tyrosine phosphatase 1C

Pathway

- [Adherens junction](#)
- [B cell receptor signaling pathway](#)
- [Jak-STAT signaling pathway](#)
- [Natural killer cell mediated cytotoxicity](#)
- [T cell receptor signaling pathway](#)

Disease

- [Alzheimer disease](#)
- [Cerebral Amyloid Angiopathy](#)
- [Genetic Predisposition to Disease](#)
- [Lupus Erythematosus](#)
- [Neuroblastoma](#)