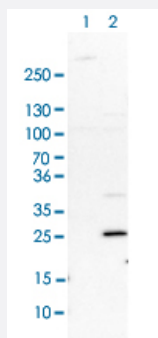


FHL1 polyclonal antibody

Catalog # PAB29356

Size 100 μ L

Applications



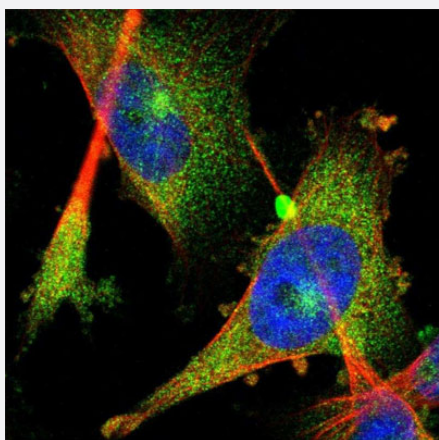
Western Blot (Cell lysate)

Western blot analysis of Lane 1: NIH-3T3 cell lysate (Mouse embryonic fibroblast cells) Lane 2: NBT-II cell lysate (Rat Wistar bladder tumour cells) with FHL1 polyclonal antibody (Cat # PAB29356) at 1:100-1:250 dilution.



Immunohistochemistry (Formalin/PFA-fixed paraffin-embedded sections)

Immunohistochemical staining of human skeletal muscle with FHL1 polyclonal antibody (Cat # PAB29356) shows strong nuclear and cytoplasmic positivity in myocytes at 1:200-1:500 dilution.



Immunofluorescence

Immunofluorescent staining of human cell line U-251 MG with FHL1 polyclonal antibody (Cat # PAB29356) at 1-4 μ g/mL concentration shows positivity in cytoplasm.

Specification

Product Description	Rabbit polyclonal antibody raised against recombinant human FHL1.
Immunogen	Recombinant protein corresponding to human FHL1.
Sequence	KFCANTCVECRKPIGADSKEVHYKNRFWHDTCFRCAKCLHPLANETFVAKDNKILCNKCTTRED SPKCKGCGFKAVAGDQNVEYKGTVWHKDCFTCSNCKQV
Host	Rabbit
Reactivity	Human, Rat
Form	Liquid
Purification	Antigen affinity purification
Isotype	IgG
Recommend Usage	Immunohistochemistry (1:200-1:500) Immunofluorescence (1-4 ug/mL) Western Blot (1:100-1:250) The optimal working dilution should be determined by the end user.
Storage Buffer	In PBS, pH 7.2 (40% glycerol, 0.02% sodium azide)
Storage Instruction	Store at 4°C. For long term storage store at -20°C. Aliquot to avoid repeated freezing and thawing.
Note	This product contains sodium azide: a POISONOUS AND HAZARDOUS SUBSTANCE which should be handled by trained staff only.

Applications

- Western Blot (Cell lysate)

Western blot analysis of Lane 1: NIH-3T3 cell lysate (Mouse embryonic fibroblast cells) Lane 2: NBT-II cell lysate (Rat Wistar bladder tumour cells) with FHL1 polyclonal antibody (Cat # PAB29356) at 1:100-1:250 dilution.

- Immunohistochemistry (Formalin/PFA-fixed paraffin-embedded sections)

Immunohistochemical staining of human skeletal muscle with FHL1 polyclonal antibody (Cat # PAB29356) shows strong nuclear and cytoplasmic positivity in myocytes at 1:200-1:500 dilution.

- Immunofluorescence

Immunofluorescent staining of human cell line U-251 MG with FHL1 polyclonal antibody (Cat # PAB29356) at 1-4 ug/mL concentration shows positivity in cytoplasm.

Gene Info — FHL1

Entrez GeneID	2273
Gene Name	FHL1
Gene Alias	FHL1B, FLH1A, KYO-T, MGC111107, SLIM1, XMPMA, bA535K18.1
Gene Description	four and a half LIM domains 1
Omim ID	300163
Gene Ontology	Hyperlink
Gene Summary	LIM proteins, named for 'LIN11, ISL1, and MEC3,' are defined by the possession of a highly conserved double zinc finger motif called the LIM domain.[supplied by OMIM]
Other Designations	Four-and-a-half LIM domains 1 OTTHUMP00000024097 bA535K18.1 (LIM protein SLIMMER)