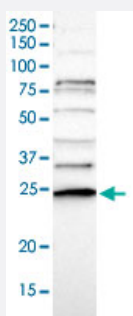


# CD34 polyclonal antibody

Catalog # PAB29333

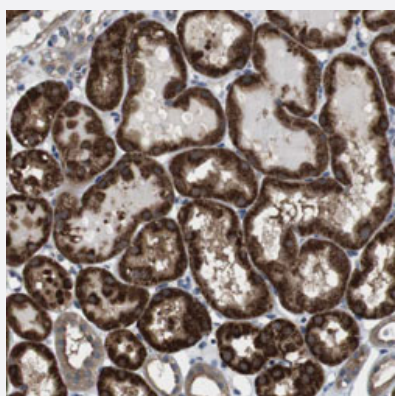
Size 100 uL

## Applications



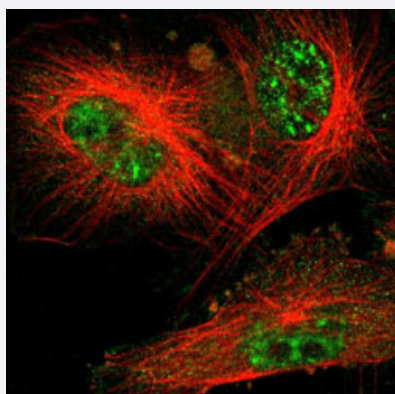
### Western Blot

Western blot analysis of Human cell line RT-4 with CD34 polyclonal antibody (Cat# PAB29333) at 1:100-1:250 dilution.



### Immunohistochemistry (Formalin/PFA-fixed paraffin-embedded sections)

Immunohistochemical staining of human kidney with CD34 polyclonal antibody (Cat# PAB29333) shows strong cytoplasmic positivity in cells of tubules at 1:50-1:200 dilution.



### Immunofluorescence

Immunofluorescent staining of human cell line U-251 MG with CD34 polyclonal antibody (Cat# PAB29333) under 1-4 ug/mL working concentration shows positivity in cytoplasm and nucleus but excluded from the nucleoli.

## Specification

|                     |   |
|---------------------|---|
| Product Description | Rabbit polyclonal antibody raised against recombinant human CD34.   |
| Immunogen           | Recombinant protein corresponding to amino acids of human CD34.   |
| Sequence            | LNEPNTFSPANVDASVMYRKWKESKGKDREYTDIIRKQVLGTKVDAERDGVKVPPTTLAEYCVKTK<br>APAPDEGSDLFYDDYYEDGEVEEEEADSCFGDDEDDSGT   |
| Host                | Rabbit  |
| Reactivity          | Human   |
| Form                | Liquid  |
| Purification        | Antigen affinity purification   |
| Isotype             | IgG   |
| Recommend Usage     | Immunohistochemistry (1:50-1:200)<br>Western Blot (1:100-1:250)<br>Immunofluorescence (1-4 ug/mL)<br>The optimal working dilution should be determined by the end user. |
| Storage Buffer      | In PBS, pH 7.2 (40% glycerol, 0.02% sodium azide)   |
| Storage Instruction | Store at 4°C. For long term storage store at -20°C.<br>Aliquot to avoid repeated freezing and thawing.  |
| Note                | This product contains sodium azide: a POISONOUS AND HAZARDOUS SUBSTANCE which should be handled by trained staff only.  |

## Applications

- Western Blot

Western blot analysis of Human cell line RT-4 with CD34 polyclonal antibody (Cat# PAB29333) at 1:100-1:250 dilution.

- Immunohistochemistry (Formalin/PFA-fixed paraffin-embedded sections)

Immunohistochemical staining of human kidney with CD34 polyclonal antibody (Cat# PAB29333) shows strong cytoplasmic positivity in cells of tubules at 1:50-1:200 dilution.

- Immunofluorescence

Immunofluorescent staining of human cell line U-251 MG with CD34 polyclonal antibody (Cat# PAB29333) under 1-4 ug/mL working concentration shows positivity in cytoplasm and nucleus but excluded from the nucleoli.

## Gene Info — CDC34

|                    |   |
|--------------------|---|
| Entrez GeneID      | <a href="#">997</a>   |
| Protein Accession# | <a href="#">P49427</a>  |
| Gene Name          | CDC34   |
| Gene Alias         | E2-CDC34, UBC3, UBE2R1  |
| Gene Description   | cell division cycle 34 homolog (S. cerevisiae)  |
| Omim ID            | <a href="#">116948</a>  |
| Gene Ontology      | <a href="#">Hyperlink</a>   |
| Gene Summary       | The protein encoded by this gene is a member of the ubiquitin-conjugating enzyme family. Ubiquitin-conjugating enzyme catalyzes the covalent attachment of ubiquitin to other proteins. This protein is a part of the large multiprotein complex, which is required for ubiquitin-mediated degradation of cell cycle G1 regulators, and for the initiation of DNA replication. [provided by RefSeq] |
| Other Designations | ubiquitin carrier protein ubiquitin-conjugating enzyme Cdc34 ubiquitin-conjugating enzyme E2-32 KDA complementing ubiquitin-protein ligase  |

## Pathway

- [Ubiquitin mediated proteolysis](#)

## Disease

- [Breast cancer](#)
- [Breast Neoplasms](#)
- [Celiac Disease](#)
- [Genetic Predisposition to Disease](#)
- [Tobacco Use Disorder](#)