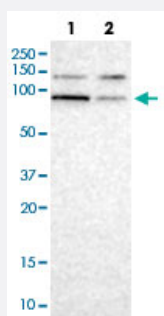


# CUL5 polyclonal antibody

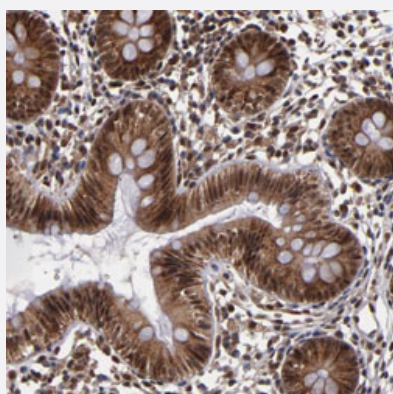
Catalog # PAB29330      Size 100 uL

## Applications



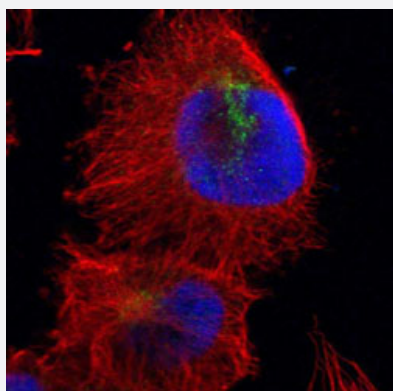
### Western Blot (Cell lysate)

Western blot analysis of Lane 1: Human cell line RT-4; Lane 2: Human cell line U-251MG sp with CUL5 polyclonal antibody (Cat# PAB29330) at 1:100-1:250 dilution.



### Immunohistochemistry (Formalin/PFA-fixed paraffin-embedded sections)

Immunohistochemical staining of human colon with CUL5 polyclonal antibody (Cat# PAB29330) shows strong nuclear and cytoplasmic positivity in glandular cells at 1:50-1:200 dilution.



### Immunofluorescence

Immunofluorescent staining of human cell line U-251 MG with CUL5 polyclonal antibody (Cat# PAB29330) under 1-4 ug/mL working concentration shows positivity in the Golgi apparatus.

## Specification

Product Description	Rabbit polyclonal antibody raised against recombinant human CUL5.
Immunogen	Recombinant protein corresponding to amino acids of human CUL5.
Sequence	FSLMDKVPNGIEPMLKDLEEHIISAGLADMVAAAETITTDSEKYVEQLLTLFNRFSLVKEAFQDDP RFLTARDKAYKAVVNDATIFKLELPLKQKGVGLKTQPESKCEPELLANYCDMLLRK
Host	Rabbit
Reactivity	Human
Form	Liquid
Purification	Antigen affinity purification
Isotype	IgG
Recommend Usage	Immunohistochemistry (1:50-1:200) Western Blot (1:100-1:250) Immunofluorescence (1-4 ug/mL) The optimal working dilution should be determined by the end user.
Storage Buffer	In PBS, pH 7.2 (40% glycerol, 0.02% sodium azide)
Storage Instruction	Store at 4°C. For long term storage store at -20°C. Aliquot to avoid repeated freezing and thawing.
Note	This product contains sodium azide: a POISONOUS AND HAZARDOUS SUBSTANCE which should be handled by trained staff only.

## Applications

- Western Blot (Cell lysate)

Western blot analysis of Lane 1: Human cell line RT-4; Lane 2: Human cell line U-251MG sp with CUL5 polyclonal antibody (Cat# PAB29330) at 1:100-1:250 dilution.

- Immunohistochemistry (Formalin/PFA-fixed paraffin-embedded sections)

Immunohistochemical staining of human colon with CUL5 polyclonal antibody (Cat# PAB29330) shows strong nuclear and cytoplasmic positivity in glandular cells at 1:50-1:200 dilution.

- Immunofluorescence

Immunofluorescent staining of human cell line U-251 MG with CUL5 polyclonal antibody (Cat# PAB29330) under 1-4 ug/mL working concentration shows positivity in the Golgi apparatus.

## Gene Info — CUL5

Entrez GeneID	<a href="#">8065</a>
Protein Accession#	<a href="#">Q93034</a>
Gene Name	CUL5
Gene Alias	VACM-1, VACM1
Gene Description	cullin 5
Omim ID	<a href="#">601741</a>
Gene Ontology	<a href="#">Hyperlink</a>
Other Designations	Cullin-5 (vasopressin-activated calcium-mobilizing receptor-1) Vasopressin-activated calcium-mobilizing receptor-1

## Pathway

- [Ubiquitin mediated proteolysis](#)

## Disease

- [HIV Infections](#)