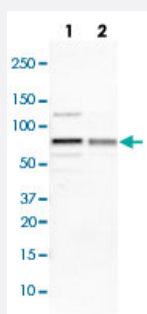


IGF2BP3 polyclonal antibody

Catalog # PAB29324

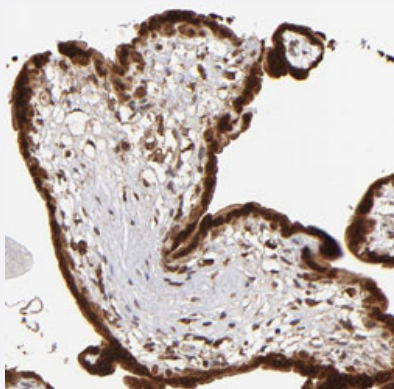
Size 100 uL

Applications



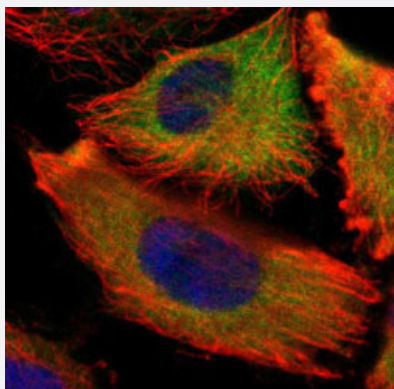
Western Blot (Cell lysate)

Western blot analysis of Lane 1: NIH-3T3 cell lysate (Mouse embryonic fibroblast cells); Lane 2: NBT-II cell lysate (Rat Wistar bladder tumour cells) with IGF2BP3 polyclonal antibody (Cat# PAB29324) at 1:100-1:250 dilution.



Immunohistochemistry (Formalin/PFA-fixed paraffin-embedded sections)

Immunohistochemical staining of human placenta with IGF2BP3 polyclonal antibody (Cat# PAB29324) shows strong cytoplasmic and nuclear positivity in trophoblastic cell at 1:50-1:200 dilution.



Immunofluorescence

Immunofluorescent staining of human cell line U-251 MG with IGF2BP3 polyclonal antibody (Cat# PAB29324) under 1-4 ug/mL working concentration shows positivity in cytoplasm.

Specification

Product Description	Rabbit polyclonal antibody raised against recombinant human IGF2BP3.
Immunogen	Recombinant protein corresponding to amino acids of human IGF2BP3.
Sequence	VVESCEQVNTDSETAVVNVITYSSKDQARQALDKLNGFQLENFTLKVAYIPDEMAAQQNPLQQPR GRRGLGQRGSSSRQGSPGSVSKQKPCDLPLRLLVPTQFVGAIGKEGATIRNITKQTQ
Host	Rabbit
Reactivity	Human, Mouse, Rat
Form	Liquid
Purification	Antigen affinity purification
Isotype	IgG
Recommend Usage	Immunohistochemistry (1:50-1:200) Western Blot (1:100-1:250) Immunofluorescence (1-4 ug/mL) The optimal working dilution should be determined by the end user.
Storage Buffer	In PBS, pH 7.2 (40% glycerol, 0.02% sodium azide)
Storage Instruction	Store at 4°C. For long term storage store at -20°C. Aliquot to avoid repeated freezing and thawing.
Note	This product contains sodium azide: a POISONOUS AND HAZARDOUS SUBSTANCE which should be handled by trained staff only.

Applications

- Western Blot (Cell lysate)

Western blot analysis of Lane 1: NIH-3T3 cell lysate (Mouse embryonic fibroblast cells); Lane 2: NBT-II cell lysate (Rat Wistar bladder tumour cells) with IGF2BP3 polyclonal antibody (Cat# PAB29324) at 1:100-1:250 dilution.

- Immunohistochemistry (Formalin/PFA-fixed paraffin-embedded sections)

Immunohistochemical staining of human placenta with IGF2BP3 polyclonal antibody (Cat# PAB29324) shows strong cytoplasmic and nuclear positivity in trophoblastic cell at 1:50-1:200 dilution.

- Immunofluorescence

Immunofluorescent staining of human cell line U-251 MG with IGF2BP3 polyclonal antibody (Cat# PAB29324) under 1-4 ug/mL working concentration shows positivity in cytoplasm.

Gene Info — IGF2BP3

Entrez GeneID	10643
Protein Accession#	O00425
Gene Name	IGF2BP3
Gene Alias	DKFZp686F1078, IMP-3, IMP3, KOC1, VICKZ3
Gene Description	insulin-like growth factor 2 mRNA binding protein 3
Omim ID	608259
Gene Ontology	Hyperlink
Gene Summary	<p>The protein encoded by this gene is primarily found in the nucleolus, where it can bind to the 5' UTR of the insulin-like growth factor II leader 3 mRNA and may repress translation of insulin-like growth factor II during late development. The encoded protein contains several KH domains, which are important in RNA binding and are known to be involved in RNA synthesis and metabolism. A pseudogene exists on chromosome 7, and there are putative pseudogenes on other chromosomes. [provided by RefSeq]</p>
Other Designations	IGF II mRNA binding protein 3 IGF-II mRNA-binding protein 3 KH domain containing protein overexpressed in cancer

Disease

- [Cardiovascular Diseases](#)
- [Diabetes Mellitus](#)
- [Edema](#)
- [Genetic Predisposition to Disease](#)
- [Metabolic Syndrome X](#)
- [Obesity](#)
- [Tobacco Use Disorder](#)