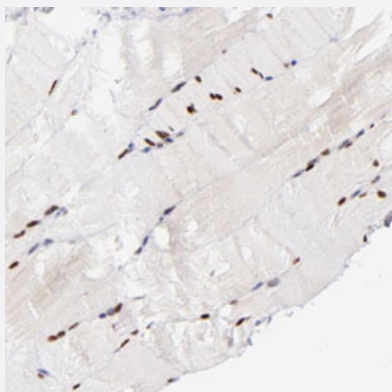


SOX6 polyclonal antibody

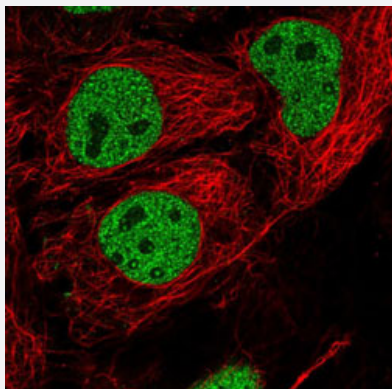
Catalog # PAB29321 Size 100 uL

Applications



Immunohistochemistry (Formalin/PFA-fixed paraffin-embedded sections)

Immunohistochemical staining of human skeletal muscle with SOX6 polyclonal antibody (Cat# PAB29321) shows strong nuclear positivity in myocytes.



Immunofluorescence

Immunofluorescent staining of human cell line CACO-2 with SOX6 polyclonal antibody (Cat# PAB29321) under 1-4 ug/mL working concentration shows positivity in nucleus but excluded from the nucleoli.

Specification

Product Description	Rabbit polyclonal antibody raised against recombinant human SOX6.
Immunogen	Recombinant protein corresponding to amino acids of human SOX6.
Sequence	TYKPGDNYPVQFIPSTMAAAAASGLSPLQLQQLYAAQLASMQVSPGAKMPSTPQPPNTAGTVSP TGIKNEKRGTSPTQVKDEAAAQPLNLSSRPKTAEPVKSPS
Host	Rabbit
Reactivity	Human

Form	Liquid
Purification	Antigen affinity purification
Isotype	IgG
Recommend Usage	Immunohistochemistry (1:50-1:200) Immunofluorescence (1-4 ug/mL) The optimal working dilution should be determined by the end user.
Storage Buffer	In PBS, pH 7.2 (40% glycerol, 0.02% sodium azide)
Storage Instruction	Store at 4°C. For long term storage store at -20°C. Aliquot to avoid repeated freezing and thawing.
Note	This product contains sodium azide: a POISONOUS AND HAZARDOUS SUBSTANCE which should be handled by trained staff only.

Applications

- Immunohistochemistry (Formalin/PFA-fixed paraffin-embedded sections)

Immunohistochemical staining of human skeletal muscle with SOX6 polyclonal antibody (Cat# PAB29321) shows strong nuclear positivity in myocytes.

- Immunofluorescence

Immunofluorescent staining of human cell line CACO-2 with SOX6 polyclonal antibody (Cat# PAB29321) under 1-4 ug/mL working concentration shows positivity in nucleus but excluded from the nucleoli.

Gene Info — SOX6

Entrez GeneID	55553
Protein Accession#	P35712
Gene Name	SOX6
Gene Alias	HSSOX6
Gene Description	SRY (sex determining region Y)-box 6
Omim ID	607257
Gene Ontology	Hyperlink

Gene Summary

This gene encodes a member of the D subfamily of sex determining region y-related transcription factors that are characterized by a conserved DNA-binding domain termed the high mobility group box and by their ability to bind the minor groove of DNA. The encoded protein is a transcriptional activator that is required for normal development of the central nervous system, chondrogenesis and maintenance of cardiac and skeletal muscle cells. The encoded protein interacts with other family members to cooperatively activate gene expression. Alternative splicing results in multiple transcript variants

Other Designations

SRY-box containing gene 6|Sox-6

Disease

- [Cardiovascular Diseases](#)
- [Carotid Artery Diseases](#)
- [Celiac Disease](#)
- [Diabetes Mellitus](#)
- [Edema](#)
- [Fractures](#)
- [Genetic Predisposition to Disease](#)
- [Obesity](#)
- [Osteoporosis](#)
- [Plaque](#)
- [Tobacco Use Disorder](#)