

MLLT3 polyclonal antibody

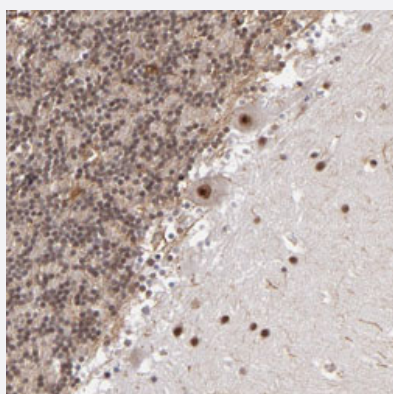
Catalog # PAB29315 Size 100 uL

Applications



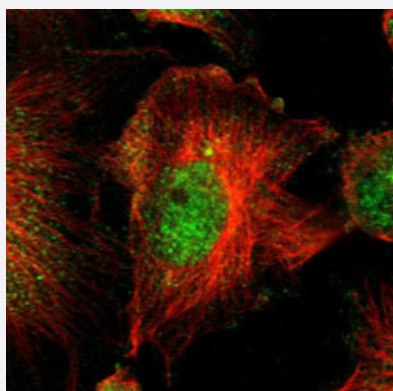
Western Blot (Transfected lysate)

Western blot analysis of Lane 1: Negative control (vector only transfected HEK293T lysate); Lane 2: Over-expression lysate (Co-expressed with a C-terminal myc-DDK tag (~3.1 kDa) in mammalian HEK293T cells) with MLLT3 polyclonal antibody (Cat# PAB29315) at 1:100-1:250 dilution.



Immunohistochemistry (Formalin/PFA-fixed paraffin-embedded sections)

Immunohistochemical staining of human cerebellum with MLLT3 polyclonal antibody (Cat# PAB29315) shows strong nuclear positivity in Purkinje cells at 1:50-1:200 dilution.



Immunofluorescence

Immunofluorescent staining of human cell line U-251 MG with MLLT3 polyclonal antibody (Cat# PAB29315) under 1-4 ug/mL working concentration shows positivity in cytoplasm and nucleus but excluded from the nucleoli.

Specification

Product Description	Rabbit polyclonal antibody raised against recombinant human MLLT3.
Immunogen	Recombinant protein corresponding to amino acids of human MLLT3.
Sequence	SSKSDSEQPSPASSSSSSSSSFTPSQTRQQGPLRSIMKDLHSDDNEEESDEVEDNDNDSEMERPVNRRGGSRRRVSLSDGSDSESSSASSPLHHEPPPLKTNNNQILEVKSPIKQSKSDKQIKNGECDKAYLDELVELHRRMLTLR
Host	Rabbit
Reactivity	Human
Form	Liquid
Purification	Antigen affinity purification
Isotype	IgG
Recommend Usage	Immunohistochemistry (1:50-1:200) Western Blot (1:100-1:250) Immunofluorescence (1-4 ug/mL) The optimal working dilution should be determined by the end user.
Storage Buffer	In PBS, pH 7.2 (40% glycerol, 0.02% sodium azide)
Storage Instruction	Store at 4°C. For long term storage store at -20°C. Aliquot to avoid repeated freezing and thawing.
Note	This product contains sodium azide: a POISONOUS AND HAZARDOUS SUBSTANCE which should be handled by trained staff only.

Applications

- Western Blot (Transfected lysate)

Western blot analysis of Lane 1: Negative control (vector only transfected HEK293T lysate); Lane 2: Over-expression lysate (Co-expressed with a C-terminal myc-DDK tag (~3.1 kDa) in mammalian HEK293T cells) with MLLT3 polyclonal antibody (Cat# PAB29315) at 1:100-1:250 dilution.

- Immunohistochemistry (Formalin/PFA-fixed paraffin-embedded sections)

Immunohistochemical staining of human cerebellum with MLLT3 polyclonal antibody (Cat# PAB29315) shows strong nuclear positivity in purkinje cells at 1:50-1:200 dilution.

- Immunofluorescence

Immunofluorescent staining of human cell line U-251 MG with MLLT3 polyclonal antibody (Cat# PAB29315) under 1-4 ug/mL working concentration shows positivity in cytoplasm and nucleus but excluded from the nucleoli.

Gene Info — MLLT3

Entrez GeneID	4300
Protein Accession#	B7Z755
Gene Name	MLLT3
Gene Alias	AF9, FLJ2035, YEATS3
Gene Description	myeloid/lymphoid or mixed-lineage leukemia (trithorax homolog, Drosophila); translocated to, 3
Omim ID	159558
Gene Ontology	Hyperlink
Gene Summary	Drosophila); translocated to
Other Designations	OTTHUMP00000021127 OTTHUMP00000045120 myeloid/lymphoid or mixed-lineage leukemia (trithorax homolog); translocated to, 3

Disease

- [Genetic Predisposition to Disease](#)
- [Lung Neoplasms](#)
- [Tobacco Use Disorder](#)