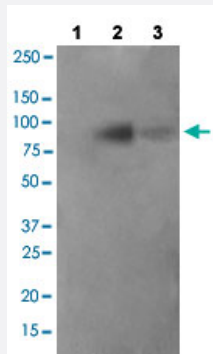


FER (phospho Y402) polyclonal antibody

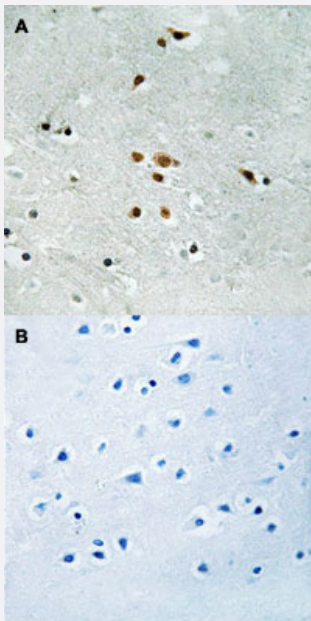
Catalog # PAB29298 Size 100 uL

Applications



Western Blot (Cell lysate)

Western blot analysis of Lane 1: antigen-specific peptide treated JK cells, Lane 2: JK cells, Lane 3: COS-7 cells with FER (phospho Y402) polyclonal antibody (Cat# PAB29298) at 1:500-1:1000 dilution.



Immunohistochemistry (Formalin/PFA-fixed paraffin-embedded sections)

Immunohistochemical staining (Formalin-fixed paraffin-embedded sections) of human brain tissue with FER (phospho Y402) polyclonal antibody (Cat# PAB29298) without blocking peptide (A) or preincubated with blocking peptide (B) under 1:50-1:100 dilution.

Specification

Product Description

Rabbit polyclonal antibody raised against synthetic phosphopeptide of human FER.

Immunogen

Synthetic phosphopeptide (conjugated with KLH) corresponding to residues surrounding Y402 of human FER.

Host	Rabbit
Theoretical MW (kDa)	85
Reactivity	Human
Specificity	FER (phospho Y402) polyclonal antibody detects endogenous levels of human FER only when phosphorylated at tyrosine 402.
Form	Liquid
Purification	Affinity Chromatography
Recommend Usage	Immunohistochemistry (1:50~1:100) Western Blot (1:500~1:1000) The optimal working dilution should be determined by the end user.
Storage Buffer	In PBS (without Mg^{2+} and Ca^{2+}), 150 mM NaCl, pH 7.4 (50% glycerol, 0.02% sodium azide)
Storage Instruction	Store at -20°C. Aliquot to avoid repeated freezing and thawing.
Note	This product contains sodium azide: a POISONOUS AND HAZARDOUS SUBSTANCE which should be handled by trained staff only.

Applications

- Western Blot (Cell lysate)

Western blot analysis of Lane 1: antigen-specific peptide treated JK cells, Lane 2: JK cells cells, Lane 3: COS-7 cells with FER (phospho Y402) polyclonal antibody (Cat# PAB29298) at 1:500-1:1000 dilution.

- Immunohistochemistry (Formalin/PFA-fixed paraffin-embedded sections)

Immunohistochemical staining (Formalin-fixed paraffin-embedded sections) of human brain tissue with FER (phospho Y402) polyclonal antibody (Cat# PAB29298) without blocking peptide (A) or preincubated with blocking peptide (B) under 1:50-1:100 dilution.

Gene Info — FER

Entrez GeneID	2241
Protein Accession#	P16591
Gene Name	FER
Gene Alias	TYK3

Gene Description	fer (fps/fes related) tyrosine kinase
Omim ID	176942
Gene Ontology	Hyperlink
Gene Summary	Fer protein is a member of the FPS/FES family of nontransmembrane receptor tyrosine kinases. It regulates cell-cell adhesion and mediates signaling from the cell surface to the cytoskeleton via growth factor receptors. [provided by RefSeq]
Other Designations	phosphoprotein NCP94

Pathway

- [Adherens junction](#)

Disease

- [Cardiovascular Diseases](#)
- [Diabetes Mellitus](#)
- [Edema](#)