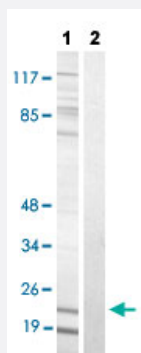


# STMN1 (phospho S63) polyclonal antibody

Catalog # PAB29293

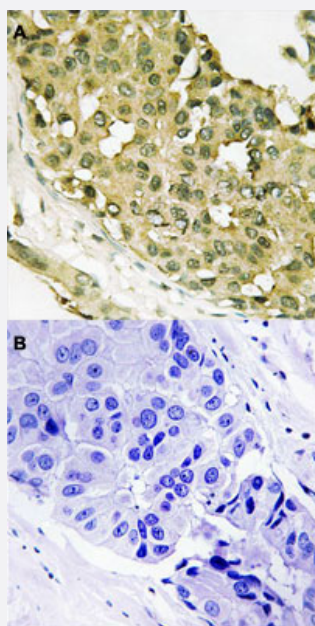
Size 100 uL

## Applications



### Western Blot (Cell lysate)

Western blot analysis of Lane 1: nocodazole treated COS-7 cells, Lane 2: antigen-specific peptide treated COS-7 cells with STMN1 (phospho S63) polyclonal antibody (Cat# PAB29293) at 1:500-1:1000 dilution.



### Immunohistochemistry (Formalin/PFA-fixed paraffin-embedded sections)

Immunohistochemical staining (Formalin-fixed paraffin-embedded sections) of human breast cancer tissue with STMN1 (phospho S63) polyclonal antibody (Cat# PAB29293) without blocking peptide (A) or preincubated with blocking peptide (B) under 1:50-1:100 dilution.

## Specification

### Product Description

Rabbit polyclonal antibody raised against synthetic phosphopeptide of human STMN1.

### Immunogen

Synthetic phosphopeptide (conjugated with KLH) corresponding to residues surrounding S63 of human STMN1.

Host	Rabbit
Theoretical MW (kDa)	22
Reactivity	Human, Mouse
Specificity	STMN1 (phospho S63) polyclonal antibody detects endogenous levels of human STMN1 only when p hosphorylated at serine 63.
Form	Liquid
Purification	Affinity Chromatography
Recommend Usage	Immunohistochemistry (1:50~1:100) Western Blot (1:500~1:1000) The optimal working dilution should be determined by the end user.
Storage Buffer	In PBS (without $Mg^{2+}$ and $Ca^{2+}$ ), 150 mM NaCl, pH 7.4 (50% glycerol, 0.02% sodium azide)
Storage Instruction	Store at -20°C. Aliquot to avoid repeated freezing and thawing.
Note	This product contains sodium azide: a POISONOUS AND HAZARDOUS SUBSTANCE which shoul d be handled by trained staff only.

## Applications

- Western Blot (Cell lysate)

Western blot analysis of Lane 1: nocodazole treated COS-7 cells, Lane 2: antigen-specific peptide treated COS-7 cells with STMN1 (phospho S63) polyclonal antibody (Cat# PAB29293) at 1:500-1:1000 dilution.

- Immunohistochemistry (Formalin/PFA-fixed paraffin-embedded sections)

Immunohistochemical staining (Formalin-fixed paraffin-embedded sections) of human breast cancer tissue with STMN1 (phospho S63) polyclonal antibody (Cat# PAB29293) without blocking peptide (A) or preincubated with blocking peptide (B) under 1:50-1:100 dilution.

## Gene Info — STMN1

Entrez GeneID	<a href="#">3925</a>
Protein Accession#	<a href="#">P16949</a>
Gene Name	STMN1
Gene Alias	LAP18, Lag, OP18, PP17, PP19, PR22, SMN

Gene Description	stathmin 1/oncoprotein 18
Omim ID	<a href="#">151442</a>
Gene Ontology	<a href="#">Hyperlink</a>
Gene Summary	This gene belongs to the stathmin family of genes. It encodes a ubiquitous cytosolic phosphoprotein proposed to function as an intracellular relay integrating regulatory signals of the cellular environment. The encoded protein is involved in the regulation of the microtubule filament system by destabilizing microtubules. It prevents assembly and promotes disassembly of microtubules. Multiple transcript variants encoding different isoforms have been found for this gene. [provided by RefSeq]
Other Designations	OTTHUMP00000008527 OTTHUMP00000008528 OTTHUMP00000008530 leukemia-associated phosphoprotein p18 metablastin oncoprotein 18 phosphoprotein 19 prosofin stathmin 1

## Pathway

- [MAPK signaling pathway](#)

## Disease

- [Anorexia Nervosa](#)
- [Bulimia](#)
- [Genetic Predisposition to Disease](#)
- [Startle Reaction](#)