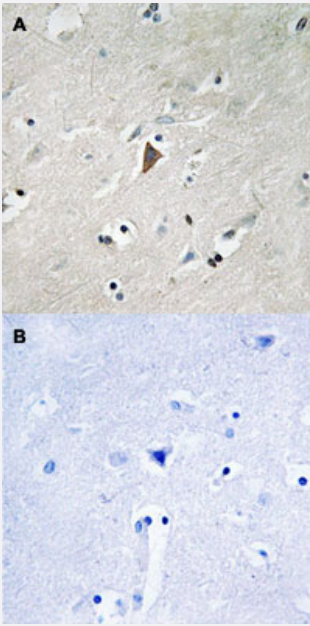


PDPK1 (phospho Y9) polyclonal antibody

Catalog # PAB29292 Size 100 uL

Applications



Immunohistochemistry (Formalin/PFA-fixed paraffin-embedded sections)

Immunohistochemical staining (Formalin-fixed paraffin-embedded sections) of human brain tissue with PDPK1 (phospho Y9) polyclonal antibody (Cat# PAB29292) without blocking peptide (A) or preincubated with blocking peptide (B) under 1:50-1:100 dilution.

Specification

Product Description	Rabbit polyclonal antibody raised against synthetic phosphopeptide of human PDPK1.
Immunogen	Synthetic phosphopeptide (conjugated with KLH) corresponding to residues surrounding Y9 of human PDPK1.
Host	Rabbit
Theoretical MW (kDa)	63
Reactivity	Human, Mouse, Rat
Specificity	PDPK1 (phospho Y9) polyclonal antibody detects endogenous levels of human PDPK1 only when phosphorylated at tyrosine 9.
Form	Liquid

Purification	Affinity Chromatography
Recommend Usage	Immunohistochemistry (1:50~1:100) The optimal working dilution should be determined by the end user.
Storage Buffer	In PBS (without Mg ²⁺ and Ca ²⁺), 150 mM NaCl, pH 7.4 (50% glycerol, 0.02% sodium azide)
Storage Instruction	Store at -20°C. Aliquot to avoid repeated freezing and thawing.
Note	This product contains sodium azide: a POISONOUS AND HAZARDOUS SUBSTANCE which should be handled by trained staff only.

Applications

- Immunohistochemistry (Formalin/PFA-fixed paraffin-embedded sections)

Immunohistochemical staining (Formalin-fixed paraffin-embedded sections) of human brain tissue with PDPK1 (phospho Y9) polyclonal antibody (Cat# PAB29292) without blocking peptide (A) or preincubated with blocking peptide (B) under 1:50-1:100 dilution.

Gene Info — PDPK1

Entrez GeneID	5170
Protein Accession#	O15530
Gene Name	PDPK1
Gene Alias	MGC20087, MGC35290, PDK1, PRO0461
Gene Description	3-phosphoinositide dependent protein kinase-1
Omim ID	605213
Gene Ontology	Hyperlink
Other Designations	PkB kinase like gene 1 PkB-like 1 protein kinase

Pathway

- [Endometrial cancer](#)
- [Focal adhesion](#)

- [Insulin signaling pathway](#)
- [mTOR signaling pathway](#)
- [Non-small cell lung cancer](#)
- [PPAR signaling pathway](#)
- [Prostate cancer](#)

Disease

- [Adenocarcinoma](#)
- [Thyroid Neoplasms](#)