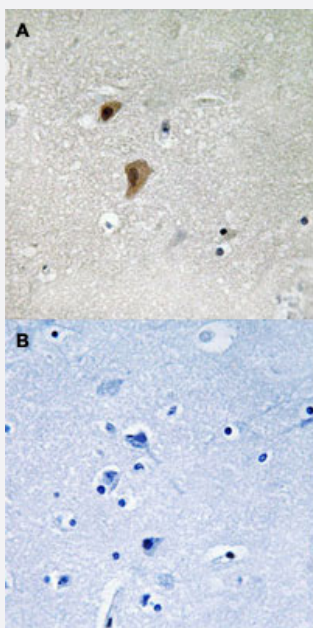


HSF1 (phospho T142) polyclonal antibody

Catalog # PAB29289

Size 100 uL

Applications



Immunohistochemistry (Formalin/PFA-fixed paraffin-embedded sections)

Immunohistochemical staining (Formalin-fixed paraffin-embedded sections) of human brain tissue with HSF1 (phospho T142) polyclonal antibody (Cat# PAB29289) without blocking peptide (A) or preincubated with blocking peptide (B) under 1:50-1:100 dilution.

Specification

Product Description	Rabbit polyclonal antibody raised against synthetic phosphopeptide of human HSF1.
Immunogen	Synthetic phosphopeptide (conjugated with KLH) corresponding to residues surrounding T142 of human HSF1.
Host	Rabbit
Theoretical MW (kDa)	57
Reactivity	Human, Mouse, Rat
Specificity	HSF1 (phospho T142) polyclonal antibody detects endogenous levels of human HSF1 only when phosphorylated at threonine 142.
Form	Liquid

Purification	Affinity Chromatography
Recommend Usage	Immunohistochemistry (1:50~1:100) The optimal working dilution should be determined by the end user.
Storage Buffer	In PBS (without Mg ²⁺ and Ca ²⁺), 150 mM NaCl, pH 7.4 (50% glycerol, 0.02% sodium azide)
Storage Instruction	Store at -20°C. Aliquot to avoid repeated freezing and thawing.
Note	This product contains sodium azide: a POISONOUS AND HAZARDOUS SUBSTANCE which should be handled by trained staff only.

Applications

- Immunohistochemistry (Formalin/PFA-fixed paraffin-embedded sections)

Immunohistochemical staining (Formalin-fixed paraffin-embedded sections) of human brain tissue with HSF1 (phospho T142) polyclonal antibody (Cat# PAB29289) without blocking peptide (A) or preincubated with blocking peptide (B) under 1:50-1:100 dilution.

Gene Info — HSF1

Entrez GeneID	3297
Protein Accession#	Q00613
Gene Name	HSF1
Gene Alias	HSTF1
Gene Description	heat shock transcription factor 1
Omim ID	140580
Gene Ontology	Hyperlink
Gene Summary	The product of this gene is a heat-shock transcription factor. Transcription of heat-shock genes is rapidly induced after temperature stress. Hsp90, by itself and/or associated with multichaperone complexes, is a major repressor of this gene. [provided by RefSeq]
Other Designations	-