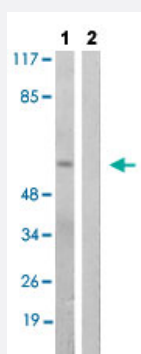


PAK1 (phospho S199) polyclonal antibody

Catalog # PAB29282

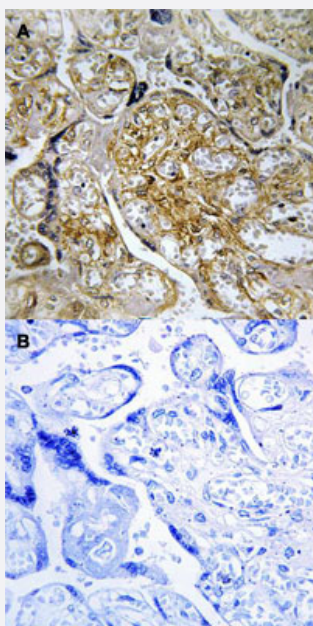
Size 100 uL

Applications



Western Blot (Cell lysate)

Western blot analysis of Lane 1: starved treated LoVo cells, Lane 2: antigen-specific peptide treated LoVo cells with PAK1 (phospho S199) polyclonal antibody (Cat# PAB29282) at 1:500-1:1000 dilution.



Immunohistochemistry (Formalin/PFA-fixed paraffin-embedded sections)

Immunohistochemical staining (Formalin-fixed paraffin-embedded sections) of human placenta tissue with PAK1 (phospho S199) polyclonal antibody (Cat# PAB29282) without blocking peptide (A) or preincubated with blocking peptide (B) under 1:50-1:100 dilution.

Specification

Product Description

Rabbit polyclonal antibody raised against synthetic phosphopeptide of human PAK1.

Immunogen

Synthetic phosphopeptide (conjugated with KLH) corresponding to residues surrounding S199 of human PAK1.

Host	Rabbit
Theoretical MW (kDa)	61
Reactivity	Human, Mouse, Rat
Specificity	PAK1 (phospho S199) polyclonal antibody detects endogenous levels of human PAK1/2 only when phosphorylated at serine 199.
Form	Liquid
Purification	Affinity Chromatography
Recommend Usage	Immunohistochemistry (1:50~1:100) Western Blot (1:500~1:1000) The optimal working dilution should be determined by the end user.
Storage Buffer	In PBS (without Mg^{2+} and Ca^{2+}), 150 mM NaCl, pH 7.4 (50% glycerol, 0.02% sodium azide)
Storage Instruction	Store at -20°C. Aliquot to avoid repeated freezing and thawing.
Note	This product contains sodium azide: a POISONOUS AND HAZARDOUS SUBSTANCE which should be handled by trained staff only.

Applications

- Western Blot (Cell lysate)

Western blot analysis of Lane 1: starved treated LoVo cells, Lane 2: antigen-specific peptide treated LoVo cells with PAK1 (phospho S199) polyclonal antibody (Cat# PAB29282) at 1:500-1:1000 dilution.

- Immunohistochemistry (Formalin/PFA-fixed paraffin-embedded sections)

Immunohistochemical staining (Formalin-fixed paraffin-embedded sections) of human placenta tissue with PAK1 (phospho S199) polyclonal antibody (Cat# PAB29282) without blocking peptide (A) or preincubated with blocking peptide (B) under 1:50-1:100 dilution.

Gene Info — PAK1

Entrez GeneID	5058
Protein Accession#	Q13153
Gene Name	PAK1
Gene Alias	MGC130000, MGC130001, PAKalpha

Gene Description	p21 protein (Cdc42/Rac)-activated kinase 1
Omim ID	602590
Gene Ontology	Hyperlink
Gene Summary	PAK proteins are critical effectors that link RhoGTPases to cytoskeleton reorganization and nuclear signaling. PAK proteins, a family of serine/threonine p21-activating kinases, include PAK1, PAK2, PAK3 and PAK4. These proteins serve as targets for the small GTP binding proteins Cdc42 and Rac and have been implicated in a wide range of biological activities. PAK1 regulates cell motility and morphology. Alternatively spliced transcript variants encoding different isoforms have been found for this gene. [provided by RefSeq]
Other Designations	STE20 homolog, yeast p21-activated kinase 1 p21/Cdc42/Rac1-activated kinase 1 (STE20 homolog, yeast) p21/Cdc42/Rac1-activated kinase 1 (yeast Ste20-related)

Pathway

- [Axon guidance](#)
- [Chemokine signaling pathway](#)
- [Epithelial cell signaling in Helicobacter pylori infection](#)
- [ErbB signaling pathway](#)
- [Fc gamma R-mediated phagocytosis](#)
- [Focal adhesion](#)
- [MAPK signaling pathway](#)
- [Natural killer cell mediated cytotoxicity](#)
- [Regulation of actin cytoskeleton](#)
- [Renal cell carcinoma](#)
- [T cell receptor signaling pathway](#)

Disease

- [Carcinoma](#)
- [Esophageal Neoplasms](#)
- [HIV Infections](#)

- [Tobacco Use Disorder](#)