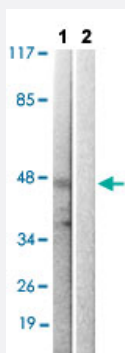


ARRB1 (phospho S412) polyclonal antibody

Catalog # PAB29259

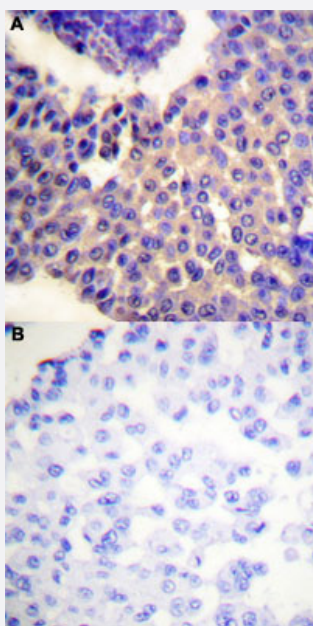
Size 100 uL

Applications



Western Blot (Cell lysate)

Western blot analysis of Lane 1: Etoposide treated COS-7 cells, Lane 2: antigen-specific peptide treated COS-7 cells with ARRB1 (phospho S412) polyclonal antibody (Cat# PAB29259) at 1:500-1:1000 dilution.



Immunohistochemistry (Formalin/PFA-fixed paraffin-embedded sections)

Immunohistochemical staining (Formalin-fixed paraffin-embedded sections) of human breast cancer tissue with ARRB1 (phospho S412) polyclonal antibody (Cat# PAB29259) without blocking peptide (A) or preincubated with blocking peptide (B) under 1:50-1:100 dilution.

Specification

Product Description

Rabbit polyclonal antibody raised against synthetic phosphopeptide of human ARRB1.

Immunogen

Synthetic phosphopeptide (conjugated with KLH) corresponding to residues surrounding S412 of human ARRB1.

Host	Rabbit
Theoretical MW (kDa)	50
Reactivity	Human, Mouse
Specificity	ARRB1 (phospho S412) polyclonal antibody detects endogenous levels of human ARRB1 only when phosphorylated at serine 412.
Form	Liquid
Purification	Affinity Chromatography
Recommend Usage	Immunohistochemistry (1:50~1:100) Western Blot (1:500~1:1000) The optimal working dilution should be determined by the end user.
Storage Buffer	In PBS (without Mg^{2+} and Ca^{2+}), 150 mM NaCl, pH 7.4 (50% glycerol, 0.02% sodium azide)
Storage Instruction	Store at -20°C. Aliquot to avoid repeated freezing and thawing.
Note	This product contains sodium azide: a POISONOUS AND HAZARDOUS SUBSTANCE which should be handled by trained staff only.

Applications

- Western Blot (Cell lysate)

Western blot analysis of Lane 1: Etoposide treated COS-7 cells, Lane 2: antigen-specific peptide treated COS-7 cells with ARRB1 (phospho S412) polyclonal antibody (Cat# PAB29259) at 1:500-1:1000 dilution.

- Immunohistochemistry (Formalin/PFA-fixed paraffin-embedded sections)

Immunohistochemical staining (Formalin-fixed paraffin-embedded sections) of human breast cancer tissue with ARRB1 (phospho S412) polyclonal antibody (Cat# PAB29259) without blocking peptide (A) or preincubated with blocking peptide (B) under 1:50-1:100 dilution.

Gene Info — ARRB1

Entrez GeneID	408
Protein Accession#	P49407
Gene Name	ARRB1
Gene Alias	ARB1, ARR1

Gene Description	arrestin, beta 1
Omim ID	107940
Gene Ontology	Hyperlink
Gene Summary	<p>Members of arrestin/beta-arrestin protein family are thought to participate in agonist-mediated desensitization of G-protein-coupled receptors and cause specific dampening of cellular responses to stimuli such as hormones, neurotransmitters, or sensory signals. Arrestin beta 1 is a cytosolic protein and acts as a cofactor in the beta-adrenergic receptor kinase (BARK) mediated desensitization of beta-adrenergic receptors. Besides the central nervous system, it is expressed at high levels in peripheral blood leukocytes, and thus the BARK/beta-arrestin system is believed to play a major role in regulating receptor-mediated immune functions. Alternatively spliced transcripts encoding different isoforms of arrestin beta 1 have been described, however, their exact functions are not known. [provided by RefSeq]</p>
Other Designations	arrestin 2 arrestin beta 1

Pathway

- [Chemokine signaling pathway](#)
- [Endocytosis](#)
- [MAPK signaling pathway](#)

Disease

- [Asthma](#)
- [Genetic Predisposition to Disease](#)
- [Tobacco Use Disorder](#)