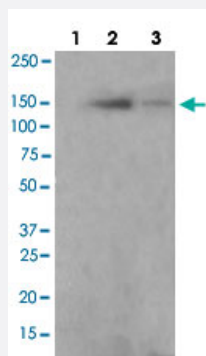


BCAR1 (phospho Y410) polyclonal antibody

Catalog # PAB29258

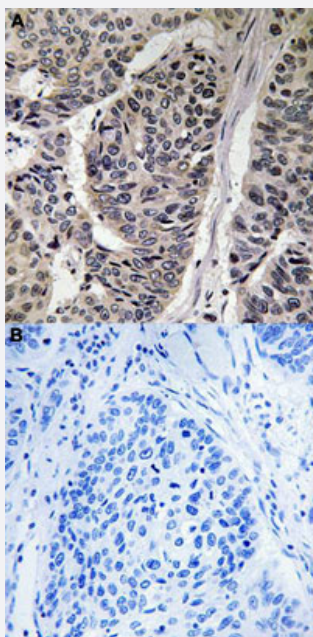
Size 100 uL

Applications



Western Blot (Cell lysate)

Western blot analysis of Lane 1: antigen-specific peptide treated K562 cells, Lane 2: K562 cells, Lane 3: 3T3 cells with BCAR1 (phospho Y410) polyclonal antibody (Cat# PAB29258) at 1:500-1:1000 dilution.



Immunohistochemistry (Formalin/PFA-fixed paraffin-embedded sections)

Immunohistochemical staining (Formalin-fixed paraffin-embedded sections) of human breast cancer tissue with BCAR1 (phospho Y410) polyclonal antibody (Cat# PAB29258) without blocking peptide (A) or preincubated with blocking peptide (B) under 1:50-1:100 dilution.

Specification

Product Description

Rabbit polyclonal antibody raised against synthetic phosphopeptide of human BCAR1.

Immunogen

Synthetic phosphopeptide (conjugated with KLH) corresponding to residues surrounding Y410 of human BCAR1.

Host	Rabbit
Theoretical MW (kDa)	130
Reactivity	Human
Specificity	BCAR1 (phospho Y410) polyclonal antibody detects endogenous levels of human BCAR1 only when phosphorylated at tyrosine 410.
Form	Liquid
Purification	Affinity Chromatography
Recommend Usage	Immunohistochemistry (1:50~1:100) Western Blot (1:500~1:1000) The optimal working dilution should be determined by the end user.
Storage Buffer	In PBS (without Mg^{2+} and Ca^{2+}), 150 mM NaCl, pH 7.4 (50% glycerol, 0.02% sodium azide)
Storage Instruction	Store at -20°C. Aliquot to avoid repeated freezing and thawing.
Note	This product contains sodium azide: a POISONOUS AND HAZARDOUS SUBSTANCE which should be handled by trained staff only.

Applications

- Western Blot (Cell lysate)

Western blot analysis of Lane 1: antigen-specific peptide treated K562 cells, Lane 2: K562 cells, Lane 3: 3T3 cells with BCAR1 (phospho Y410) polyclonal antibody (Cat# PAB29258) at 1:500-1:1000 dilution.

- Immunohistochemistry (Formalin/PFA-fixed paraffin-embedded sections)

Immunohistochemical staining (Formalin-fixed paraffin-embedded sections) of human breast cancer tissue with BCAR1 (phospho Y410) polyclonal antibody (Cat# PAB29258) without blocking peptide (A) or preincubated with blocking peptide (B) under 1:50-1:100 dilution.

Gene Info — BCAR1

Entrez GeneID	9564
Protein Accession#	P56945
Gene Name	BCAR1
Gene Alias	CAS, CAS1, CASS1, CRKAS, P130Cas

Gene Description	breast cancer anti-estrogen resistance 1
Omim ID	602941
Gene Ontology	Hyperlink
Gene Summary	BCAR1, or CAS, is an Src (MIM 190090) family kinase substrate involved in various cellular events, including migration, survival, transformation, and invasion (Sawada et al., 2006 [PubMed 17129785]).[supplied by OMIM]
Other Designations	Cas scaffolding protein family member 1 Crk-associated substrate p130Cas

Pathway

- [Chemokine signaling pathway](#)
- [Focal adhesion](#)
- [Leukocyte transendothelial migration](#)
- [Regulation of actin cytoskeleton](#)

Disease

- [Genetic Predisposition to Disease](#)