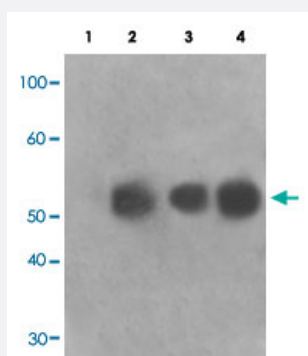


# TOB1 (phospho S164) polyclonal antibody

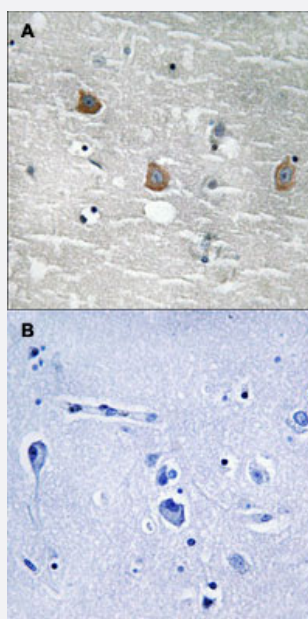
Catalog # PAB29253      Size 100 uL

## Applications



### Western Blot (Cell lysate)

Western blot analysis of Lane 1: antigen-specific peptide treated HeLa cells, Lane 2: HeLa cells, Lane 3: A549 cells, Lane 4: HepG2 cells with TOB1 (phospho S164) polyclonal antibody (Cat # PAB29253) at 1:500-1000 dilution.



### Immunohistochemistry (Formalin/PFA-fixed paraffin-embedded sections)

Immunohistochemical staining of human brain tissue by TOB1 (phospho S164) polyclonal antibody (Cat # PAB29253) without blocking peptide (A) or preincubated with blocking peptide (B) under 1:50-1:100 dilution.

## Specification

### Product Description

Rabbit polyclonal antibody raised against synthetic phosphopeptide of human TOB1.

### Immunogen

Synthetic phosphopeptide (conjugated with KLH) corresponding to residues surrounding S164 of human TOB1.

Host	Rabbit
Theoretical MW (kDa)	40
Reactivity	Human, Mouse, Rat
Specificity	This antibody detects endogenous levels of TOB1 only when phosphorylated at serine 164.
Form	Liquid
Purification	Affinity purification
Recommend Usage	Immunohistochemistry (1:50-1:100) Western Blot (1:500-1000) The optimal working dilution should be determined by the end user.
Storage Buffer	In PBS, pH 7.4 (without $Mg^{2+}$ and $Ca^{2+}$ ), (50% glycerol, 0.02% sodium azide)
Storage Instruction	Store at -20°C. Avoid repeated freezing and thawing.

## Applications

- Western Blot (Cell lysate)

Western blot analysis of Lane 1: antigen-specific peptide treated Hela cells, Lane 2: HeLa cells, Lane 3: A549 cells, Lane 4: HepG2 cells with TOB1 (phospho S164) polyclonal antibody (Cat # PAB29253) at 1:500-1000 dilution.

- Immunohistochemistry (Formalin/PFA-fixed paraffin-embedded sections)

Immunohistochemical staining of human brain tissue by TOB1 (phospho S164) polyclonal antibody (Cat # PAB29253) without blocking peptide (A) or preincubated with blocking peptide (B) under 1:50-1:100 dilution.

## Gene Info — TOB1

Entrez GeneID	<a href="#">10140</a>
Protein Accession#	<a href="#">P50616</a>
Gene Name	TOB1
Gene Alias	APRO6, MGC104792, MGC34446, PIG49, TOB, TROB, TROB1
Gene Description	transducer of ERBB2, 1
Omim ID	<a href="#">605523</a>

**Gene Ontology**[Hyperlink](#)**Gene Summary**

This gene encodes a member of the tob/btg1 family of anti-proliferative proteins that have the potential to regulate cell growth. When exogenously expressed, this protein suppresses cell growth in tissue culture. The protein undergoes phosphorylation by a serine/threonine kinase, 90 kDa ribosomal S6 kinase. Interactions of this protein with the v-erb-b2 erythroblastic leukemia viral oncogene homolog 2 gene product p185 interferes with growth suppression. This protein inhibits T cell proliferation and transcription of cytokines and cyclins. The protein interacts with both mothers against decapentaplegic Drosophila homolog 2 and 4 to enhance their DNA binding activity. This interaction inhibits interleukin 2 transcription in T cells. [provided by RefSeq]

**Other Designations**

transducer of erbB-2