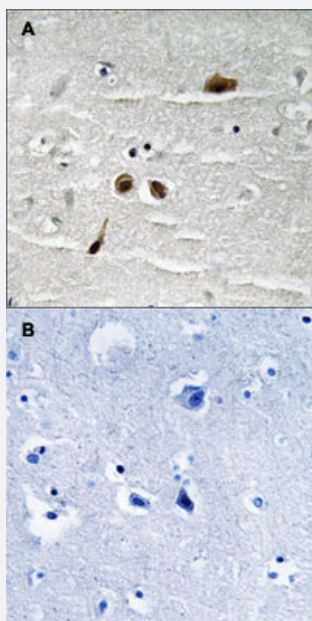


MDC1 (phospho S513) polyclonal antibody

Catalog # PAB29247 Size 100 uL

Applications



Immunohistochemistry (Formalin/PFA-fixed paraffin-embedded sections)

Immunohistochemical staining of human brain tissue by MDC1 (phospho S513) polyclonal antibody (Cat # PAB29247) without blocking peptide (A) or preincubated with blocking peptide (B) under 1:50-1:100 dilution.

Specification

Product Description	Rabbit polyclonal antibody raised against synthetic phosphopeptide of human MDC1.
Immunogen	Synthetic phosphopeptide (conjugated with KLH) corresponding to residues surrounding S513 of human MDC1.
Host	Rabbit
Theoretical MW (kDa)	226
Reactivity	Human
Specificity	This antibody detects endogenous levels of MDC1 only when phosphorylated at serine 513.
Form	Liquid

Purification	Affinity purification
Recommend Usage	Immunohistochemistry (1:50-1:100) The optimal working dilution should be determined by the end user.
Storage Buffer	In PBS, pH 7.4 (without Mg ²⁺ and Ca ²⁺), (50% glycerol, 0.02% sodium azide)
Storage Instruction	Store at -20°C. Avoid repeated freezing and thawing.

Applications

- Immunohistochemistry (Formalin/PFA-fixed paraffin-embedded sections)

Immunohistochemical staining of human brain tissue by MDC1 (phospho S513) polyclonal antibody (Cat # PAB29247) without blocking peptide (A) or preincubated with blocking peptide (B) under 1:50-1:100 dilution.

Gene Info — MDC1

Entrez GeneID	9656
Protein Accession#	Q14676
Gene Name	MDC1
Gene Alias	DKFZp781A0122, KIAA0170, MGC166888, NFBD1
Gene Description	mediator of DNA damage checkpoint 1
Omim ID	607593
Gene Ontology	Hyperlink
Gene Summary	The protein encoded by this gene contains an N-terminal forkhead domain, two BRCA1 C-terminal (BRCT) motifs and a central domain with 13 repetitions of an approximately 41-amino acid sequence. The encoded protein is required to activate the intra-S phase and G2/M phase cell cycle checkpoints in response to DNA damage. This nuclear protein interacts with phosphorylated histone H2AX near sites of DNA double-strand breaks through its BRCT motifs, and facilitates recruitment of the ATM kinase and meiotic recombination 11 protein complex to DNA damage foci. [provided by RefSeq]
Other Designations	OTTHUMP00000029090 homologue to Drosophila photoreceptor protein calphoton nuclear factor with BRCT domains 1

Disease

- [Abortion](#)
- [Adenocarcinoma](#)
- [Genetic Predisposition to Disease](#)
- [Lupus Erythematosus](#)
- [Pancreatic Neoplasms](#)
- [Prostate cancer](#)
- [Prostatic Neoplasms](#)