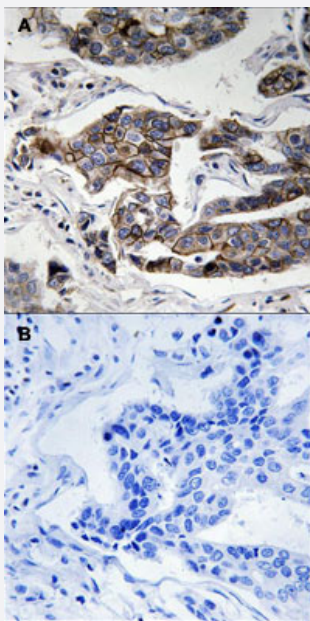


CCDC88A (phospho S1417) polyclonal antibody

Catalog # PAB29246

Size 100 uL

Applications



Immunohistochemistry (Formalin/PFA-fixed paraffin-embedded sections)

Immunohistochemical staining of human breast carcinoma tissue by CCDC88A (phospho S1417) polyclonal antibody (Cat # PAB29246) without blocking peptide (A) or preincubated with blocking peptide (B) under 1:50-1:100 dilution.

Specification

Product Description	Rabbit polyclonal antibody raised against synthetic phosphopeptide of human CCDC88A.
Immunogen	Synthetic phosphopeptide (conjugated with KLH) corresponding to residues surrounding S1417 of human CCDC88A.
Host	Rabbit
Theoretical MW (kDa)	216
Reactivity	Human, Mouse
Specificity	This antibody detects endogenous levels of CCDC88A only when phosphorylated at serine 1417.
Form	Liquid

Purification	Affinity purification
Recommend Usage	Immunohistochemistry (1:50-1:100) The optimal working dilution should be determined by the end user.
Storage Buffer	In PBS, pH 7.4 (without Mg ²⁺ and Ca ²⁺), (50% glycerol, 0.02% sodium azide)
Storage Instruction	Store at -20°C. Avoid repeated freezing and thawing.

Applications

- Immunohistochemistry (Formalin/PFA-fixed paraffin-embedded sections)

Immunohistochemical staining of human breast carcinoma tissue by CCDC88A (phospho S1417) polyclonal antibody (Cat # PAB29246) without blocking peptide (A) or preincubated with blocking peptide (B) under 1:50-1:100 dilution.

Gene Info — CCDC88A

Entrez GeneID	55704
Protein Accession#	Q3V6T2
Gene Name	CCDC88A
Gene Alias	APE, DKFZp686D0630, GIRDIN, GIV, GRDN, HkRP1, KIAA1212
Gene Description	coiled-coil domain containing 88A
Omim ID	609736
Gene Ontology	Hyperlink
Other Designations	AKT-phosphorylation enhancer Galpha-interacting vesicle-associated protein G{alpha}-interacting vesicle-associated protein Hook-related protein 1

Disease

- [Tobacco Use Disorder](#)