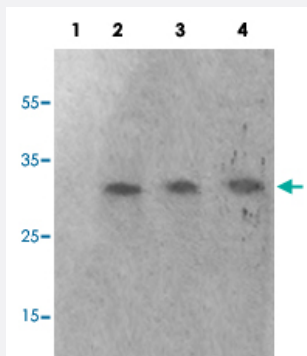


GAB2 (phospho S623) polyclonal antibody

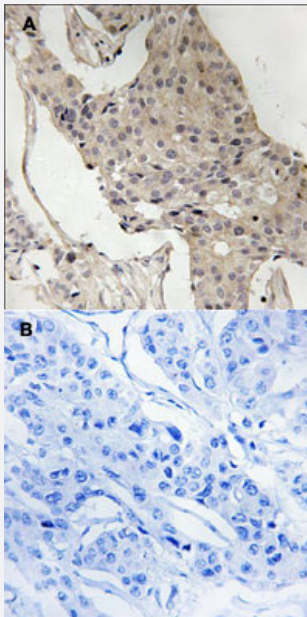
Catalog # PAB29245 Size 100 uL

Applications



Western Blot (Cell lysate)

Western blot analysis of Lane 1: antigen-specific peptide treated 293 cells, Lane 2: 293 cells, Lane 3: HeLa cells, Lane 4: HepG2 cells with GAB2 (phospho S623) polyclonal antibody (Cat # PAB29245) at 1:500-1000 dilution.



Immunohistochemistry (Formalin/PFA-fixed paraffin-embedded sections)

Immunohistochemical staining of human breast carcinoma tissue by GAB2 (phospho S623) polyclonal antibody (Cat # PAB29245) without blocking peptide (A) or preincubated with blocking peptide (B) under 1:50-1:100 dilution.

Specification

Product Description

Rabbit polyclonal antibody raised against synthetic phosphopeptide of human GAB2.

Immunogen

Synthetic phosphopeptide (conjugated with KLH) corresponding to residues surrounding S623 of human GAB2.

Host	Rabbit
Theoretical MW (kDa)	80
Reactivity	Human, Mouse
Specificity	This antibody detects endogenous levels of GAB2 only when phosphorylated at serine 623.
Form	Liquid
Purification	Affinity purification
Recommend Usage	Immunohistochemistry (1:50-1:100) Western Blot (1:500-1000) The optimal working dilution should be determined by the end user.
Storage Buffer	In PBS, pH 7.4 (without Mg ²⁺ and Ca ²⁺), (50% glycerol, 0.02% sodium azide)
Storage Instruction	Store at -20°C. Avoid repeated freezing and thawing.

Applications

- Western Blot (Cell lysate)

Western blot analysis of Lane 1: antigen-specific peptide treated 293 cells, Lane 2: 293 cells, Lane 3: HeLa cells, Lane 4: HepG2 cells with GAB2 (phospho S623) polyclonal antibody (Cat # PAB29245) at 1:500-1000 dilution.

- Immunohistochemistry (Formalin/PFA-fixed paraffin-embedded sections)

Immunohistochemical staining of human breast carcinoma tissue by GAB2 (phospho S623) polyclonal antibody (Cat # PAB29245) without blocking peptide (A) or preincubated with blocking peptide (B) under 1:50-1:100 dilution.

Gene Info — GAB2

Entrez GeneID	9846
Protein Accession#	Q9UQC2
Gene Name	GAB2
Gene Alias	KIAA0571
Gene Description	GRB2-associated binding protein 2
Omim ID	606203

Gene Ontology

[Hyperlink](#)

Gene Summary

This gene is a member of the GRB2-associated binding protein (GAB) gene family and is similar to the GAB1 gene. These proteins contain pleckstrin homology (PH) domain, and bind SHP2 tyrosine phosphatase and GRB2 adapter protein. They act as adapters for transmitting various signals in response to stimuli through cytokine and growth factor receptors, and T- and B-cell antigen receptors. The protein encoded by this gene is the principal activator of phosphatidylinositol-3 kinase in response to activation of the high affinity IgE receptor. Two alternatively spliced transcripts encoding different isoforms have been described for this gene. [provided by RefSeq]

Other Designations

Grb2-associated binder 2

Pathway

- [Chronic myeloid leukemia](#)
- [Fc epsilon RI signaling pathway](#)
- [Fc gamma R-mediated phagocytosis](#)

Disease

- [Alzheimer disease](#)
- [Cardiovascular Diseases](#)
- [Cognition](#)
- [Diabetes Mellitus](#)
- [Edema](#)
- [Genetic Predisposition to Disease](#)
- [Obesity](#)
- [Psychiatric Status Rating Scales](#)