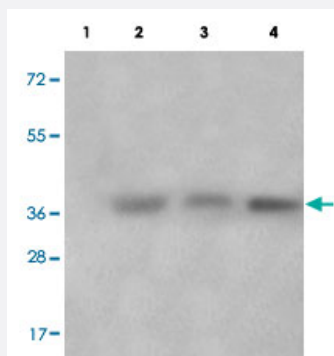


CCNC (phospho S275) polyclonal antibody

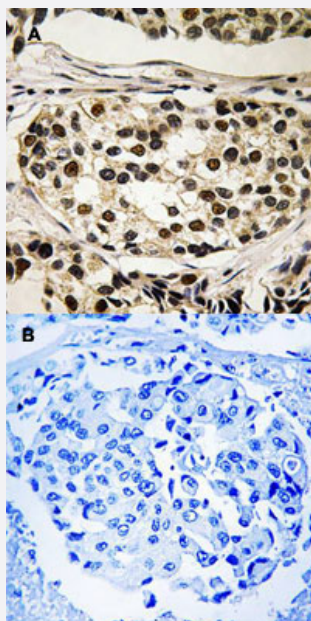
Catalog # PAB29241 Size 100 uL

Applications



Western Blot (Cell lysate)

Western blot analysis of Lane 1: antigen-specific peptide treated 3T3 cells, Lane 2: 3T3 cells, Lane 3: A549 cells, Lane 4: Hela cells with CCNC (phospho S275) polyclonal antibody (Cat # PAB29241) at 1:500-1000 dilution.



Immunohistochemistry (Formalin/PFA-fixed paraffin-embedded sections)

Immunohistochemical staining of human breast carcinoma tissue by CCNC (phospho S275) polyclonal antibody (Cat # PAB29241) without blocking peptide (A) or preincubated with blocking peptide (B) under 1:50-1:100 dilution.

Specification

Product Description

Rabbit polyclonal antibody raised against synthetic phosphopeptide of human CCNC.

Immunogen

Synthetic phosphopeptide (conjugated with KLH) corresponding to residues surrounding S275 of human CCNC.

Host	Rabbit
Theoretical MW (kDa)	37
Reactivity	Human, Mouse, Rat
Specificity	This antibody detects endogenous levels of CCNC only when phosphorylated at serine 275.
Form	Liquid
Purification	Affinity purification
Recommend Usage	Immunohistochemistry (1:50-1:100) Western Blot (1:500-1000) The optimal working dilution should be determined by the end user.
Storage Buffer	In PBS, pH 7.4 (without Mg ²⁺ and Ca ²⁺), (50% glycerol, 0.02% sodium azide)
Storage Instruction	Store at -20°C. Avoid repeated freezing and thawing.

Applications

- Western Blot (Cell lysate)

Western blot analysis of Lane 1: antigen-specific peptide treated 3T3 cells, Lane 2: 3T3 cells, Lane 3: A549 cells, Lane 4: HeLa cells with CCNC (phospho S275) polyclonal antibody (Cat # PAB29241) at 1:500-1000 dilution.

- Immunohistochemistry (Formalin/PFA-fixed paraffin-embedded sections)

Immunohistochemical staining of human breast carcinoma tissue by CCNC (phospho S275) polyclonal antibody (Cat # PAB29241) without blocking peptide (A) or preincubated with blocking peptide (B) under 1:50-1:100 dilution.

Gene Info — CCNC

Entrez GeneID	892
Protein Accession#	P24863
Gene Name	CCNC
Gene Alias	CycC
Gene Description	cyclin C
Omim ID	123838

Gene Ontology[Hyperlink](#)**Gene Summary**

The protein encoded by this gene is a member of the cyclin family of proteins. The encoded protein interacts with cyclin-dependent kinase 8 and induces the phosphorylation of the carboxy-terminal domain of the large subunit of RNA polymerase II. The level of mRNAs for this gene peaks in the G1 phase of the cell cycle. Two transcript variants encoding different isoforms have been found for this gene. [provided by RefSeq]

Other Designations

OTTHUMP00000016897