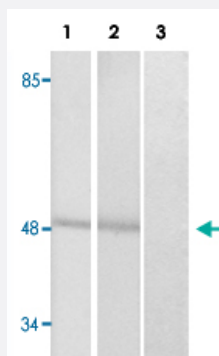


CTBP1 (phospho S422) polyclonal antibody

Catalog # PAB29240

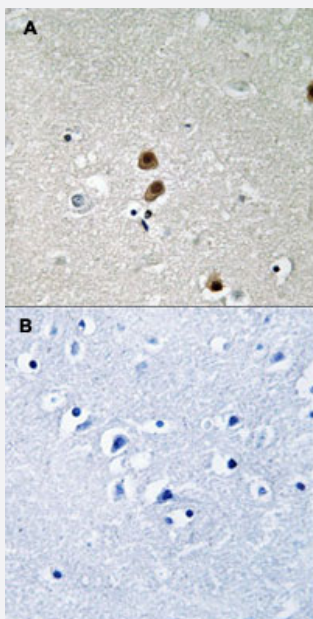
Size 100 uL

Applications



Western Blot (Cell lysate)

Western blot analysis of Lane 1: TNF treated Jurkat cells, Lane 2: antigen-specific peptide treated Jurkat cells with CTBP1 (phospho S422) polyclonal antibody (Cat # PAB29240) at 1:500-1000 dilution.



Immunohistochemistry (Formalin/PFA-fixed paraffin-embedded sections)

Immunohistochemical staining of human brain tissue by CTBP1 (phospho S422) polyclonal antibody (Cat # PAB29240) without blocking peptide (A) or preincubated with blocking peptide (B) under 1:50-1:100 dilution.

Specification

Product Description

Rabbit polyclonal antibody raised against synthetic phosphopeptide of human CTBP1.

Immunogen

Synthetic phosphopeptide (conjugated with KLH) corresponding to residues surrounding S422 of human CTBP1.

Host	Rabbit
Theoretical MW (kDa)	48
Reactivity	Human, Mouse, Rat
Specificity	This antibody detects endogenous levels of CTBP1 only when phosphorylated at serine 422.
Form	Liquid
Purification	Affinity purification
Recommend Usage	Immunohistochemistry (1:50-1:100) Western Blot (1:500-1000) The optimal working dilution should be determined by the end user.
Storage Buffer	In PBS, pH 7.4 (without Mg ²⁺ and Ca ²⁺), (50% glycerol, 0.02% sodium azide)
Storage Instruction	Store at -20°C. Avoid repeated freezing and thawing.

Applications

- Western Blot (Cell lysate)

Western blot analysis of Lane 1: TNF treated Jurkat cells, Lane 2: antigen-specific peptide treated Jurkat cells with CTBP1 (phospho S422) polyclonal antibody (Cat # PAB29240) at 1:500-1000 dilution.

- Immunohistochemistry (Formalin/PFA-fixed paraffin-embedded sections)

Immunohistochemical staining of human brain tissue by CTBP1 (phospho S422) polyclonal antibody (Cat # PAB29240) without blocking peptide (A) or preincubated with blocking peptide (B) under 1:50-1:100 dilution.

Gene Info — CTBP1

Entrez GeneID	1487
Protein Accession#	Q13363
Gene Name	CTBP1
Gene Alias	BARS, MGC104684
Gene Description	C-terminal binding protein 1
Omim ID	602618

Gene Ontology

[Hyperlink](#)

Gene Summary

This gene encodes a protein that binds to the C-terminus of adenovirus E1A proteins. This phosphoprotein is a transcriptional repressor and may play a role during cellular proliferation. This protein and the product of a second closely related gene, CTBP2, can dimerize. Both proteins can also interact with a polycomb group protein complex which participates in regulation of gene expression during development. Alternative splicing of transcripts from this gene results in multiple transcript variants. [provided by RefSeq]

Other Designations

brefeldin A-ribosylated substrate

Pathway

- [Chronic myeloid leukemia](#)
- [Notch signaling pathway](#)
- [Pathways in cancer](#)
- [Wnt signaling pathway](#)

Disease

- [Cerebral Hemorrhage](#)
- [Genetic Predisposition to Disease](#)
- [Hypertension](#)
- [Intracranial Hemorrhages](#)
- [Stroke](#)
- [Subarachnoid Hemorrhage](#)