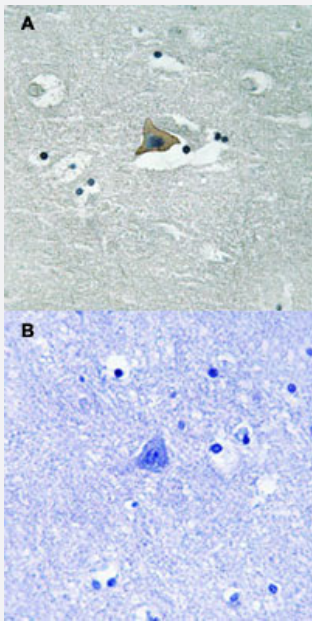


CLDN5 (phospho Y217) polyclonal antibody

Catalog # PAB29238 Size 100 uL

Applications



Immunohistochemistry (Formalin/PFA-fixed paraffin-embedded sections)

Immunohistochemical staining of human brain tissue by CLDN5 (phospho Y217) polyclonal antibody (Cat # PAB29238) without blocking peptide (A) or preincubated with blocking peptide (B) under 1:50-1:100 dilution.

Specification

Product Description	Rabbit polyclonal antibody raised against synthetic phosphopeptide of human CLDN5.
Immunogen	Synthetic phosphopeptide (conjugated with KLH) corresponding to residues surrounding Y217 of human CLDN5.
Host	Rabbit
Theoretical MW (kDa)	23
Reactivity	Human, Mouse, Rat
Specificity	This antibody detects endogenous levels of CLDN5 only when phosphorylated at tyrosine 217.
Form	Liquid

Purification	Affinity purification
Recommend Usage	Immunohistochemistry (1:50-1:100) The optimal working dilution should be determined by the end user.
Storage Buffer	In PBS, pH 7.4 (without Mg ²⁺ and Ca ²⁺), (50% glycerol, 0.02% sodium azide)
Storage Instruction	Store at -20°C. Avoid repeated freezing and thawing.

Applications

- Immunohistochemistry (Formalin/PFA-fixed paraffin-embedded sections)

Immunohistochemical staining of human brain tissue by CLDN5 (phospho Y217) polyclonal antibody (Cat # PAB29238) without blocking peptide (A) or preincubated with blocking peptide (B) under 1:50-1:100 dilution.

Gene Info — CLDN5

Entrez GeneID	7122
Protein Accession#	O00501
Gene Name	CLDN5
Gene Alias	AWAL, BEC1, CPETRL1, TMVCF
Gene Description	claudin 5
Omim ID	602101
Gene Ontology	Hyperlink
Gene Summary	This gene encodes a member of the claudin family. Claudins are integral membrane proteins and components of tight junction strands. Tight junction strands serve as a physical barrier to prevent solutes and water from passing freely through the paracellular space between epithelial or endothelial cell sheets. Mutations in this gene have been found in patients with velocardiofacial syndrome. Alternatively spliced transcript variants encoding the same protein have been found for this gene. [provided by RefSeq]
Other Designations	androgen withdrawal and apoptosis induced protein RVP1-like transmembrane protein deleted in velocardiofacial syndrome

Pathway

- [Cell adhesion molecules \(CAMs\)](#)
- [Leukocyte transendothelial migration](#)
- [Tight junction](#)

Disease

- [Chromosome Deletion](#)
- [Schizophrenia](#)