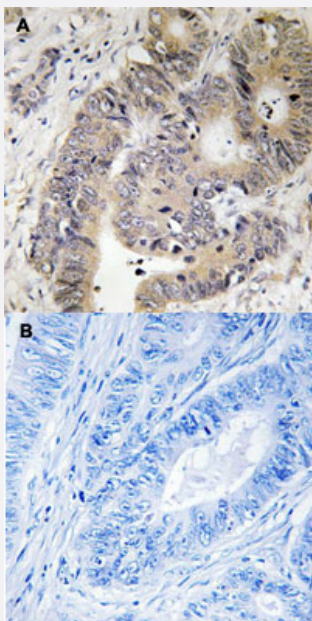


CAD (phospho T456) polyclonal antibody

Catalog # PAB29236 Size 100 uL

Applications



Immunohistochemistry (Formalin/PFA-fixed paraffin-embedded sections)

Immunohistochemical staining of human colon carcinoma tissue by CAD (phospho T456) polyclonal antibody (Cat # PAB29236) without blocking peptide (A) or preincubated with blocking peptide (B) under 1:50-1:100 dilution.

Specification

Product Description	Rabbit polyclonal antibody raised against synthetic phosphopeptide of human CAD.
Immunogen	Synthetic phosphopeptide (conjugated with KLH) corresponding to residues surrounding T456 of human CAD.
Host	Rabbit
Theoretical MW (kDa)	242
Reactivity	Human, Mouse
Specificity	This antibody detects endogenous levels of CAD only when phosphorylated at threonine 456.
Form	Liquid

Purification	Affinity purification
Recommend Usage	Immunohistochemistry (1:50-1:100) The optimal working dilution should be determined by the end user.
Storage Buffer	In PBS, pH 7.4 (without Mg ²⁺ and Ca ²⁺), (50% glycerol, 0.02% sodium azide)
Storage Instruction	Store at -20°C. Avoid repeated freezing and thawing.

Applications

- Immunohistochemistry (Formalin/PFA-fixed paraffin-embedded sections)

Immunohistochemical staining of human colon carcinoma tissue by CAD (phospho T456) polyclonal antibody (Cat # PAB29236) without blocking peptide (A) or preincubated with blocking peptide (B) under 1:50-1:100 dilution.

Gene Info — CAD

Entrez GeneID	790
Protein Accession#	P27708
Gene Name	CAD
Gene Alias	-
Gene Description	carbamoyl-phosphate synthetase 2, aspartate transcarbamylase, and dihydroorotase
Omim ID	114010
Gene Ontology	Hyperlink
Gene Summary	The de novo synthesis of pyrimidine nucleotides is required for mammalian cells to proliferate. This gene encodes a trifunctional protein which is associated with the enzymatic activities of the first 3 enzymes in the 6-step pathway of pyrimidine biosynthesis: carbamoylphosphate synthetase (CPS II), aspartate transcarbamoylase, and dihydroorotase. This protein is regulated by the mitogen-activated protein kinase (MAPK) cascade, which indicates a direct link between activation of the MAPK cascade and de novo biosynthesis of pyrimidine nucleotides. [provided by RefSeq]
Other Designations	CAD trifunctional protein carbamoylphosphate synthetase 2/aspartate transcarbamylase/dihydroorotase multifunctional protein CAD

Pathway

- [Alanine](#)
- [Metabolic pathways](#)
- [Pyrimidine metabolism](#)

Disease

- [Genetic Predisposition to Disease](#)
- [Schizophrenia](#)
- [Tobacco Use Disorder](#)