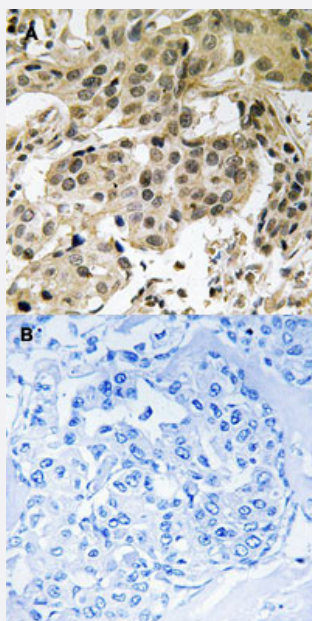


# CBX5 (phospho S92) polyclonal antibody

Catalog # PAB29230

Size 100 uL

## Applications



### Immunohistochemistry (Formalin/PFA-fixed paraffin-embedded sections)

Immunohistochemical staining of human breast carcinoma tissue by CBX5 (phospho S92) polyclonal antibody (Cat # PAB29230) without blocking peptide (A) or preincubated with blocking peptide (B) under 1:50-1:100 dilution.

## Specification

<b>Product Description</b>	Rabbit polyclonal antibody raised against synthetic phosphopeptide of human CBX5.
<b>Immunogen</b>	Synthetic phosphopeptide (conjugated with KLH) corresponding to residues surrounding S92 of human CBX5.
<b>Host</b>	Rabbit
<b>Theoretical MW (kDa)</b>	22
<b>Reactivity</b>	Human
<b>Specificity</b>	This antibody detects endogenous levels of CBX5 only when phosphorylated at serine 92.
<b>Form</b>	Liquid

Purification	Affinity purification
Recommend Usage	Immunohistochemistry (1:50-1:100) The optimal working dilution should be determined by the end user.
Storage Buffer	In PBS, pH 7.4 (without Mg <sup>2+</sup> and Ca <sup>2+</sup> ), (50% glycerol, 0.02% sodium azide)
Storage Instruction	Store at -20°C. Avoid repeated freezing and thawing.

## Applications

- Immunohistochemistry (Formalin/PFA-fixed paraffin-embedded sections)

Immunohistochemical staining of human breast carcinoma tissue by CBX5 (phospho S92) polyclonal antibody (Cat # PAB29230) without blocking peptide (A) or preincubated with blocking peptide (B) under 1:50-1:100 dilution.

## Gene Info — CBX5

Entrez GeneID	<a href="#">23468</a>
Protein Accession#	<a href="#">P45973</a>
Gene Name	CBX5
Gene Alias	HP1, HP1A
Gene Description	chromobox homolog 5 (HP1 alpha homolog, Drosophila)
Omim ID	<a href="#">604478</a>
Gene Ontology	<a href="#">Hyperlink</a>
Gene Summary	This gene encodes a highly conserved nonhistone protein, which is a member of the heterochromatin protein family. The protein is enriched in the heterochromatin and associated with centromeres. The protein has a single N-terminal chromodomain which can bind to histone proteins via methylated lysine residues, and a C-terminal chromo shadow-domain (CSD) which is responsible for the homodimerization and interaction with a number of chromatin-associated nonhistone proteins. The encoded product is involved in the formation of functional kinetochore through interaction with essential kinetochore proteins. The gene has a pseudogene located on chromosome 3. Multiple alternatively spliced variants, encoding the same protein, have been identified. [provided by RefSeq]
Other Designations	HP1-ALPHA HP1Hs alpha antigen p25 heterochromatin protein 1 homolog alpha heterochromatin protein 1-alpha