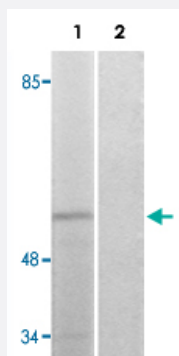


STK39 (phospho S309) polyclonal antibody

Catalog # PAB29220

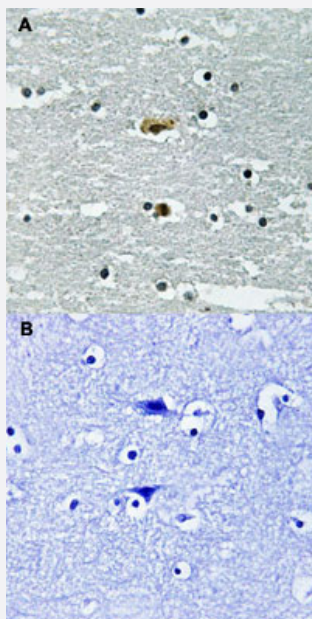
Size 100 uL

Applications



Western Blot (Cell lysate)

Western blot analysis of Lane 1: COLO205 cells Lane 2: antigen-specific peptide treated COLO205 cells with STK39 (phospho S309) polyclonal antibody (Cat # PAB29220).



Immunohistochemistry (Formalin/PFA-fixed paraffin-embedded sections)

Immunohistochemical staining of human brain tissue by STK39 (phospho S309) polyclonal antibody (Cat # PAB29220) without blocking peptide (A) or preincubated with blocking peptide (B).

Specification

Product Description

Rabbit polyclonal antibody raised against synthetic phosphopeptide of human STK39.

Immunogen

Synthetic phosphopeptide (conjugated with KLH) corresponding to residues surrounding S309 of human STK39.

Host	Rabbit
Theoretical MW (kDa)	60
Reactivity	Human, Mouse, Rat
Specificity	This antibody detects endogenous levels of STK39 only when phosphorylated at serine 309.
Form	Liquid
Purification	Affinity purification
Recommend Usage	Immunohistochemistry (1:50-1:100) Western Blot (1:500-1000) The optimal working dilution should be determined by the end user.
Storage Buffer	In PBS, pH 7.4 (without Mg ²⁺ and Ca ²⁺), (50% glycerol, 0.02% sodium azide)
Storage Instruction	Store at -20°C. Avoid repeated freezing and thawing.

Applications

- Western Blot (Cell lysate)

Western blot analysis of Lane 1: COLO205 cells Lane 2: antigen-specific peptide treated COLO205 cells with STK39 (phospho S309) polyclonal antibody (Cat # PAB29220).

- Immunohistochemistry (Formalin/PFA-fixed paraffin-embedded sections)

Immunohistochemical staining of human brain tissue by STK39 (phospho S309) polyclonal antibody (Cat # PAB29220) without blocking peptide (A) or preincubated with blocking peptide (B).

Gene Info — STK39

Entrez GeneID	27347
Protein Accession#	Q9UEW8
Gene Name	STK39
Gene Alias	DCHT, DKFZp686K05124, PASK, SPAK
Gene Description	serine threonine kinase 39 (STE20/SPS1 homolog, yeast)
Omim ID	607648

Gene Ontology

[Hyperlink](#)

Gene Summary

This gene encodes a serine/threonine kinase that is thought to function in the cellular stress response pathway. The kinase is activated in response to hypotonic stress, leading to phosphorylation of several cation-chloride-coupled cotransporters. The catalytically active kinase specifically activates the p38 MAP kinase pathway, and its interaction with p38 decreases upon cellular stress, suggesting that this kinase may serve as an intermediate in the response to cellular stress. [provided by RefSeq]

Other Designations

Ste20-like protein kinase|proline-alanine-rich STE20-related kinase|small intestine SPAK-like kinase

Disease

- [Autistic Disorder](#)
- [Carcinoma](#)
- [Genetic Predisposition to Disease](#)
- [Hypertension](#)
- [Lung Neoplasms](#)
- [Tobacco Use Disorder](#)