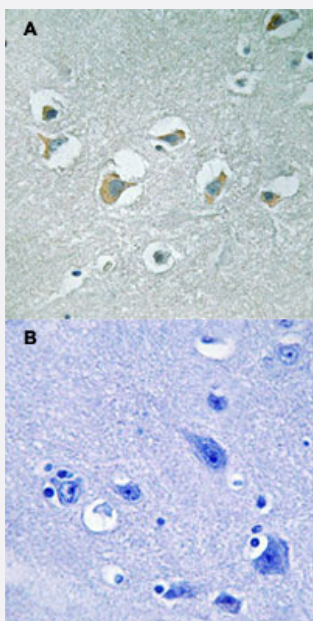


MAP3K9/MAP3K10 (phospho T312/266) polyclonal antibody

Catalog # PAB29212 Size 100 uL

Applications



Immunohistochemistry (Formalin/PFA-fixed paraffin-embedded sections)

Immunohistochemical staining of human brain tissue by MAP3K9/MAP3K10 (phospho T312/266) polyclonal antibody (Cat # PAB29212) without blocking peptide (A) or preincubated with blocking peptide (B) under 1:50-1:100 dilution.

Specification

| | |
|-----------------------------|--|
| Product Description | Rabbit polyclonal antibody raised against synthetic phosphopeptide of human MAP3K9/MAP3K10. |
| Immunogen | Synthetic phosphopeptide (conjugated with KLH) corresponding to residues surrounding T312/266 of human MAP3K9/MAP3K10. |
| Host | Rabbit |
| Theoretical MW (kDa) | 121 |
| Reactivity | Human, Mouse |
| Specificity | This antibody detects endogenous levels of MAP3K9/MAP3K10 only when phosphorylated at threonine 312/266. |
| Form | Liquid |

| | |
|---------------------|---|
| Purification | Affinity purification |
| Recommend Usage | Immunohistochemistry (1:50-1:100) The optimal working dilution should be determined by the end user. |
| Storage Buffer | In PBS, pH 7.4 (without Mg ²⁺ and Ca ²⁺), (50% glycerol, 0.02% sodium azide) |
| Storage Instruction | Store at -20°C. Avoid repeated freezing and thawing. |

Applications

- Immunohistochemistry (Formalin/PFA-fixed paraffin-embedded sections)

Immunohistochemical staining of human brain tissue by MAP3K9/MAP3K10 (phospho T312/266) polyclonal antibody (Cat # PAB29212) without blocking peptide (A) or preincubated with blocking peptide (B) under 1:50-1:100 dilution.

Gene Info — MAP3K9

| | |
|--------------------|--|
| Entrez GeneID | 4293 |
| Protein Accession# | P80192;Q02779 |
| Gene Name | MAP3K9 |
| Gene Alias | MLK1, PRKE1 |
| Gene Description | mitogen-activated protein kinase kinase kinase 9 |
| Omim ID | 600136 |
| Gene Ontology | Hyperlink |
| Other Designations | mixed lineage kinase 1 (tyr and ser/thr specificity) |

Gene Info — MAP3K10

| | |
|--------------------|-------------------------------|
| Entrez GeneID | 4294 |
| Protein Accession# | P80192;Q02779 |
| Gene Name | MAP3K10 |
| Gene Alias | MLK2, MST |

| | |
|--------------------|---|
| Gene Description | mitogen-activated protein kinase kinase kinase 10 |
| Omim ID | 600137 |
| Gene Ontology | Hyperlink |
| Gene Summary | <p>The protein encoded by this gene is a member of the serine/threonine kinase family. This kinase has been shown to activate MAPK8/JNK and MKK4/SEK1, and this kinase itself can be phosphorylated, and thus activated by JNK kinases. This kinase functions preferentially on the JNK signaling pathway, and is reported to be involved in nerve growth factor (NGF) induced neuronal apoptosis. [provided by RefSeq]</p> |
| Other Designations | MKN28 derived nonreceptor_type serine/threonine kinase MKN28 kinase mixed lineage kinase 2 |

Pathway

- [MAPK signaling pathway](#)
- [MAPK signaling pathway](#)

Disease

- [Tobacco Use Disorder](#)