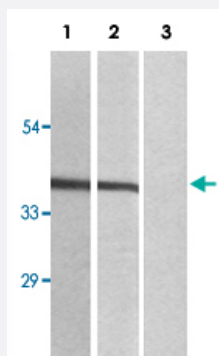


MAP2K7 (phospho S271) polyclonal antibody

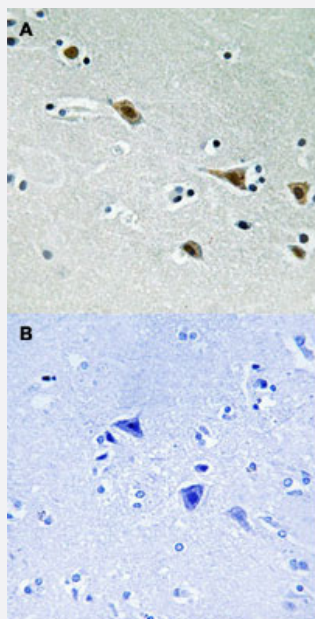
Catalog # PAB29211 Size 100 uL

Applications



Western Blot (Cell lysate)

Western blot analysis of Lane 1: insulin treated 3T3 cells Lane 2: antigen-specific peptide treated 3T3 cells with MAP2K7 (phospho S271) polyclonal antibody (Cat # PAB29211) at 1:500-1000 dilution.



Immunohistochemistry (Formalin/PFA-fixed paraffin-embedded sections)

Immunohistochemical staining of human brain tissue by MAP2K7 (phospho S271) polyclonal antibody (Cat # PAB29211) without blocking peptide (A) or preincubated with blocking peptide (B) under 1:50-1:100 dilution.

Specification

Product Description

Rabbit polyclonal antibody raised against synthetic phosphopeptide of human MAP2K7.

Immunogen

Synthetic phosphopeptide (conjugated with KLH) corresponding to residues surrounding S271 of human MAP2K7.

Host	Rabbit
Theoretical MW (kDa)	60
Reactivity	Human, Mouse, Rat
Specificity	This antibody detects endogenous levels of MAP2K7 only when phosphorylated at serine 271.
Form	Liquid
Purification	Affinity purification
Recommend Usage	Immunohistochemistry (1:50-1:100) Western Blot (1:500-1000) The optimal working dilution should be determined by the end user.
Storage Buffer	In PBS, pH 7.4 (without Mg ²⁺ and Ca ²⁺), (50% glycerol, 0.02% sodium azide)
Storage Instruction	Store at -20°C. Avoid repeated freezing and thawing.

Applications

- Western Blot (Cell lysate)

Western blot analysis of Lane 1: insulin treated 3T3 cells Lane 2: antigen-specific peptide treated 3T3 cells with MAP2K7 (phospho S271) polyclonal antibody (Cat # PAB29211) at 1:500-1000 dilution.

- Immunohistochemistry (Formalin/PFA-fixed paraffin-embedded sections)

Immunohistochemical staining of human brain tissue by MAP2K7 (phospho S271) polyclonal antibody (Cat # PAB29211) without blocking peptide (A) or preincubated with blocking peptide (B) under 1:50-1:100 dilution.

Gene Info — MAP2K7

Entrez GeneID	5609
Protein Accession#	O14733
Gene Name	MAP2K7
Gene Alias	Jnkk2, MAPKK7, MKK7, PRKMK7
Gene Description	mitogen-activated protein kinase kinase 7
Omim ID	603014

Gene Ontology

[Hyperlink](#)

Gene Summary

The protein encoded by this gene is a dual specificity protein kinase that belongs to the MAP kinase family. This kinase specifically activates MAPK8/JNK1 and MAPK9/JNK2, and this kinase itself is phosphorylated and activated by MAP kinase kinases including MAP3K1/MEKK1, MAP3K2/MEKK2, MAP3K3/MEKK5, and MAP4K2/GCK. This kinase is involved in the signal transduction mediating the cell responses to proinflammatory cytokines, and environmental stresses. Multiple alternatively spliced transcript variants encoding distinct isoforms have been found, but only one transcript variant has been supported and defined. [provided by RefSeq]

Other Designations

JNK kinase 2|JNK-activating kinase 2|MAP kinase kinase 7|OTTHUMP00000174397|c-Jun N-terminal kinase kinase 2|dual specificity mitogen-activated protein kinase kinase 7

Pathway

- [ErbB signaling pathway](#)
- [Fc epsilon RI signaling pathway](#)
- [GnRH signaling pathway](#)
- [MAPK signaling pathway](#)
- [Neurotrophin signaling pathway](#)
- [T cell receptor signaling pathway](#)
- [Toll-like receptor signaling pathway](#)