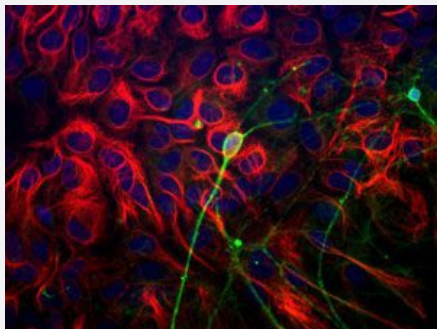


TUBB3 polyclonal antibody

Catalog # PAB29093 Size 300 ug

Applications



TUBB3 polyclonal antibody (Cat # PAB29093) was analyzed by immunocytochemical staining (at a concentration of 3 ug/mL).

Green: TUBB3

Red: GFAP

Blue:DAPI

Specification

Product Description	Chicken polyclonal antibody raised against recombinant Human TUBB3.
Immunogen	Three different KLH-conjugated synthetic peptides corresponding to different regions of the TUBB3 gene product, shared between the human (AAL28094, NCBI) and rat (AAM28438, NCBI) sequences.
Host	Chicken
Reactivity	Human, Rat
Form	Liquid
Purification	Antigen affinity purification
Isotype	IgY
Quality Control Testing	Immunocytochemistry TUBB3 polyclonal antibody (Cat # PAB29093) was analyzed by immunocytochemical staining (at a concentration of 3 ug/mL). Green: TUBB3 Red: GFAP Blue:DAPI

Recommend Usage	Immunocytochemistry(1:1000-1:2000) Immunohistochemistry(1:1000-1:2000) Western Blot(1:2000-1:5000) The optimal working dilution should be determined by the end user.
Storage Buffer	In PBS, pH 7.2 (0.02% sodium azide)
Storage Instruction	Store at 4°C and avoid from light. Aliquot to avoid repeated freezing and thawing.
Note	This product contains sodium azide: a POISONOUS AND HAZARDOUS SUBSTANCE which should be handled by trained staff only.

Applications

- Western Blot
- Immunohistochemistry
- Immunocytochemistry

Gene Info — TUBB3

Entrez GeneID	10381
Protein Accession#	AAL28094
Gene Name	TUBB3
Gene Alias	MC1R, TUBB4, beta-4
Gene Description	tubulin, beta 3
Omim ID	602661
Gene Ontology	Hyperlink
Gene Summary	O
Other Designations	tubulin, beta, 4

Gene Info — Tubb3

Entrez GeneID	246118
Protein Accession#	AAL28094
Gene Name	Tubb3
Gene Alias	-
Gene Description	tubulin, beta 3
Gene Ontology	Hyperlink
Gene Summary	O
Other Designations	neuron-specific class III beta-tubulin

Pathway

- [Gap junction](#)
- [Pathogenic Escherichia coli infection - EHEC](#)