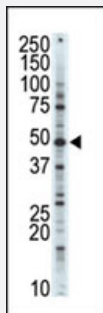


CDK10 polyclonal antibody

Catalog # PAB2909

Size 400 uL

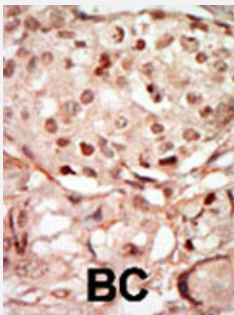
Applications



Western Blot (Cell lysate)

Western blot analysis of CDK10 polyclonal antibody (Cat # PAB2909) in A-375 cell lysate.

CDK10 (arrow) was detected using CDK10 polyclonal antibody. Secondary HRP-anti-rabbit was used for signal visualization with chemiluminescence.



Immunohistochemistry (Formalin/PFA-fixed paraffin-embedded sections)

Formalin-fixed and paraffin-embedded human cancer tissue reacted with CDK10 polyclonal antibody (Cat # PAB2909), which was peroxidase-conjugated to the secondary antibody, followed by DAB staining. This data demonstrates the use of this antibody for immunohistochemistry; clinical relevance has not been evaluated. BC = breast carcinoma.

Specification

Product Description	Rabbit polyclonal antibody raised against synthetic peptide of CDK10.
Immunogen	A synthetic peptide (conjugated with KLH) corresponding to N-terminus of human CDK10.
Host	Rabbit
Reactivity	Human
Form	Liquid
Purification	Protein G purification

Recommend Usage	Western Blot (1:1000) Immunohistochemistry (1:50-100) The optimal working dilution should be determined by the end user.
Storage Buffer	In PBS (0.09% sodium azide)
Storage Instruction	Store at 4°C. For long term storage store at -20°C. Aliquot to avoid repeated freezing and thawing.
Note	This product contains sodium azide: a POISONOUS AND HAZARDOUS SUBSTANCE which should be handled by trained staff only.

Applications

- Western Blot (Cell lysate)

Western blot analysis of CDK10 polyclonal antibody (Cat # PAB2909) in A-375 cell lysate. CDK10 (arrow) was detected using CDK10 polyclonal antibody. Secondary HRP-anti-rabbit was used for signal visualization with chemiluminescence.

- Immunohistochemistry (Formalin/PFA-fixed paraffin-embedded sections)

Formalin-fixed and paraffin-embedded human cancer tissue reacted with CDK10 polyclonal antibody (Cat # PAB2909), which was peroxidase-conjugated to the secondary antibody, followed by DAB staining. This data demonstrates the use of this antibody for immunohistochemistry; clinical relevance has not been evaluated. BC = breast carcinoma.

Gene Info — CDK10

Entrez GeneID	8558
Protein Accession#	Q15131
Gene Name	CDK10
Gene Alias	PISSLRE
Gene Description	cyclin-dependent kinase 10
Omim ID	603464
Gene Ontology	Hyperlink
Gene Summary	The protein encoded by this gene belongs to the CDK subfamily of the Ser/Thr protein kinase family. The CDK subfamily members are highly similar to the gene products of <i>S. cerevisiae</i> cdc28, and <i>S. pombe</i> cdc2, and are known to be essential for cell cycle progression. This kinase has been shown to play a role in cellular proliferation and its function is limited to cell cycle G2-M phase. Multiple transcript variants encoding different isoforms have been found for this gene. [provided by RefSeq]

Other Designations

CDC2-related protein kinase|cell division protein kinase 10|cyclin-dependent kinase (CDC2-like)
10|cyclin-dependent kinase related protein|serine/threonine protein kinase PISLRE

Publication Reference

- [Cyclin-dependent kinases: engines, clocks, and microprocessors.](#)

Morgan DO.

Annual Review of Cell and Developmental Biology 1997 Jan; 13:261.