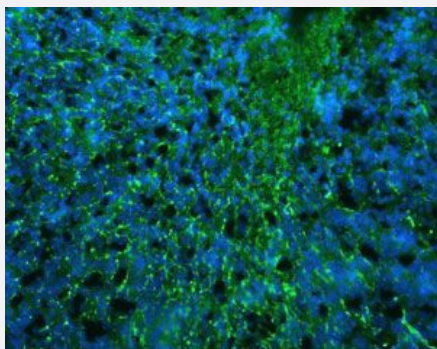


PLP1 polyclonal antibody

Catalog # PAB29088 Size 100 ug

Applications



PLP1 polyclonal antibody (Cat # PAB29088) was analyzed by immunocytochemical staining (at a dilution of 1:2000). In this tissue section through an e13 mouse brain, PLP1 (green) can be seen in immature oligodendrocytes of white matter tracts. DAPI (blue staining) allows visualization of nuclei.

Specification

Product Description	Chicken polyclonal antibody raised against recombinant Human PLP1.
Immunogen	A KLH-conjugated synthetic peptide corresponding to human and mouse PLP1.(NP_000524, NP_955772, P60202)
Host	Chicken
Reactivity	Human, Mouse
Form	Liquid
Purification	Antigen affinity purification
Isotype	IgY
Quality Control Testing	Immunocytochemistry PLP1 polyclonal antibody (Cat # PAB29088) was analyzed by immunocytochemical staining (at a dilution of 1:2000). In this tissue section through an e13 mouse brain, PLP1 (green) can be seen in immature oligodendrocytes of white matter tracts. DAPI (blue staining) allows visualization of nuclei.
Recommend Usage	Immunocytochemistry(1:1000-1:2000) Immunohistochemistry(1:1000-1:2000) The optimal working dilution should be determined by the end user.

Storage Buffer	In PBS, pH 7.2 (0.02% sodium azide)
Storage Instruction	Store at 4°C and avoid from light. For long term storage, dilute the antibody with sterile glycerol and store it at -20°C. Aliquot to avoid repeated freezing and thawing.
Note	This product contains sodium azide: a POISONOUS AND HAZARDOUS SUBSTANCE which should be handled by trained staff only.

Applications

- Immunohistochemistry
- Immunocytochemistry

Gene Info — PLP1

Entrez GeneID	5354
Protein Accession#	NP_000524
Gene Name	PLP1
Gene Alias	HLD1, MMPL, PLP, PLP/DM20, PMD, SPG2
Gene Description	proteolipid protein 1
Omim ID	300401 312080 312920
Gene Ontology	Hyperlink
Gene Summary	This gene encodes a transmembrane proteolipid protein that is the predominant myelin protein present in the central nervous system. It may play a role in the compaction, stabilization, and maintenance of myelin sheaths, as well as in oligodendrocyte development and axonal survival. Mutations in this gene cause X-linked Pelizaeus-Merzbacher disease and spastic paraplegia type 2. Alternatively spliced transcript variants encoding distinct isoforms or having different 5' UTRs, have been identified for this gene. [provided by RefSeq]
Other Designations	OTTHUMP00000023761 OTTHUMP00000023762 lipophilin major myelin proteolipid protein

Gene Info — Plp1

Entrez GeneID	18823
----------------------	-----------------------

Protein Accession#	NP_000524
Gene Name	Plp1
Gene Alias	DM20, Plp, jimpy, jp, msd, rsh
Gene Description	proteolipid protein (myelin) 1
Gene Ontology	Hyperlink
Other Designations	OTTMUSP00000017800 myelin proteolipid protein myelin synthesis deficiency proteolipid protein 1 rump shaker

Disease

- [Disease Progression](#)
- [Genetic Predisposition to Disease](#)
- [Hereditary Central Nervous System Demyelinating Diseases](#)
- [Multiple Sclerosis](#)
- [Spastic Paraplegia](#)