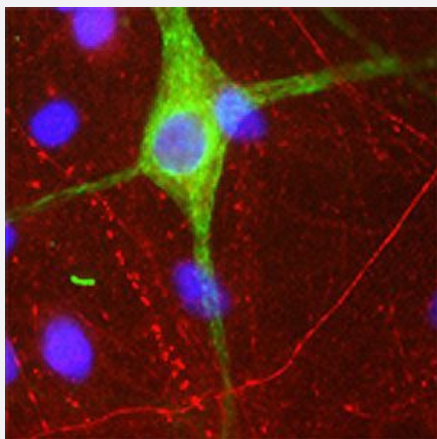


Prph polyclonal antibody

Catalog # PAB29087 Size 200 uL

Applications



Prph polyclonal antibody (Cat # PAB29087) was analyzed by immunocytochemical staining (at a dilution of 1:5000). Positively stained axons (red) in cortical cultures from neonatal mice.

Specification

Product Description	Chicken polyclonal antibody raised against recombinant Rat Prph.
Immunogen	Recombinant full-length rat Prph protein (57 kDa).
Host	Chicken
Reactivity	Rat
Form	Liquid
Purification	IgY Fraction
Isotype	IgY
Quality Control Testing	Immunocytochemistry Prph polyclonal antibody (Cat # PAB29087) was analyzed by immunocytochemical staining (at a dilution of 1:5000). Positively stained axons (red) in cortical cultures from neonatal mice.

Recommend Usage	Immunocytochemistry(1:2000-1:5000) Immunohistochemistry(1:2000-1:5000) Western Blot(1:5000-1:10000) The optimal working dilution should be determined by the end user.
Storage Buffer	In PBS, pH 7.2 (0.02% sodium azide)
Storage Instruction	Store at 4°C and avoid from light. For long term storage, dilute the antibody with sterile glycerol and store it at -20°C. Aliquot to avoid repeated freezing and thawing.
Note	This product contains sodium azide: a POISONOUS AND HAZARDOUS SUBSTANCE which should be handled by trained staff only.

Applications

- Western Blot
- Immunohistochemistry
- Immunocytochemistry

Gene Info — Prph

Entrez GeneID	24688
Gene Name	Prph
Gene Alias	Perf, Prph1
Gene Description	peripherin
Gene Ontology	Hyperlink
Other Designations	peripherin 1