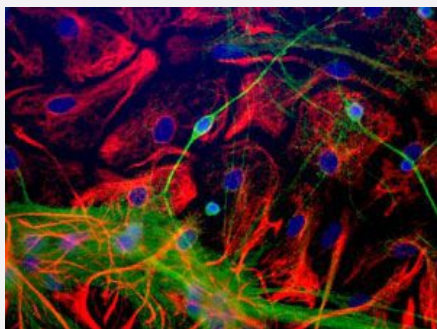


# ENO2 polyclonal antibody

Catalog # PAB29084      Size 200 ug

## Applications



ENO2 polyclonal antibody (Cat # PAB29084) was analyzed by immunocytochemical staining.  
ENO2-positive astrocytes (red).

## Specification

<b>Product Description</b>	Chicken polyclonal antibody raised against recombinant Human ENO2.
<b>Immunogen</b>	Two different KLH-conjugated synthetic peptides corresponding to different regions of the ENO2 gene product, shared between the human (NP_001966, NCBI) and rat (AAA41119, NCBI) sequences.
<b>Host</b>	Chicken
<b>Reactivity</b>	Human, Rat
<b>Form</b>	Liquid
<b>Purification</b>	Antigen affinity purification
<b>Isotype</b>	IgY
<b>Quality Control Testing</b>	Immunocytochemistry ENO2 polyclonal antibody (Cat # PAB29084) was analyzed by immunocytochemical staining. ENO2-positive astrocytes (red).
<b>Recommend Usage</b>	Immunocytochemistry(1:2000-1:5000) Immunohistochemistry(1:2000-1:5000) Western Blot(1:5000-1:10000) The optimal working dilution should be determined by the end user.
<b>Storage Buffer</b>	In PBS, pH 7.2 (0.02% sodium azide)

**Storage Instruction**

Store at 4°C and avoid from light.  
Aliquot to avoid repeated freezing and thawing.

**Note**

This product contains sodium azide: a POISONOUS AND HAZARDOUS SUBSTANCE which should be handled by trained staff only.

## Applications

- Western Blot
- Immunohistochemistry
- Immunocytochemistry

## Gene Info — ENO2

**Entrez GeneID**[2026](#)**Protein Accession#**[NP\\_001966](#)**Gene Name**

ENO2

**Gene Alias**

NSE

**Gene Description**

enolase 2 (gamma, neuronal)

**Omim ID**[131360](#)**Gene Ontology**[Hyperlink](#)**Gene Summary**

This gene encodes one of the three enolase isoenzymes found in mammals. This isoenzyme, a homodimer, is found in mature neurons and cells of neuronal origin. A switch from alpha enolase to gamma enolase occurs in neural tissue during development in rats and primates. [provided by RefSeq]

**Other Designations**

2-phospho-D-glycerate hydrolyase|enolase 2|neural enolase|neuron specific gamma enolase|neuron-specific enolase

## Gene Info — Eno2

**Entrez GeneID**[24334](#)**Protein Accession#**[NP\\_001966](#)

Gene Name	Eno2
Gene Alias	NSE, RNEN3
Gene Description	enolase 2, gamma, neuronal
Gene Ontology	<a href="#">Hyperlink</a>
Gene Summary	gamma
Other Designations	neuron-specific enolase

## Pathway

- [Biosynthesis of alkaloids derived from histidine and purine](#)
- [Biosynthesis of alkaloids derived from ornithine](#)
- [Biosynthesis of alkaloids derived from shikimate pathway](#)
- [Biosynthesis of alkaloids derived from terpenoid and polyketide](#)
- [Biosynthesis of phenylpropanoids](#)
- [Biosynthesis of plant hormones](#)
- [Biosynthesis of terpenoids and steroids](#)
- [Glycolysis / Gluconeogenesis](#)
- [Metabolic pathways](#)
- [RNA degradation](#)

## Disease

- [Alzheimer disease](#)
- [Cerebral Amyloid Angiopathy](#)
- [Genetic Predisposition to Disease](#)
- [Neuroblastoma](#)
- [Schizophrenia](#)