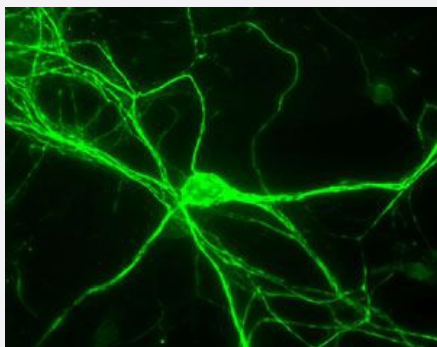


NEFH polyclonal antibody

Catalog # PAB29081 Size 200 uL

Applications



NEFH polyclonal antibody (Cat # PAB29081) was analyzed by immunocytochemical staining (at a dilution of 1:1000). Positively stained cultured neuron (green) from a neonatal mouse brain.

Specification

Product Description	Chicken polyclonal antibody raised against recombinant Bovine NEFH.
Immunogen	Purified NEFH protein (200 kDa) isolated from bovine brains.
Host	Chicken
Reactivity	Bovine, Mouse
Form	Liquid
Purification	IgY Fraction
Isotype	IgY
Quality Control Testing	Immunocytochemistry NEFH polyclonal antibody (Cat # PAB29081) was analyzed by immunocytochemical staining (at a dilution of 1:1000). Positively stained cultured neuron (green) from a neonatal mouse brain.
Recommend Usage	Immunocytochemistry(1:2000-1:5000) Immunohistochemistry(1:2000-1:5000) Western Blot(1:5000-1:10000) The optimal working dilution should be determined by the end user.
Storage Buffer	In PBS, pH 7.2 (0.2% BSA, 0.02% sodium azide)

Storage Instruction

Store at 4°C and avoid from light.
Aliquot to avoid repeated freezing and thawing.

Note

This product contains sodium azide: a POISONOUS AND HAZARDOUS SUBSTANCE which should be handled by trained staff only.

Applications

- Western Blot
- Immunohistochemistry
- Immunocytochemistry

Gene Info — Nefh

Entrez GeneID[380684](#)**Gene Name**

Nefh

Gene Alias

NF-H, NF200, Nfh, mKIAA0845

Gene Description

neurofilament, heavy polypeptide

Gene Ontology[Hyperlink](#)**Gene Summary**

O

Other Designations

OTTMUSP00000005280|neurofilament 200kDa

Gene Info — NEFH

Entrez GeneID[528842](#)**Gene Name**

NEFH

Gene Alias

-

Gene Description

neurofilament, heavy polypeptide

Gene Ontology[Hyperlink](#)**Gene Summary**

neurofilament

Other Designationsneurofilament, heavy polypeptide 200kDa
